

Product datasheet

Recombinant Human LCHN protein ab163522

1 Image

Overview

---

|                       |                                |
|-----------------------|--------------------------------|
| <b>Product name</b>   | Recombinant Human LCHN protein |
| <b>Protein length</b> | Full length protein            |

Description

---

|                            |                                 |
|----------------------------|---------------------------------|
| <b>Nature</b>              | Recombinant                     |
| <b>Source</b>              | Wheat germ                      |
| <b>Amino Acid Sequence</b> |                                 |
| <b>Species</b>             | Human                           |
| <b>Sequence</b>            | NNIYEYHICMLNQVVCREVDITIFTENDFYN |
| <b>Amino acids</b>         | 12 to 43                        |
| <b>Tags</b>                | proprietary tag N-Terminus      |

Specifications

---

Our [Abpromise guarantee](#) covers the use of **ab163522** in the following tested applications.

The application notes include recommended starting dilutions; optimal dilutions/concentrations should be determined by the end user.

|                         |  |
|-------------------------|--|
| <b>Applications</b>     | Western blot<br>ELISA                                  |
| <b>Form</b>             | Liquid   |
| <b>Additional notes</b> | Protein concentration is above or equal to 0.05 mg/ml. |

Preparation and Storage

---

|                              |  |
|------------------------------|--|
| <b>Stability and Storage</b> | Shipped on dry ice. Upon delivery aliquot and store at -80°C. Avoid freeze / thaw cycles.<br>pH: 8.00<br>Constituents: 0.31% Glutathione, 0.79% Tris HCl |
|------------------------------|--|

General Info

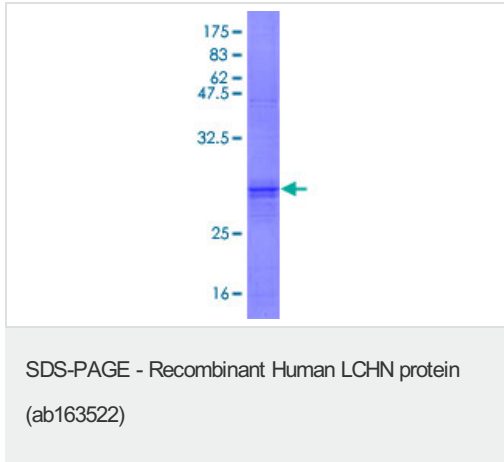
---

|                              |   |
|------------------------------|---|
| <b>Function</b>              | May play a role in neuritogenesis, as well as in neuronal recovery and/or restructuring in the hippocampus following transient cerebral ischemia. |
| <b>Sequence similarities</b> | Belongs to the LCHN family.   |

---

## Images

---



ab163522 on a 12.5% SDS-PAGE stained with Coomassie Blue.

**Please note:** All products are "FOR RESEARCH USE ONLY AND ARE NOT INTENDED FOR DIAGNOSTIC OR THERAPEUTIC USE"

## Our Abpromise to you: Quality guaranteed and expert technical support

---

- Replacement or refund for products not performing as stated on the datasheet
- Valid for 12 months from date of delivery
- Response to your inquiry within 24 hours
- We provide support in Chinese, English, French, German, Japanese and Spanish
- Extensive multi-media technical resources to help you
- We investigate all quality concerns to ensure our products perform to the highest standards

If the product does not perform as described on this datasheet, we will offer a refund or replacement. For full details of the Abpromise, please visit <https://www.abcam.com/abpromise> or contact our technical team.

## Terms and conditions

---

- Guarantee only valid for products bought direct from Abcam or one of our authorized distributors