

Product datasheet

Recombinant Human LHPP protein ab116175

1 References 1 Image

Description

<b>Product name</b>	Recombinant Human LHPP protein
<b>Purity</b>	> 90 % SDS-PAGE. ab116175 was purified using conventional chromatography.
<b>Expression system</b>	Escherichia coli
<b>Accession</b>	<a href="#">Q9H008</a>
<b>Protein length</b>	Full length protein
<b>Animal free</b>	No
<b>Nature</b>	Recombinant
<b>Species</b>	Human
<b>Sequence</b>	<pre> MRGSHHHHP WYASMTGGQQ MGRDLYDDDD KDRWGSHMAP WGKRLAGVRG VLLDISGVLY DSGAGGGTAI AGSVEAVARL KRSRLKVRFC TNESQKSRAE LVGQLQRLGF DISEQEV TAP APAACQILKE QGLRPYLLIH DGVRSEFDQI DTSNPNCVVI ADAGESFSYQ NMNNAFQVLM ELEKPV LISL GKG RYYKETS GLMLDVGPYM KALEYACGIK AEVVGKPSPE FFKSALQAIG VEAHQAVMIG DDIVGDV GGA QRCGMRALQV RTGKFRPSDE HHPEVKADGY VDNLAEAVDL LLQHADK </pre>
<b>Predicted molecular weight</b>	34 kDa including tags
<b>Amino acids</b>	1 to 270
<b>Tags</b>	His tag N-Terminus , DDDDK tag N-Terminus

Specifications

Our [Abpromise guarantee](#) covers the use of **ab116175** in the following tested applications.

The application notes include recommended starting dilutions; optimal dilutions/concentrations should be determined by the end user.

<b>Applications</b>	SDS-PAGE Mass Spectrometry
<b>Mass spectrometry</b>	MALDI-TOF
<b>Form</b>	Liquid

## Preparation and Storage

---

### Stability and Storage

Shipped at 4°C. Store at +4°C short term (1-2 weeks). Upon delivery aliquot. Store at -20°C or -80°C. Avoid freeze / thaw cycle.

pH: 8.00

Constituents: 0.02% DTT, 0.32% Tris HCl, 10% Glycerol (glycerin, glycerine), 0.58% Sodium chloride

## General Info

---

### Tissue specificity

Expressed in liver, kidney and moderately in brain.

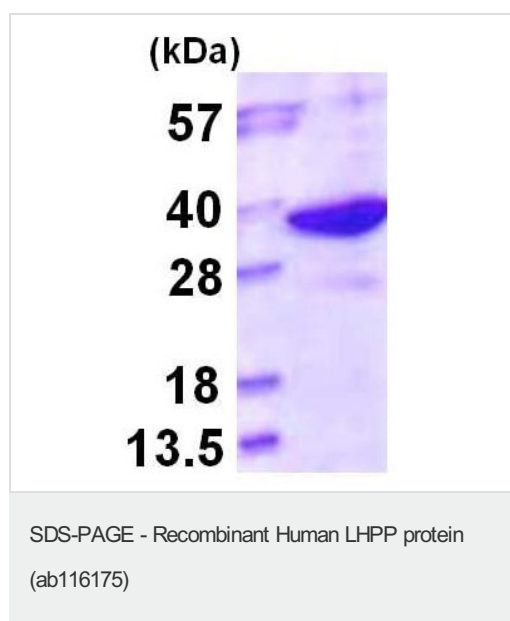
### Sequence similarities

Belongs to the HAD-like hydrolase superfamily.

---

## Images

---



ab116175 on a 15% SDS-PAGE (3ug)

**Please note:** All products are "FOR RESEARCH USE ONLY. NOT FOR USE IN DIAGNOSTIC PROCEDURES"

## Our Abpromise to you: Quality guaranteed and expert technical support

---

- Replacement or refund for products not performing as stated on the datasheet
- Valid for 12 months from date of delivery
- Response to your inquiry within 24 hours
- We provide support in Chinese, English, French, German, Japanese and Spanish
- Extensive multi-media technical resources to help you
- We investigate all quality concerns to ensure our products perform to the highest standards

If the product does not perform as described on this datasheet, we will offer a refund or replacement. For full details of the Abpromise, please visit <https://www.abcam.com/abpromise> or contact our technical team.

## Terms and conditions

---

- Guarantee only valid for products bought direct from Abcam or one of our authorized distributors