

Product datasheet

Recombinant Human LLGL2 protein ab158822

1 Image

Overview

Product name	Recombinant Human LLGL2 protein
Protein length	Full length protein

Description

Nature	Recombinant
Source	Wheat germ
Amino Acid Sequence	
Species	Human

Sequence	<p>MRRFLRPGHDPVRRERLKRDLFQFNKTVEHGFPHQPS ALGYSPSLRILAIG TRSGAIKLYGAPGVVEFMGLHQENNAVTQIHLLPGQCQL VTLLDDNSLHLW SLKVKGGASELQEDESFTLRGPPGAAPSATQITVVLP HSCCELLYLGTES GNVFVVQLPAFRALEDRTISSDAVLQRLPEEARHRRV FEMVEALQEHPRD PNQILIGYSRGLVVIWDLQGSRLVYHFLSSQQLENWW QRDGRLLVSCHS DGSYCQWPVSSEAQQPEPLRSLVPYGPFPCKAITRIL WLTRQQLPFTIF QGGMPRASYGDRHCISVIHDGQQTAFDFTSRVIGFTVL TEADPAATFDDP YALVVLAEEELVVIDLQTAGWPPVQLPYLASLHCSAIT CSHHVSNIPLKL WERIAAGSRQNAHFSTMEWPIDGGTSLTPAPPQRDLL LTGHEDGTVRFW DASGVCLRLLYKLSTVRVFLTDTPNENLSAQGEDEW PPLRKVGSFDPYS DDPRLGIQKIFLCKYSGYLAVAGTAGQVLVLELNDEAA EQAVEQVEADLL QDQEGYRWKGHERLAARSGPVRFEPGFQPFVVLVQC QPPAVVTSLALHSEW RLVAFGTSHGFGLFDHQRRQVFVKCTLHPSDQLALE GPLSRVKSLKKS</p>
-----------------	--

RQSFRRMRRSRVSSRKRHPAGPPGEAQEGSAKAER
PGLQNMELAPVQRKI
EARSAEDSFTGFVRTLYFADTYLKDSSRHCPSLWAGT
NGGTIYAFSLRVP
PAERRMDESVRAEQAKEIQLMHRAPVVGILVLDGHSV
PLPEPLEVAHDLS
KSPDMQGS HQLLV VSEEQFKVFTLPKVS AKLKLK LTA
LEGSRVRRVSVAH
FGSRAEDYGEHHLAVLTNLGDIQVVS LPLLKPQVRY S
CIRREDVSGIAS
CVFTKYGQGFYLISPSEFERFSLSTKWLVEPRCLVDSA
ETKNHRPGNGAG
PKKAPSRARNSGTQSDGEEKQPGLVMERALLSDERV
LKEIQSTLEGDRGS GNWRSHRAAVGCSLSNGGAE

Amino acids 1 to 1020
Tags GST tag N-Terminus

Specifications

Our [Abpromise guarantee](#) covers the use of **ab158822** in the following tested applications.

The application notes include recommended starting dilutions; optimal dilutions/concentrations should be determined by the end user.

Applications Western blot
ELISA
Form Liquid
Additional notes Protein concentration is above or equal to 0.05 mg/ml.

Preparation and Storage

Stability and Storage Shipped on dry ice. Upon delivery aliquot and store at -80°C. Avoid freeze / thaw cycles.
pH: 8.00
Constituents: 0.31% Glutathione, 0.79% Tris HCl

General Info

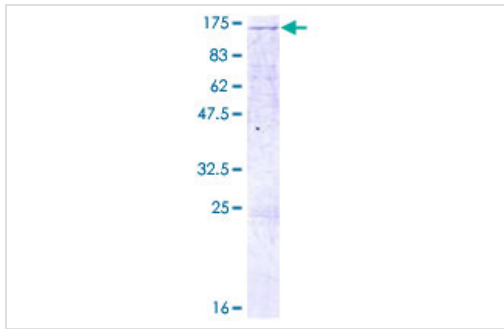
Function Part of a complex with GPSM2/LGN, PRKCI/aPKC and PARD6B/Par-6, which may ensure the correct organization and orientation of bipolar spindles for normal cell division. This complex plays roles in the initial phase of the establishment of epithelial cell polarity.

Sequence similarities Belongs to the WD repeat L(2)GL family.
Contains 14 WD repeats.

Post-translational modifications Phosphorylated at Ser-653 by PRKCI. Phosphorylation is enhanced during cell polarization induced by calcium. Phosphorylation may occur during the cell-cell contact-induced cell polarization and may contribute to the segregation of LLLGL2 from the PRKCI/aPKC and PARD6B/Par-6 complex.

Cellular localization Cytoplasm. Localized in the perinuclear structure and faintly at the cell-cell contacts sites in the interphase. Localized at the cell periphery during metaphase. Cortical localization in mitotic cells. Found in the lateral region of polarized epithelial cells.

Images



ab158822 on a 12.5% SDS-PAGE stained with Coomassie Blue.

SDS-PAGE - Recombinant Human LLGL2 protein
(ab158822)

Please note: All products are "FOR RESEARCH USE ONLY AND ARE NOT INTENDED FOR DIAGNOSTIC OR THERAPEUTIC USE"

Our Abpromise to you: Quality guaranteed and expert technical support

- Replacement or refund for products not performing as stated on the datasheet
- Valid for 12 months from date of delivery
- Response to your inquiry within 24 hours
- We provide support in Chinese, English, French, German, Japanese and Spanish
- Extensive multi-media technical resources to help you
- We investigate all quality concerns to ensure our products perform to the highest standards

If the product does not perform as described on this datasheet, we will offer a refund or replacement. For full details of the Abpromise, please visit <https://www.abcam.com/abpromise> or contact our technical team.

Terms and conditions

- Guarantee only valid for products bought direct from Abcam or one of our authorized distributors