

Product datasheet

Recombinant Human LMAN2L protein ab164339

1 Image

Description

Product name	Recombinant Human LMAN2L protein
Expression system	Wheat germ
Protein length	Full length protein
Animal free	No
Nature	Recombinant
Species	Human
Sequence	<p>MAATLGPLGSWQQWRRCLSARDGSRMLLLLLLLGSGQG PQQVGAGQTFEY LKREHLSKPYQGVGTGSSSLWNLMGNAMVMTQYIRLTP DMQSKQGALWN RVPCFLRDWELQVHFVKIHGQGKKNLHGDGLAWYTKDRM QPGPVFGNMDK FVGLGVFVDTPNEEKQQERVFPYISAMVNNGSLSYDHE RDGRPTELGGC TAMRNLHYDTFLVIRYVKRHLLTIMMDIDGKHEWRDCIEVPG VRLPRGYY FGTSSITGDLSDNHDVISLKLFEFTVERTPEEEKLHRDVFL PSVDNMKLP EMTAPLPPLSGLALFLVFFSLVFSVFAMIGIILYNKWQEQS RKRFY</p>
Amino acids	1 to 348
Tags	GST tag N-Terminus

Specifications

Our [Abpromise guarantee](#) covers the use of **ab164339** in the following tested applications.

The application notes include recommended starting dilutions; optimal dilutions/concentrations should be determined by the end user.

Applications	ELISA
	Western blot

Form	Liquid
-------------	--------

Additional notes

Preparation and Storage

Stability and Storage

Shipped on dry ice. Upon delivery aliquot and store at -80°C. Avoid freeze / thaw cycles.

pH: 8.00

Constituents: 0.31% Glutathione, 0.79% Tris HCl

General Info

Function

May be involved in the regulation of export from the endoplasmic reticulum of a subset of glycoproteins. May function as a regulator of ERGIC-53.

Tissue specificity

Expressed in numerous tissues. Highest expression in skeletal muscle and kidney, intermediate levels in heart, liver and placenta, low levels in brain, thymus, spleen, small intestine and lung.

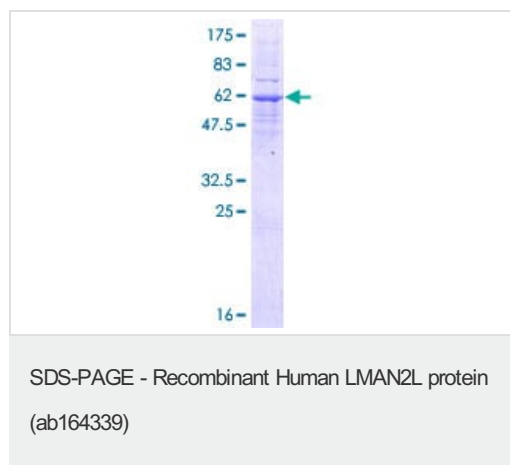
Sequence similarities

Contains 1 L-type lectin-like domain.

Cellular localization

Endoplasmic reticulum membrane. Golgi apparatus membrane. Predominantly found in the endoplasmic reticulum. Partly found in the Golgi.

Images



ab164339 on a 12.5% SDS-PAGE stained with Coomassie Blue.

Please note: All products are "FOR RESEARCH USE ONLY. NOT FOR USE IN DIAGNOSTIC PROCEDURES"

Our Abpromise to you: Quality guaranteed and expert technical support

- Replacement or refund for products not performing as stated on the datasheet
- Valid for 12 months from date of delivery
- Response to your inquiry within 24 hours
- We provide support in Chinese, English, French, German, Japanese and Spanish
- Extensive multi-media technical resources to help you
- We investigate all quality concerns to ensure our products perform to the highest standards

If the product does not perform as described on this datasheet, we will offer a refund or replacement. For full details of the Abpromise,

please visit <https://www.abcam.com/abpromise> or contact our technical team.

Terms and conditions

- Guarantee only valid for products bought direct from Abcam or one of our authorized distributors