

Product datasheet

Recombinant Human LMX1b protein ab132307

1 Image

Overview

<b>Product name</b>	Recombinant Human LMX1b protein
<b>Protein length</b>	Full length protein

Description

<b>Nature</b>	Recombinant
<b>Source</b>	Wheat germ

Amino Acid Sequence

**Accession** [O60663-2](#)

**Species** Human

Sequence

MLDGIKMEEHALRPGPATLGVLLGSDCPHPAVCEGC  
 QRPISDRFLMRVNE  
 SSWHEECLQCAACQQALTTSCYFRDRKLYCKQDYQQ  
 LFAAKCSGCMEKIA  
 PTEFVMRALECVYHLGCFCCVCERQLRKGDEFVLK  
 EGQLLCKGDYEKEK  
 DLLSSVSPDES SVKSEDEDGDMKPAKGQGSQSKG  
 SGDDGKDPRRPKRPR  
 TILTTQRRAFKASFEVSSKPCRKVRETLAAETGLSVR  
 VVQVWFQNQRAK  
 MKKLARRHQQQEQQNSQRLGQEVLSRMEGMMAS  
 YTPLAPPQQQVAME  
 QSPYGSSDPFQQGLTPPQMPGNDSIFHDIDSDTSLTSL  
 SDCFLGSSDVGS LQARVGNPIDRLYSMQSSYFAS

**Molecular weight** 68 kDa including tags

**Amino acids** 1 to 372

Specifications

Our [Abpromise guarantee](#) covers the use of **ab132307** in the following tested applications.

The application notes include recommended starting dilutions; optimal dilutions/concentrations should be determined by the end user.

<b>Applications</b>	ELISA
	SDS-PAGE

Western blot

**Form**

Liquid

**Additional notes**

Protein concentration is above or equal to 0.05 µg/µl.

Best use within three months from the date of receipt of this protein.

**Preparation and Storage**

---

**Stability and Storage**

Shipped on dry ice. Upon delivery aliquot and store at -80°C. Avoid freeze / thaw cycles.

pH: 8.00

Constituents: 0.31% Glutathione, 0.79% Tris HCl

**General Info**

---

**Function**

Essential for the specification of dorsal limb fate at both the zeugopodal and autopodal levels.

**Tissue specificity**

Expressed in most tissues. Highest levels in testis, thyroid, duodenum, skeletal muscle, and pancreatic islets.

**Involvement in disease**

Defects in LMX1B are the cause of nail-patella syndrome (NPS) [MIM:161200]; also known as onychoosteodysplasia. NPS is a disease that cause abnormal skeletal patterning and renal dysplasia.

**Sequence similarities**

Contains 1 homeobox DNA-binding domain.

Contains 2 LIM zinc-binding domains.

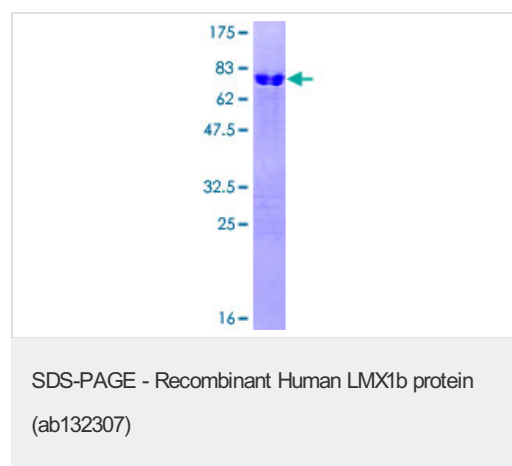
**Cellular localization**

Nucleus.

---

**Images**

---



12.5% SDS-PAGE stained with Coomassie Blue showing ab132307.

**Please note:** All products are "FOR RESEARCH USE ONLY. NOT FOR USE IN DIAGNOSTIC PROCEDURES"

**Our Promise to you: Quality guaranteed and expert technical support**

---

- Replacement or refund for products not performing as stated on the datasheet
- Valid for 12 months from date of delivery

- Response to your inquiry within 24 hours
- We provide support in Chinese, English, French, German, Japanese and Spanish
- Extensive multi-media technical resources to help you
- We investigate all quality concerns to ensure our products perform to the highest standards

If the product does not perform as described on this datasheet, we will offer a refund or replacement. For full details of the Abpromise, please visit <https://www.abcam.com/abpromise> or contact our technical team.

### **Terms and conditions**

---

- Guarantee only valid for products bought direct from Abcam or one of our authorized distributors