

Product datasheet

Recombinant Human LOC134147/CMBL protein
ab130050

1 Image

Overview

Product name	Recombinant Human LOC134147/CMBL protein
Protein length	Full length protein

Description

Nature	Recombinant
Source	Escherichia coli
Amino Acid Sequence	
Accession	Q96DG6
Species	Human
Molecular weight	31 kDa including tags
Amino acids	1 to 245
Tags	His tag N-Terminus

Specifications

Our [Abpromise guarantee](#) covers the use of **ab130050** in the following tested applications.

The application notes include recommended starting dilutions; optimal dilutions/concentrations should be determined by the end user.

Applications	SDS-PAGE Mass Spectrometry
Mass spectrometry	MALDI-TOF
Purity	> 95 % SDS-PAGE. ab130050 was purified using conventional chromatography techniques.
Form	Liquid
Additional notes	This product was previously labelled as LOC134147

Preparation and Storage

Stability and Storage

Shipped at 4°C. Store at +4°C short term (1-2 weeks). Upon delivery aliquot. Store at -20°C or -80°C. Avoid freeze / thaw cycle.

pH: 8.00

Constituents: 0.32% Tris HCl, 0.03% EDTA, 10% Glycerol, 0.58% Sodium chloride

General Info

Function

Cysteine hydrolase. Can convert the prodrug olmesartan medoxomil into its pharmacologically active metabolite olmerstatan, an angiotensin receptor blocker, in liver and intestine. May also activate beta-lactam antibiotics faropenem medoxomil and lenampicillin.

Tissue specificity

Widely expressed, with highest levels in liver, followed by kidney, small intestine and colon. Present in liver and intestine (at protein level).

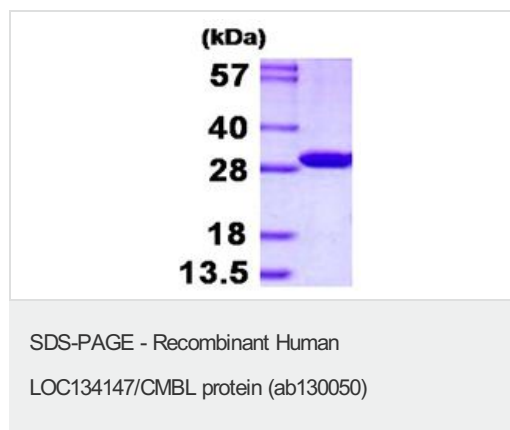
Sequence similarities

Belongs to the dienelactone hydrolase family.

Cellular localization

Cytoplasm > cytosol.

Images



15% SDS-PAGE analysis of 3 µg of Human LOC134147/CMBL protein (ab130050)

Please note: All products are "FOR RESEARCH USE ONLY. NOT FOR USE IN DIAGNOSTIC PROCEDURES"

Our Abpromise to you: Quality guaranteed and expert technical support

- Replacement or refund for products not performing as stated on the datasheet
- Valid for 12 months from date of delivery
- Response to your inquiry within 24 hours
- We provide support in Chinese, English, French, German, Japanese and Spanish
- Extensive multi-media technical resources to help you
- We investigate all quality concerns to ensure our products perform to the highest standards

If the product does not perform as described on this datasheet, we will offer a refund or replacement. For full details of the Abpromise, please visit <https://www.abcam.com/abpromise> or contact our technical team.

Terms and conditions

- Guarantee only valid for products bought direct from Abcam or one of our authorized distributors