

Product datasheet

Recombinant Human LONP1/Lon protein ab160451

1 Image

Overview

Product name	Recombinant Human LONP1/Lon protein
Protein length	Full length protein

Description

Nature	Recombinant
Source	Wheat germ
Amino Acid Sequence	
Species	Human

Sequence	<p>MAASTGYVRLWGAARCWVLRPMLAAAGGRVPTAA GAWLLRGQRTCDASP PWALWGRGPAIGGQWRGFWEASSRGGGAFSGGED ASEGGAEEGAGGAGGS AGAGEGPVITALTPMTIPDVFPHLPLIAITRNPVFRFIKII EVKNKKLV ELLRRKVRLAQPYVGVFLKRDDSNEVDVVEVSLDEMYHT GTFQAQIHEMQDL GDKLRMVMGHRRVHISRQLEVEPEEPEAENKHKPRR KSKRGKKEAEDEL SARHPAELAMEPTPELPAEVLMEVENNVHEDFQVT EEVKALTAIVKTI RDIALNPLYRESVLQMMQAGQRVVDNPMYSDMGAAL TGAESHELQDVL EETNIPKRLYKALSLLKKEFELSKLQQRLGREVEEKIKQ THRKYLLQEQL KIIKKELGLEKDDKDAIEEKFRERLKELVVPKHVMDVV DEELSKLGLLDN HSSEFNVTRNYLDWLTSIPWGKYSNENLDLARAQAVL EEDHYGMEDVKKR ILEFIAVSQLRGSTQGKILCFYGGPGVGKTSIARSIARAL NREYFRFSVG GMTDVAEIKGHRRTYVGAMPGKIIQCLKKTENPLILID EVDKIGRGYQ GDPSSALLELLDPEQANFLDHYLDVPVDLSKVLFICT ANVTDTIPEPLR</p>
-----------------	---

DRMEMINVSGYVAQEKLAIERYLVPQARALCGLDES
KAKLSSDVLTLI
KQYCRESGVRNLQKQVEKVLRSAYKIVSGEAESEV
TPENLQDFVGKPV
FTVERMYDVTPPGVVMGLAWTAMGGSTLFFVETSLRR
PQDKDAKGDKDGS
EVTGQLGEVMKESARIYTFARAFLMQHAPANDYLVT
SHIHLHVPEGATP
KDGPSAGCTVTALLSLAMGRPVRQNLAMTGEVSLTG
KILPVGGIKEKI
AAKRAVTCMLPAENKDFYDLAAAFITEGLEVHFVEH
YREIFDIAFPDE QAEALAVR

Amino acids 1 to 959
Tags GST tag N-Terminus

Specifications

Our [Abpromise guarantee](#) covers the use of **ab160451** in the following tested applications.

The application notes include recommended starting dilutions; optimal dilutions/concentrations should be determined by the end user.

Applications Western blot
ELISA
Form Liquid
Additional notes Protein concentration is above or equal to 0.05 mg/ml.
Protein previously labeled as LONP1.

Preparation and Storage

Stability and Storage Shipped on dry ice. Upon delivery aliquot and store at -80°C. Avoid freeze / thaw cycles.
pH: 8.00
Constituents: 0.31% Glutathione, 0.79% Tris HCl

General Info

Function ATP-dependent serine protease that mediates the selective degradation of misfolded, unassembled or oxidatively damaged polypeptides as well as certain short-lived regulatory proteins in the mitochondrial matrix. May also have a chaperone function in the assembly of inner membrane protein complexes. Participates in the regulation of mitochondrial gene expression and in the maintenance of the integrity of the mitochondrial genome. Binds to mitochondrial promoters and RNA in a single-stranded, site-specific, and strand-specific manner. May regulate mitochondrial DNA replication and/or gene expression using site-specific, single-stranded DNA binding to target the degradation of regulatory proteins binding to adjacent sites in mitochondrial promoters. Endogenous substrates include mitochondrial steroidogenic acute regulatory (StAR) protein.

Tissue specificity Duodenum, heart, lung and liver, but not thymus.

Involvement in disease CODAS syndrome

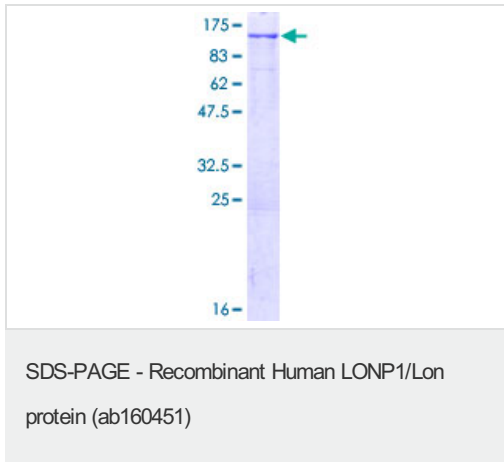
Sequence similarities Belongs to the peptidase S16 family.

Contains 1 Lon domain.

Cellular localization

Mitochondrion matrix.

Images



ab160451 on a 12.5% SDS-PAGE stained with Coomassie Blue.

Please note: All products are "FOR RESEARCH USE ONLY AND ARE NOT INTENDED FOR DIAGNOSTIC OR THERAPEUTIC USE"

Our Abpromise to you: Quality guaranteed and expert technical support

- Replacement or refund for products not performing as stated on the datasheet
- Valid for 12 months from date of delivery
- Response to your inquiry within 24 hours
- We provide support in Chinese, English, French, German, Japanese and Spanish
- Extensive multi-media technical resources to help you
- We investigate all quality concerns to ensure our products perform to the highest standards

If the product does not perform as described on this datasheet, we will offer a refund or replacement. For full details of the Abpromise, please visit <https://www.abcam.com/abpromise> or contact our technical team.

Terms and conditions

- Guarantee only valid for products bought direct from Abcam or one of our authorized distributors