

Product datasheet

Recombinant Human LPGAT1 protein ab160719

1 Image

Overview

Product name	Recombinant Human LPGAT1 protein
Protein length	Full length protein

Description

Nature	Recombinant
Source	Wheat germ
Amino Acid Sequence	
Species	Human
Sequence	<p>MAITLEEAPWLGWLLVKALMRFAFMVNNLVAIPSYIC YVILQPLRVLD SKRFWYIEGIMYKWLLGMVASWGUYAGYTVMEWGEDI KAVSKDEAVMLVN HQATGDVCTLMMCLQDKGLVVAQMMWLMDFHIFKYTN FGIVSLVHGDFIR QGRSYRDQQLLLKKHLENNYRSRDRKWMLFPEGGF LRKRRETSQAFK KNNLPFLTNVTLPRSGATKIILNALVAQQKNGSPAGGD AKELDSKSKGLQ WIIDTTIAYPKAEPIDIQTWILGYRKPTVTHVHYRIFPIKDV PLETDDL TWLYQRFVEKEDLLSHFYETGAFPPSKGHKEAVSREM TLSNLWIFLIQSF AFLSGYMWYNIQYFYHCLF</p>
Amino acids	1 to 370
Tags	GST tag N-Terminus

Specifications

Our [Abpromise guarantee](#) covers the use of **ab160719** in the following tested applications.

The application notes include recommended starting dilutions; optimal dilutions/concentrations should be determined by the end user.

Applications	Western blot
	ELISA
Form	Liquid

Additional notes

Protein concentration is above or equal to 0.05 mg/ml.

Preparation and Storage

Stability and Storage

Shipped on dry ice. Upon delivery aliquot and store at -80°C. Avoid freeze / thaw cycles.

pH: 8.00

Constituents: 0.31% Glutathione, 0.79% Tris HCl

General Info

Function

Lysophosphatidylglycerol (LPG) specific acyltransferase that recognizes various acyl-CoAs and LPGs as substrates but demonstrates a clear preference for long chain saturated fatty acyl-CoAs and oleoyl-CoA as acyl donors. Prefers oleoyl-LPG over palmitoyl-LPG as an acyl receptor and oleoyl-CoA over lauroyl-CoA as an acyl donor.

Tissue specificity

Highly expressed in liver and placenta. Also expressed in peripheral blood, lung, kidney and brain. Detected at lower levels in colon.

Sequence similarities

Belongs to the 1-acyl-sn-glycerol-3-phosphate acyltransferase family.

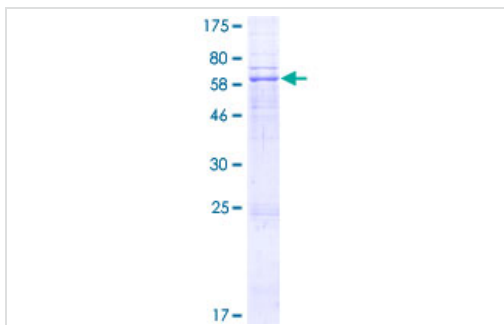
Domain

The HXXXXD motif is essential for acyltransferase activity and may constitute the binding site for the phosphate moiety of the glycerol-3-phosphate.

Cellular localization

Endoplasmic reticulum membrane.

Images



ab160719 on a 12.5% SDS-PAGE stained with Coomassie Blue.

SDS-PAGE - Recombinant Human LPGAT1 protein
(ab160719)

Please note: All products are "FOR RESEARCH USE ONLY. NOT FOR USE IN DIAGNOSTIC PROCEDURES"

Our Abpromise to you: Quality guaranteed and expert technical support

- Replacement or refund for products not performing as stated on the datasheet
- Valid for 12 months from date of delivery
- Response to your inquiry within 24 hours
- We provide support in Chinese, English, French, German, Japanese and Spanish

- Extensive multi-media technical resources to help you
- We investigate all quality concerns to ensure our products perform to the highest standards

If the product does not perform as described on this datasheet, we will offer a refund or replacement. For full details of the Abpromise, please visit <https://www.abcam.com/abpromise> or contact our technical team.

Terms and conditions

- Guarantee only valid for products bought direct from Abcam or one of our authorized distributors