

Product datasheet

Recombinant Human LRCH3 protein ab164674

1 Image

Overview

Product name	Recombinant Human LRCH3 protein
Protein length	Full length protein

Description

Nature	Recombinant
Source	Wheat germ
Amino Acid Sequence	
Species	Human

Sequence	<p> MAAAGLVAVAAAAEYSGTVASGGNLPGVHCGPSSGA GPGFGPGSWSRSLD RALEEAAVTGVLSSLGRKLREFPRGAANHDLTDTTTRA DLSRNRLSEIPIE ACHFVSLLENLNYQNCIRYIPEAILNLQALTFLNISRNQLS TLPVHLCNL PLKVLIASNNKLVSLPEEIGHLRHLMELDVSCNEIQTIPS QIGNLEALRD LNVRRNHLVHLPEELAEPLIRLDFSCNKITTIPVCYRNL RHLQTITLDN NPLQSPPAQICIKGKVHIFKYLNIQACKIAPDLPDYDRRP LGFGSCHEEL YSSRPYGALDSGFNSVDSGDKRWSGNEPTDEFSDLP LRVAEITKEQLRR ESQYQENRGSLVVTNGGVEHDLQIDYDSCTAEEMEE AEVRQPKGPDPS LSSQFMAYIEQRRISHEGSPVKPVAIREFQKTEDMRRY LHQNRVPAEPSS LLSLSASHNQLSHTDLELHQRREQLVERTRREAQLAA LQYEEKIRTKQI QRDAVLDFVKQKASQSPQKQHPLLDGVDGECPPFSR RSQHTDDSAALCMSL SGLNQVGCAATLPHSSAFTPLKSDDRPNALLSSPATE TVHHSPAYSFPAA IQRNQQRPEFSLFRAGVRAETNKGHASPLPPSAAPT TDSTDSITGQNSR </p>
-----------------	---

QREEELELIDQLRKHEYRLKVSLPCDLGAALTDGVVL
CHLANHVRPRSV PSIHVPSPAVVS

Amino acids 1 to 712
Tags GST tag N-Terminus

Specifications

Our [Abpromise guarantee](#) covers the use of **ab164674** in the following tested applications.

The application notes include recommended starting dilutions; optimal dilutions/concentrations should be determined by the end user.

Applications ELISA
Western blot

Form Liquid

Additional notes Protein concentration is above or equal to 0.05 mg/ml.

Preparation and Storage

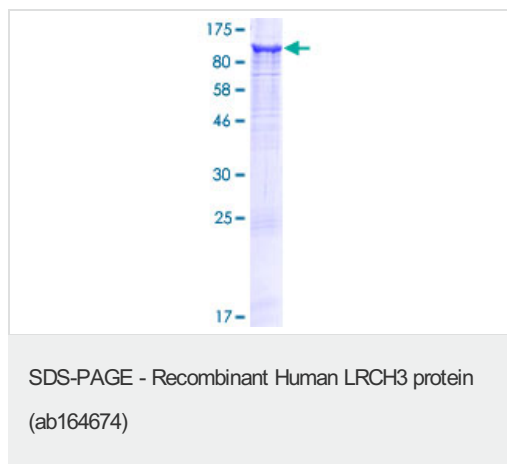
Stability and Storage Shipped on dry ice. Upon delivery aliquot and store at -80°C. Avoid freeze / thaw cycles.
pH: 8.00
Constituents: 0.31% Glutathione, 0.79% Tris HCl

General Info

Sequence similarities Contains 1 CH (calponin-homology) domain.
Contains 9 LRR (leucine-rich) repeats.

Cellular localization Secreted.

Images



ab164674 on a 12.5% SDS-PAGE stained with Coomassie Blue.

Please note: All products are "FOR RESEARCH USE ONLY AND ARE NOT INTENDED FOR DIAGNOSTIC OR THERAPEUTIC USE"

Our Abpromise to you: Quality guaranteed and expert technical support

- Replacement or refund for products not performing as stated on the datasheet
- Valid for 12 months from date of delivery
- Response to your inquiry within 24 hours

- We provide support in Chinese, English, French, German, Japanese and Spanish
- Extensive multi-media technical resources to help you
- We investigate all quality concerns to ensure our products perform to the highest standards

If the product does not perform as described on this datasheet, we will offer a refund or replacement. For full details of the Abpromise, please visit <https://www.abcam.com/abpromise> or contact our technical team.

Terms and conditions

- Guarantee only valid for products bought direct from Abcam or one of our authorized distributors