

Product datasheet

Recombinant Human LRP1 protein ab158828

1 Image

Description

Product name	Recombinant Human LRP1 protein
Expression system	Wheat germ
Accession	Q07954-2
Protein length	Full length protein
Animal free	No
Nature	Recombinant
Species	Human
Sequence	<pre>MLTPLLLLLLPLLSALVAAAIDAPKTCSPKQFACRDQITCIS KGWRC DGE RDCPDGSDEAPEICPQSKAQRCQPNEHNCLGTELCVPM SRLCNGVQDCMD GSDEGPHCRELQGNC SRLGCQHHCVPTLDGPTCYCNSS FQLQADGKTCKD FDECSVYGTC SQLCTNTDGSFICGCV EGYLLQPDNR SCK AKNEPVD RPPV LLIANSQNILATYLSGAQVSTITPTSTRQTTAMDFSYANETV CWVHVGDS AAQTLKCARMPGLKGFVDEHTINISLSLHLCVFSK SQQE MG</pre>
Amino acids	1 to 292
Tags	GST tag N-Terminus
Additional sequence information	This protein is the full length sequence for isoform 2 (UniProt: Q07954-2), which is 292 amino acids. It is not the canonical isoform 1 sequence (4,544 amino acids).

Specifications

Our [Abpromise guarantee](#) covers the use of **ab158828** in the following tested applications.

The application notes include recommended starting dilutions; optimal dilutions/concentrations should be determined by the end user.

Applications	ELISA Western blot
Form	Liquid
Additional notes	

Preparation and Storage

Stability and Storage

Shipped on dry ice. Upon delivery aliquot and store at -80°C. Avoid freeze / thaw cycles.

pH: 8.00

Constituents: 0.31% Glutathione, 0.79% Tris HCl

General Info

Function

Endocytic receptor involved in endocytosis and in phagocytosis of apoptotic cells. Required for early embryonic development. Involved in cellular lipid homeostasis. Involved in the plasma clearance of chylomicron remnants and activated LRPAP1 (alpha 2-macroglobulin), as well as the local metabolism of complexes between plasminogen activators and their endogenous inhibitors. May modulate cellular events, such as APP metabolism, kinase-dependent intracellular signaling, neuronal calcium signaling as well as neurotransmission.

Functions as a receptor for *Pseudomonas aeruginosa* exotoxin A.

Tissue specificity

Most abundant in liver, brain and lung.

Sequence similarities

Belongs to the LDLR family.

Contains 22 EGF-like domains.

Contains 31 LDL-receptor class A domains.

Contains 34 LDL-receptor class B repeats.

Post-translational modifications

Cleaved into a 85 kDa membrane-spanning subunit (LRP-85) and a 515 kDa large extracellular domain (LRP-515) that remains non-covalently associated. Gamma-secretase-dependent cleavage of LRP-85 releases the intracellular domain from the membrane.

The N-terminus is blocked.

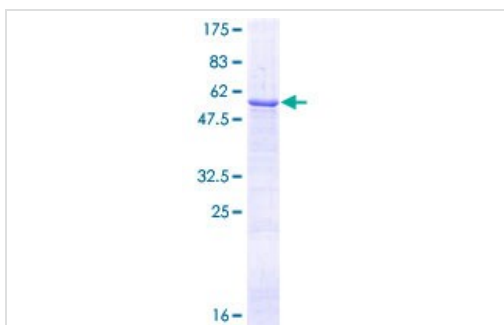
Phosphorylated on serine and threonine residues.

Phosphorylated on tyrosine residues upon stimulation with PDGF. Tyrosine phosphorylation promotes interaction with SHC1.

Cellular localization

Cytoplasm. Nucleus. After cleavage, the intracellular domain (LRPICD) is detected both in the cytoplasm and in the nucleus and Cell membrane. Membrane, coated pit.

Images



ab158828 on a 12.5% SDS-PAGE stained with Coomassie Blue.

SDS-PAGE - Recombinant Human LRP1 protein
(ab158828)

Please note: All products are "FOR RESEARCH USE ONLY. NOT FOR USE IN DIAGNOSTIC PROCEDURES"

Our Abpromise to you: Quality guaranteed and expert technical support

- Replacement or refund for products not performing as stated on the datasheet
- Valid for 12 months from date of delivery
- Response to your inquiry within 24 hours

- We provide support in Chinese, English, French, German, Japanese and Spanish
- Extensive multi-media technical resources to help you
- We investigate all quality concerns to ensure our products perform to the highest standards

If the product does not perform as described on this datasheet, we will offer a refund or replacement. For full details of the Abpromise, please visit <https://www.abcam.com/abpromise> or contact our technical team.

Terms and conditions

- Guarantee only valid for products bought direct from Abcam or one of our authorized distributors