

Product datasheet

Recombinant Human LRRN1 protein ab163613

1 Image

Description

Product name	Recombinant Human LRRN1 protein
Expression system	Wheat germ
Protein length	Full length protein
Animal free	No
Nature	Recombinant
Species	Human

Sequence	<p>MARMSFVIAACQLVLGLLMTSLTESSIQNSECPQLCVC EIRPWFTPQSTY REATTVDCNDLRLTRIPSNLSSDTQVLLLQSNNAKTVD ELQQLFNLTEL DFSQNNFTNIKEVGLANLTQLTTLHLEENQITEMTDYCL QDLSNLQELYI NHNQISTISAHAFAGLKNLLRLHLNSNKLKVIDSRWFDS TPNLEILMIGE NPVIGILDMNFKPLANLRSLVLAGMYLTDIPGNALVGLD SLESLSFYDNK LVKVPQLALQKVP SLKFLDLNKNPIHKIQEGDFKNMLR LKELGINNMGEL VSVDRYALDNLPELTKLEATNNPKLSYHRLAFRSVPAL ESLMLNNAALN AIYQKTVESLPNLREISIHNSNPLRCD CVIHWINSNKTNIRF MEPLSMFCA MPPEYKGHQVKEVLIQDSSEQCLPMISHDSFPNRLNV DIGTTVFLDCRAM AEPEPEIYWVTPIGNKITVETLSDKYKLSSEG TLEISNIQI EDSGRYTCV AQNVQGADTRVATIKVNGTLLDGTQVLKMYVKQTESHSI LVSWKVNSNVM TSNLKWSSATMKIDNPHITYTARVPVDVHEYNLTHLQP STDYEVCLTVSN IHQQTQKSCVNVTTKNAFAVDISDQETSTALAAVMGS MFAVISLASIAV YFAKRFRKKNYHSLKMYMKTSSIPLNELYPPLINLWE GDSEKDKDGSA DTKPTQVDTSR SYMMW</p>
-----------------	--

Amino acids	1 to 716
Tags	proprietary tag N-Terminus

Specifications

Our [Abpromise guarantee](#) covers the use of **ab163613** in the following tested applications.

The application notes include recommended starting dilutions; optimal dilutions/concentrations should be determined by the end user.

Applications	Western blot ELISA
Form	Liquid

Additional notes

Preparation and Storage

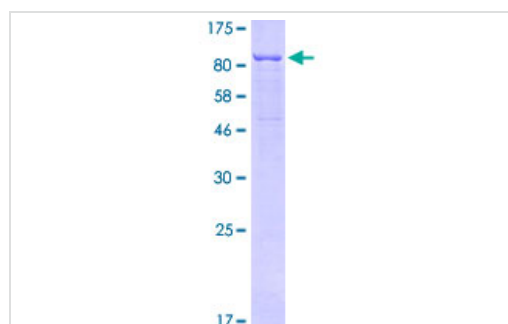
Stability and Storage	Shipped on dry ice. Upon delivery aliquot and store at -80°C. Avoid freeze / thaw cycles. pH: 8.00 Constituents: 0.31% Glutathione, 0.79% Tris HCl
------------------------------	--

General Info

Sequence similarities	Contains 1 fibronectin type-III domain. Contains 1 Ig-like C2-type (immunoglobulin-like) domain. Contains 11 LRR (leucine-rich) repeats. Contains 1 LRRCT domain. Contains 1 LRRNT domain.
------------------------------	--

Cellular localization	Membrane.
------------------------------	-----------

Images



ab163613 on a 12.5% SDS-PAGE stained with Coomassie Blue.

SDS-PAGE - Recombinant Human LRRN1 protein
(ab163613)

Please note: All products are "FOR RESEARCH USE ONLY. NOT FOR USE IN DIAGNOSTIC PROCEDURES"

Our Abpromise to you: Quality guaranteed and expert technical support

- Replacement or refund for products not performing as stated on the datasheet
- Valid for 12 months from date of delivery
- Response to your inquiry within 24 hours

- We provide support in Chinese, English, French, German, Japanese and Spanish
- Extensive multi-media technical resources to help you
- We investigate all quality concerns to ensure our products perform to the highest standards

If the product does not perform as described on this datasheet, we will offer a refund or replacement. For full details of the Abpromise, please visit <https://www.abcam.com/abpromise> or contact our technical team.

Terms and conditions

- Guarantee only valid for products bought direct from Abcam or one of our authorized distributors