

Product datasheet

Recombinant Human Lymphotactin/ATAC protein  
ab85406

1 Image

Description

<b>Product name</b>	Recombinant Human Lymphotactin/ATAC protein
<b>Purity</b>	> 95 % SDS-PAGE. ab85406 is purified using conventional chromatography techniques.
<b>Expression system</b>	Escherichia coli
<b>Protein length</b>	Full length protein
<b>Animal free</b>	No
<b>Nature</b>	Recombinant
<b>Species</b>	Human
<b>Sequence</b>	MGSSHHHHHH SSGLVPRGSH MVGSEVSDKR TCVSLTTQRL PVSRIKTYTI TEGSLRAVIF ITKRGLKVCA DPQATWVRDV VRSMDRKSNT RNNMIQTKPT GTQQSTNTAV TLTG

Specifications

Our [Abpromise guarantee](#) covers the use of **ab85406** in the following tested applications.

The application notes include recommended starting dilutions; optimal dilutions/concentrations should be determined by the end user.

<b>Applications</b>	SDS-PAGE
<b>Mass spectrometry</b>	MALDI-TOF
<b>Form</b>	Liquid
<b>Additional notes</b>	This product was previously labelled as Lymphotactin

Preparation and Storage

<b>Stability and Storage</b>	Shipped at 4°C. Upon delivery aliquot and store at -20°C or -80°C. Avoid repeated freeze / thaw cycles.  pH: 8.00 Constituents: 0.0308% DTT, 0.316% Tris HCl, 30% Glycerol (glycerin, glycerine), 1.16% Sodium
------------------------------	---

chloride

## General Info

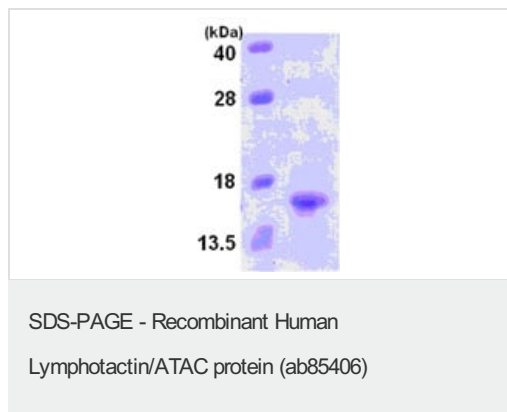
---

<b>Function</b>	Chemotactic activity for lymphocytes but not for monocytes or neutrophils.
<b>Tissue specificity</b>	Highest level in spleen, lower in peripheral leukocytes and very low levels in lung, colon and small intestine.
<b>Sequence similarities</b>	Belongs to the intercrine gamma family.
<b>Cellular localization</b>	Secreted.

---

## Images

---



15% SDS-PAGE showing ab85406 (3 $\mu$ g).

Note: Real molecular weight on SDS-PAGE is shifted up compared to predicted molecular weight.

**Please note:** All products are "FOR RESEARCH USE ONLY. NOT FOR USE IN DIAGNOSTIC PROCEDURES"

## Our Abpromise to you: Quality guaranteed and expert technical support

---

- Replacement or refund for products not performing as stated on the datasheet
- Valid for 12 months from date of delivery
- Response to your inquiry within 24 hours
- We provide support in Chinese, English, French, German, Japanese and Spanish
- Extensive multi-media technical resources to help you
- We investigate all quality concerns to ensure our products perform to the highest standards

If the product does not perform as described on this datasheet, we will offer a refund or replacement. For full details of the Abpromise, please visit <https://www.abcam.com/abpromise> or contact our technical team.

## Terms and conditions

---

- Guarantee only valid for products bought direct from Abcam or one of our authorized distributors