

## Product datasheet

# Recombinant Human LYPD3 protein ab162072

1 Image

### Overview

<b>Product name</b>	Recombinant Human LYPD3 protein
<b>Protein length</b>	Full length protein

### Description

<b>Nature</b>	Recombinant
<b>Source</b>	Wheat germ
<b>Amino Acid Sequence</b>	
<b>Species</b>	Human
<b>Sequence</b>	MDPARKAGAQMWTAGWLLLLLLLRGGAQALECYSC VQKADDGCSPNKMK TVKCAPGVDVCTEAVGAVETHGQFSLAVRGCGSGLP GKNDRGLDLHGLL AFIQLQQCAQDRCNAKLNLTSRALDPAGNESAYPPNG VECYSVCVGLSREA CQGTSPPPVVSCYNASDHVYKGCDFGNVTLTAAANVT SLPVRGCVQDEFCT RDGVTGPGFTLSGSCCQGSRCNSDLRNKTYFSPRIPP LVRLPPPEPTTVA STTSVTTSTAPVRPTSTTKPMPAPTSQTPRQGVEHE ASRDEEPRLTGGA AGHQDRSNSGQYPAKGGPQQPHNKGCVAPTAGLAAL LLAVAAGVLL
<b>Amino acids</b>	1 to 346
<b>Tags</b>	GST tag N-Terminus

### Specifications

Our [Abpromise guarantee](#) covers the use of **ab162072** in the following tested applications.

The application notes include recommended starting dilutions; optimal dilutions/concentrations should be determined by the end user.

<b>Applications</b>	ELISA
	Western blot

<b>Form</b>	Liquid
-------------	--------

**Additional notes**

Protein concentration is above or equal to 0.05 mg/ml.

**Preparation and Storage**

---

**Stability and Storage**

Shipped on dry ice. Upon delivery aliquot and store at -80°C. Avoid freeze / thaw cycles.

pH: 8.00

Constituents: 0.31% Glutathione, 0.79% Tris HCl

**General Info**

---

**Function**

Supports cell migration. May be involved in urothelial cell-matrix interactions. May be involved in tumor progression.

**Tissue specificity**

Expressed in placenta, skin and urothelium. Found in suprabasal keratinocytes of chronic wounds. Weak expression is found in esophagus and peripheral blood mononuclear cells. Found in the majority of primary and metastatic transitional cell carcinomas (TCCs) and as well in breast cancer tissues, but not in adjacent normal tissues. High expression is found in the tumor component of some noninvasive superficial lesions and in invasive and metastatic urothelial cancers.

**Sequence similarities**

Contains 2 UPAR/Ly6 domains.

**Post-translational modifications**

N-glycosylated and O-glycosylated.

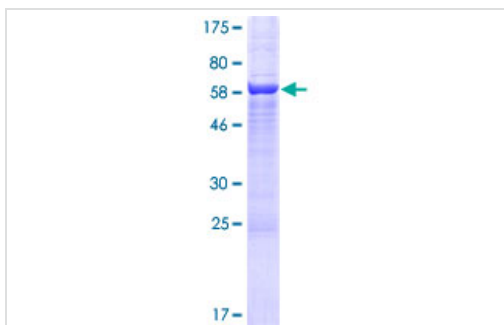
**Cellular localization**

Cell membrane.

---

**Images**

---



SDS-PAGE - Recombinant Human LYPD3 protein  
(ab162072)

ab162072 on a 12.5% SDS-PAGE stained with Coomassie Blue.

**Please note:** All products are "FOR RESEARCH USE ONLY AND ARE NOT INTENDED FOR DIAGNOSTIC OR THERAPEUTIC USE"

**Our Abpromise to you: Quality guaranteed and expert technical support**

---

- Replacement or refund for products not performing as stated on the datasheet
- Valid for 12 months from date of delivery

- Response to your inquiry within 24 hours
- We provide support in Chinese, English, French, German, Japanese and Spanish
- Extensive multi-media technical resources to help you
- We investigate all quality concerns to ensure our products perform to the highest standards

If the product does not perform as described on this datasheet, we will offer a refund or replacement. For full details of the Abpromise, please visit <https://www.abcam.com/abpromise> or contact our technical team.

### **Terms and conditions**

---

- Guarantee only valid for products bought direct from Abcam or one of our authorized distributors