

Product datasheet

Recombinant Human LYPLAL1 protein ab130056

1 Image

Description

| | |
|-----------------------------------|---|
| Product name | Recombinant Human LYPLAL1 protein |
| Purity | > 95 % SDS-PAGE. ab130056 is purified using conventional chromatography techniques. |
| Expression system | Escherichia coli |
| Accession | Q5VWZ2 |
| Protein length | Full length protein |
| Animal free | No |
| Nature | Recombinant |
| Species | Human |
| Sequence | MGSSHHHHHH SSGLVPRGSH MGSHEMAASG SVLQRCIVSP AGRHSASLIF LHGSGDSGQG LRMWIKQVLN QDLTFQHIKI YPTAPPRSY TPMKGGISNV WFDRFKITND CPEHLESIDV MCQVLTDLID EEVKSGIKKN RILIGGFSMG GCMAMHLAYR NHQDVAGVFA LSSFLNKASA VYQALQKSNG VLPELFQCHG TADELVLHSW AEETNSMLKS LGVTTKFHSF PNVYHELST ELDILKLWIL TKLPGEMEKQ K |
| Predicted molecular weight | 29 kDa including tags |
| Amino acids | 1 to 237 |
| Tags | His tag N-Terminus |

Specifications

Our [Abpromise guarantee](#) covers the use of **ab130056** in the following tested applications.
The application notes include recommended starting dilutions; optimal dilutions/concentrations should be determined by the end user.

| | |
|--------------------------|-------------------------------|
| Applications | SDS-PAGE Mass Spectrometry |
| Mass spectrometry | MALDI-TOF |
| Form | Liquid |

Preparation and Storage

Stability and Storage

Shipped at 4°C. Store at +4°C short term (1-2 weeks). Upon delivery aliquot. Store at -20°C or -80°C. Avoid freeze / thaw cycle.

pH: 8.00

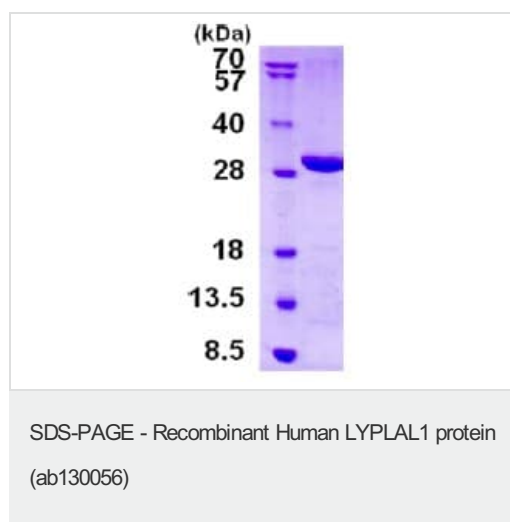
Constituents: 0.32% Tris HCl, 10% Glycerol (glycerin, glycerine), 0.88% Sodium chloride

General Info**Sequence similarities**

Belongs to the AB hydrolase 2 family.

Cellular localization

Cytoplasm.

Images

15% SDS-PAGE showing ab130056 (3µg).

Please note: All products are "FOR RESEARCH USE ONLY. NOT FOR USE IN DIAGNOSTIC PROCEDURES"

Our Abpromise to you: Quality guaranteed and expert technical support

- Replacement or refund for products not performing as stated on the datasheet
- Valid for 12 months from date of delivery
- Response to your inquiry within 24 hours
- We provide support in Chinese, English, French, German, Japanese and Spanish
- Extensive multi-media technical resources to help you
- We investigate all quality concerns to ensure our products perform to the highest standards

If the product does not perform as described on this datasheet, we will offer a refund or replacement. For full details of the Abpromise, please visit <https://www.abcam.com/abpromise> or contact our technical team.

Terms and conditions

- Guarantee only valid for products bought direct from Abcam or one of our authorized distributors