

Product datasheet

Recombinant human MALT1/MLT protein (Active)  
 ab271604

2 Images

Description

---

<b>Product name</b>	Recombinant human MALT1/MLT protein (Active)
<b>Biological activity</b>	Specific Activity: 40 pmol/min/μg.
<b>Purity</b>	>= 90 % SDS-PAGE.
<b>Expression system</b>	HEK 293 cells
<b>Accession</b>	<a href="#">Q9UDY8</a>
<b>Protein length</b>	Full length protein
<b>Animal free</b>	No
<b>Nature</b>	Recombinant
<b>Species</b>	Human
<b>Predicted molecular weight</b>	93 kDa
<b>Amino acids</b>	2 to 824
<b>Tags</b>	DDDDK tag N-Terminus

Specifications

---

Our [Abpromise guarantee](#) covers the use of **ab271604** in the following tested applications.

The application notes include recommended starting dilutions; optimal dilutions/concentrations should be determined by the end user.

<b>Applications</b>	Functional Studies SDS-PAGE
<b>Form</b>	Liquid

Preparation and Storage

---

<b>Stability and Storage</b>	Shipped on Dry Ice. Store at -80°C. Avoid freeze / thaw cycle. pH: 8 Constituents: 0.63% Tris HCl, 0.64% Sodium chloride, 0.02% Potassium chloride, 0.02% Tween, 20% Glycerol
------------------------------	---

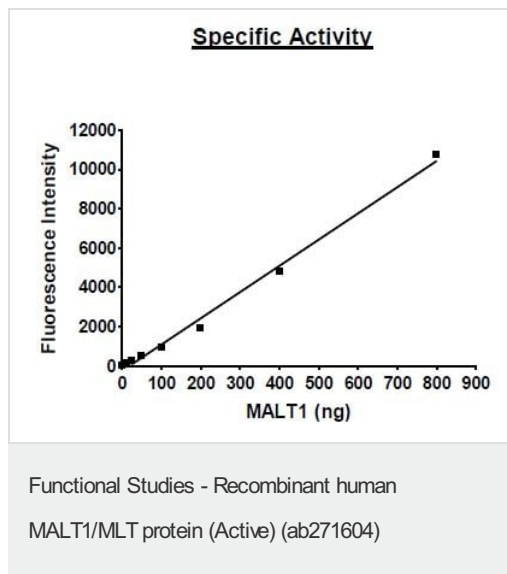
100µg/ml DDDDK peptide

This product is an active protein and may elicit a biological response in vivo, handle with caution.

## General Info

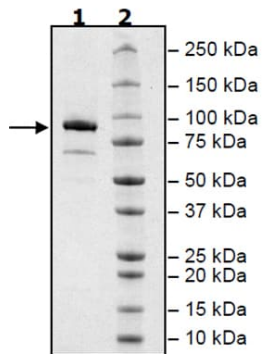
<b>Function</b>	Enhances BCL10-induced activation of NF-kappa-B. Involved in nuclear export of BCL10. Binds to TRAF6, inducing TRAF6 oligomerization and activation of its ligase activity. Has ubiquitin ligase activity. MALT1-dependent BCL10 cleavage plays an important role in T-cell antigen receptor-induced integrin adhesion.
<b>Tissue specificity</b>	Highly expressed in peripheral blood mononuclear cells. Detected at lower levels in bone marrow, thymus and lymph node, and at very low levels in colon and lung.
<b>Involvement in disease</b>	Note=A chromosomal aberration involving MALT1 is recurrent in low-grade mucosa-associated lymphoid tissue (MALT lymphoma). Translocation t(11;18)(q21;q21) with BIRC2. This translocation is found in approximately 50% of cytogenetically abnormal low-grade MALT lymphoma.
<b>Sequence similarities</b>	Belongs to the peptidase C14B family. Contains 1 death domain. Contains 2 Ig-like C2-type (immunoglobulin-like) domains.
<b>Cellular localization</b>	Cytoplasm > perinuclear region. Nucleus. Shuttles between the nucleus and cytoplasm. Found in perinuclear structures together with BCL10.

## Images



Specific activity of ab271604.

SDS-PAGE analysis of 2 µg ab271604.



SDS-PAGE - Recombinant human MALT1/MLT protein (Active) (ab271604)

**Please note:** All products are "FOR RESEARCH USE ONLY. NOT FOR USE IN DIAGNOSTIC PROCEDURES"

### Our Abpromise to you: Quality guaranteed and expert technical support

---

- Replacement or refund for products not performing as stated on the datasheet
- Valid for 12 months from date of delivery
- Response to your inquiry within 24 hours
  
- We provide support in Chinese, English, French, German, Japanese and Spanish
- Extensive multi-media technical resources to help you
- We investigate all quality concerns to ensure our products perform to the highest standards

If the product does not perform as described on this datasheet, we will offer a refund or replacement. For full details of the Abpromise, please visit <https://www.abcam.com/abpromise> or contact our technical team.

### Terms and conditions

---

- Guarantee only valid for products bought direct from Abcam or one of our authorized distributors