

Product datasheet

Recombinant Human MAP3K13 protein ab160368

1 Image

Description

Product name	Recombinant Human MAP3K13 protein
Expression system	Wheat germ
Protein length	Full length protein
Animal free	No
Nature	Recombinant
Species	Human

Sequence

```

MANFQEHLSCSSSPHLPFSESKTFNGLQDEL TAMGNHPS
PKLLEDQQEKG
MVRTELIESVHSPVTTTTLTSVSEDSRDQFENSVLQLREH
DESETAVSQG
NSNTVDGESTSGTEDIKIQFSRSGSGSGGFLEGLFGCLRP
VWNIIGKAYS
TDYKLQQQDTWEVPFEEISELQWLGSGAQGAVFLGKFR
EEVAIKKVREQ
NETDIKHLRKLKHPNIIAFKGVCTQAPCYCIIMEYCAHGQLY
EVL RAGRK
ITPRLLDVWSTGIASGMNYLHLHKIIHRDLKSPNVLVHTDA
VKISDFGT
SKELSDKSTKMSFAGTVAWMAPEVIRNEPVSEKVDWSF
GVVLWELLTGE
IPYKDVDSSAIWGVGSNSLHLPVPSTCPDGFKILMKQTWQ
SKPRNRPSF
RQTLMHLDIASADVLATPQETYFKSQA EWREEVKKHFEKI
KSEGTCIHRL
DEELIRRRREELRHALDIREHYERKLERANNLYMELSAIML
QLEMREKEL
IKREQAVEKKYPGT YKRHPVRPIIHPNAMEKLMKRKGVP
H
KSGMQTKRPD
LLRSEGIPTTEVAPTASPLSGSPKMSTSSSKSRYSKPRH
RRGNSRGS
H
DFAAILKNQPAQENSPHTYLHQAQSQYPSLHHHNSLQQ
QYQQPPPAMSQ
SHHPRLNMHGQDIATCANNLRYFGPAAALRSPLSNHAQR
QLPGSSPDLIS
TAMAADCWRSSEPDKGQAGPWGCCQADAYDPCLQCR

```

PEQYGSLDIPSAEP
VGRSPDLSKSPAHNPLLENAQSSEKTEENEFSGCRSESS
LGTSHLGTPPA
LPRKTRPLQKSGDDSSSEEEEGEVDSEVEFPRRQRPHRCI
SSCQSYSTFSS
ENFSVSDGEEGNTSDHSNSPDELADKLEDRLAEKLDLL
SQTPEIPIDIS
SHSDGLSDKECAVRRVKTQMSLGKLCVEERGYENPMQF
EESDCDSSDGEC SDATVRTNKHYSSATW

Amino acids 1 to 966
Tags GST tag N-Terminus

Specifications

Our [Abpromise guarantee](#) covers the use of **ab160368** in the following tested applications.

The application notes include recommended starting dilutions; optimal dilutions/concentrations should be determined by the end user.

Applications ELISA
Western blot

Form Liquid

Additional notes

Preparation and Storage

Stability and Storage Shipped on dry ice. Upon delivery aliquot and store at -80°C. Avoid freeze / thaw cycles.
pH: 8.00
Constituents: 0.31% Glutathione, 0.79% Tris HCl

General Info

Function Activates the JUN N-terminal pathway through activation of the MAP kinase kinase MAP2K7. Acts synergistically with PRDX3 to regulate the activation of NF-kappa-B in the cytosol. This activation is kinase-dependent and involves activating the IKK complex, the IKBKB-containing complex that phosphorylates inhibitors of NF-kappa-B.

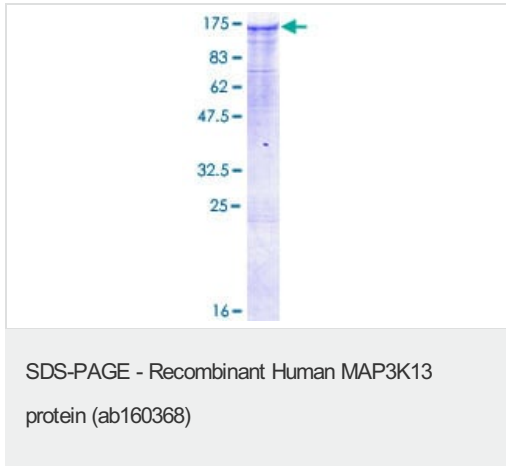
Tissue specificity Expressed in the adult brain, liver, placenta and pancreas, with expression strongest in the pancreas.

Sequence similarities Belongs to the protein kinase superfamily. STE Ser/Thr protein kinase family. MAP kinase kinase kinase subfamily.
Contains 1 protein kinase domain.

Post-translational modifications Autophosphorylated on serine and threonine residues.

Cellular localization Cytoplasm. Membrane.

Images



ab160368 on a 12.5% SDS-PAGE stained with Coomassie Blue.

Please note: All products are "FOR RESEARCH USE ONLY. NOT FOR USE IN DIAGNOSTIC PROCEDURES"

Our Abpromise to you: Quality guaranteed and expert technical support

- Replacement or refund for products not performing as stated on the datasheet
- Valid for 12 months from date of delivery
- Response to your inquiry within 24 hours
- We provide support in Chinese, English, French, German, Japanese and Spanish
- Extensive multi-media technical resources to help you
- We investigate all quality concerns to ensure our products perform to the highest standards

If the product does not perform as described on this datasheet, we will offer a refund or replacement. For full details of the Abpromise, please visit <https://www.abcam.com/abpromise> or contact our technical team.

Terms and conditions

- Guarantee only valid for products bought direct from Abcam or one of our authorized distributors