

Product datasheet

Recombinant human MAP3K9 protein ab125554

5 Images

Description

Product name	Recombinant human MAP3K9 protein
Biological activity	The specific activity of ab125554 was determined to be 116 nmol/min/mg.
Purity	> 85 % Densitometry. Purity was determined to be >85% by densitometry.
Expression system	Baculovirus infected Sf9 cells
Accession	P80192
Protein length	Protein fragment
Animal free	No
Nature	Recombinant
Species	Human
Predicted molecular weight	77 kDa including tags
Amino acids	1 to 433

Specifications

Our [Abpromise guarantee](#) covers the use of **ab125554** in the following tested applications.

The application notes include recommended starting dilutions; optimal dilutions/concentrations should be determined by the end user.

Applications	Western blot Functional Studies SDS-PAGE
Form	Liquid
Additional notes	ab64311 (Myelin Basic Protein protein) can be utilized as a substrate for assessing kinase activity

Preparation and Storage

Stability and Storage	Shipped on dry ice. Upon delivery aliquot and store at -80°C. Avoid freeze / thaw cycles. pH: 7.50 Constituents: 0.31% Glutathione, 0.002% PMSF, 0.004% DTT, 0.79% Tris HCl, 0.003% EDTA, 25% Glycerol (glycerin, glycerine), 0.88% Sodium chloride
------------------------------	---

This product is an active protein and may elicit a biological response in vivo, handle with caution.

General Info

Function

Activates the JUN N-terminal pathway.

Tissue specificity

Expressed in epithelial tumor cell lines of colonic, breast and esophageal origin.

Sequence similarities

Belongs to the protein kinase superfamily. STE Ser/Thr protein kinase family. MAP kinase kinase subfamily.

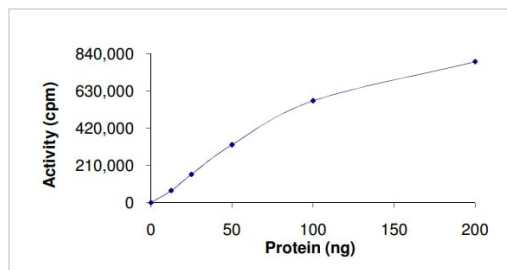
Contains 1 protein kinase domain.

Contains 1 SH3 domain.

Post-translational modifications

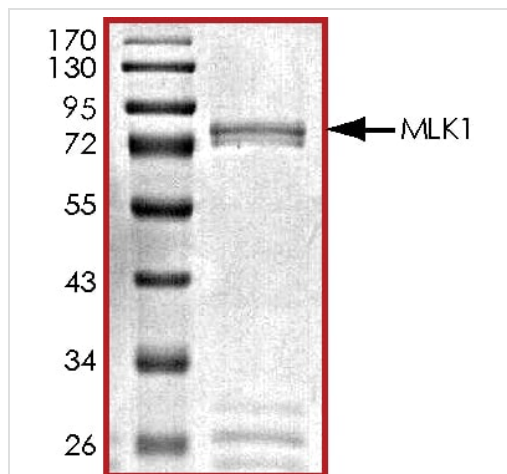
Autophosphorylation on serine and threonine residues within the activation loop plays a role in enzyme activation. Thr-312 is likely to be the main autophosphorylation site.

Images



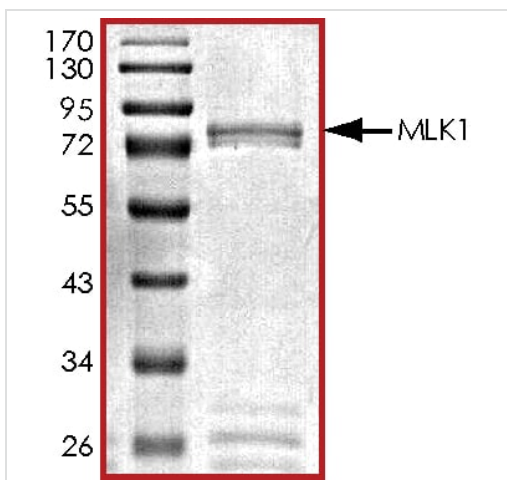
The specific activity of MAP3K9 (ab125554) was determined to be 133 nmol/min/mg as per activity assay protocol

Functional Studies - Recombinant human MAP3K9 protein (ab125554)



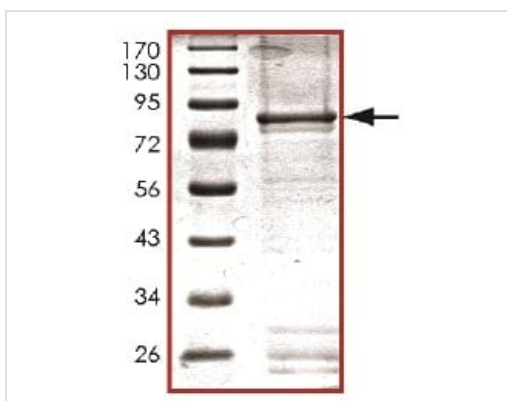
SDS PAGE analysis of ab125554

SDS-PAGE - Recombinant human MAP3K9 protein (ab125554)



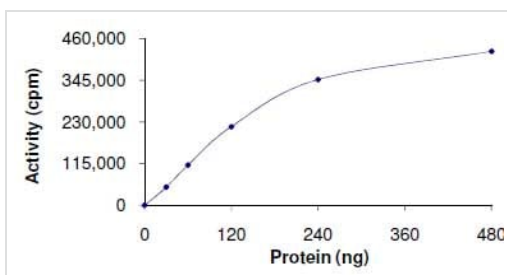
SDS PAGE analysis of ab125554

SDS-PAGE - Recombinant human MAP3K9 protein (ab125554)



SDS-PAGE analysis of ab125554.

SDS-PAGE - Recombinant human MAP3K9 protein (ab125554)



The specific activity of ab125554 was determined to be 116 nmol/min/mg by Kinase Assay.

Functional Studies - Recombinant human MAP3K9 protein (ab125554)

Please note: All products are "FOR RESEARCH USE ONLY. NOT FOR USE IN DIAGNOSTIC PROCEDURES"

Our Abpromise to you: Quality guaranteed and expert technical support

- Replacement or refund for products not performing as stated on the datasheet
- Valid for 12 months from date of delivery
- Response to your inquiry within 24 hours

- We provide support in Chinese, English, French, German, Japanese and Spanish
- Extensive multi-media technical resources to help you
- We investigate all quality concerns to ensure our products perform to the highest standards

If the product does not perform as described on this datasheet, we will offer a refund or replacement. For full details of the Abpromise, please visit <https://www.abcam.com/abpromise> or contact our technical team.

Terms and conditions

- Guarantee only valid for products bought direct from Abcam or one of our authorized distributors