

Product datasheet

Recombinant Human MAPK6/ERK-3 protein ab204165

1 Image

Description

Product name Recombinant Human MAPK6/ERK-3 protein

Purity > 75 % Densitometry.

Expression system Baculovirus infected Sf9 cells

Accession [Q16659](#)

Protein length Full length protein

Animal free No

Nature Recombinant

Species Human

Sequence

```

MAEKFESLMNIHGFDLGSRYMDLKPLGCGGNGLVFSA
VDNDCDKRVAIKK
MLTDPQSVKHALREIKIIRRLDHDNIVKVFEILGPSGSQ
L
TDDVGSLTE
LNSVYVQEYMETDLANVLEQGPLEEHARLFMYQLLR
GLKYIHSANVLH
RDLKPANLFINTEDLVLKIGDFGLARIMDPHYSHKGHLS
EGLVTKWYRSP
RLLSPNNYTKAIDMWAAGCIFAEMLTGKTLFAGAHEL
EQ MQLILESI
PVVHEEDRQELLSVIPVYIRNDMTEPHKPLTQLLPGISR
EALDFLEQILT
FSPMDRLTAEALSHPYMSIYSPMDEPISSHPPHIED
EVDDILLMDETH
SHYNWERYHDCQFSEHDWPVHNNFDIDEVQLDPRAL
SDVTDEEEVQVDP
RKYLDGDREKYLEDPAFDTNYSTEPWCQYSDHHENKY
CDLECSHTCNYKT
RSSSYLDNLVWRESEVNHYEPKLIIDLSNWKEQSKEK
SDKKGKSKCERN
GLVKAQIALEEASQQLAGKEREKNQGFDFDSFIAGTIQ
LSSQHEPTDVVD
KLNDLNSSVSQLELKSLSKSVSQEKQEKGMANLAQL
EALYQSSWDSQFV
SGGEDCFFINQFCEVRKDEQVEKENTYTSYLDKFFSR

```

KEDTEMLETEPVE
DGKLGGERGHEEGFLNNSGEFLFNKQLESIGIPQFHSPV
GSPLKSIQATLT PSAMKSSPQIPHQTYSSILKHLN

| | |
|--|------------------------|
| Predicted molecular weight | 135 kDa including tags |
| Amino acids | 1 to 721 |
| Tags | GST tag N-Terminus |
| Additional sequence information | NM_002748 |

Specifications

Our [Abpromise guarantee](#) covers the use of **ab204165** in the following tested applications.

The application notes include recommended starting dilutions; optimal dilutions/concentrations should be determined by the end user.

| | |
|-------------------------|-------------------------------|
| Applications | SDS-PAGE Western blot |
| Form | Liquid |
| Additional notes | Previously labelled as MAPK6. |

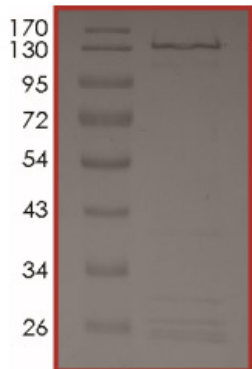
Preparation and Storage

| | |
|------------------------------|--|
| Stability and Storage | Shipped on Dry Ice. Upon delivery aliquot. Store at -80°C. Avoid freeze / thaw cycle. pH: 7.5 Constituents: 0.79% Tris HCl, 0.87% Sodium chloride, 0.31% Glutathione, 0.003% EDTA, 0.002% PMSF, 0.004% DTT, 25% Glycerol |
|------------------------------|--|

General Info

| | |
|---|--|
| Function | Phosphorylates microtubule-associated protein 2 (MAP2). May promote entry in the cell cycle. |
| Tissue specificity | Highest expression in the skeletal muscle, followed by the brain. Also found in heart, placenta, lung, liver, pancreas, kidney and skin fibroblasts. |
| Sequence similarities | Belongs to the protein kinase superfamily. CMGC Ser/Thr protein kinase family. MAP kinase subfamily. Contains 1 protein kinase domain. |
| Domain | The TXY motif contains the threonine and tyrosine residues whose phosphorylation activates the MAP kinases. |
| Post-translational modifications | Dually phosphorylated on Thr-626 and Tyr-628, which activates the enzyme. |

Images



Analysis of the purity of ab204165 by densitometry.

Western blot - Recombinant Human MAPK6/ERK-3 protein (ab204165)

Please note: All products are "FOR RESEARCH USE ONLY. NOT FOR USE IN DIAGNOSTIC PROCEDURES"

Our Abpromise to you: Quality guaranteed and expert technical support

- Replacement or refund for products not performing as stated on the datasheet
- Valid for 12 months from date of delivery
- Response to your inquiry within 24 hours
- We provide support in Chinese, English, French, German, Japanese and Spanish
- Extensive multi-media technical resources to help you
- We investigate all quality concerns to ensure our products perform to the highest standards

If the product does not perform as described on this datasheet, we will offer a refund or replacement. For full details of the Abpromise, please visit <https://www.abcam.com/abpromise> or contact our technical team.

Terms and conditions

- Guarantee only valid for products bought direct from Abcam or one of our authorized distributors