

Product datasheet

Recombinant Human MARK2 protein ab158356

1 Image

Overview

<b>Product name</b>	Recombinant Human MARK2 protein
<b>Protein length</b>	Full length protein

Description

<b>Nature</b>	Recombinant
<b>Source</b>	Wheat germ
<b>Amino Acid Sequence</b>	
<b>Species</b>	Human

<b>Sequence</b>	<p>MIRGRNSATSADEQPHIGNYRLLKTIGKGNFAKVKLARH          ILTGKEVAVKI          IDKTQLNSSLQKLFREVRIMKVLNHPNIVKLFVIETEK          TLYLVMEYAS          GGEVFDYLVAHGRMKEKEARAKFRQVSAVQYCHQKF          IVHRDLKAENLLL          DADMNIKIADFGFSNEFTFGNKLDTCGSPPYAAPELF          QGKKYDGPEVDV          WSLGVILYTLVSGSLPFDGQNLKELRERVLRGKYRIPFY          MSTDCENLLKK          FLILNPSKRGTLQIMKDRWMNVGHEDDELKPYVEPL          PDYKDPRTLMV          SMGYTREEIQDSL VGQRYNEVMATYLLGYKSSELEGD          TITLKPRPSADL          TNSSAPSPSHKVQRSVSANPKQRRFSDQAAGPAIPTS          NSYSKKTQSNAE          NKRPEEDRESGRKASSTAKVPASPLPGLERKKTTP          STNSVLSTSTNRS          RNSPLLERASLGQASIQNGKDSL TMPGSRASASASA          AVSAARPRQHQS          MSASVHPNKASGLPPTESNCEVPRPSTAPQRPVAVS          PSAHNISSSGGAPD          RTNFPRGVSSRSTFHAGQLRQVRDQQNLPGVTPAS          PSGHSQRRGASGS          IFSKFTSKFVRRNLSFRFARRNLNEPESKDRVETLRPH          VVGSGGNDKEKE</p>
-----------------	--

EFREAKPRSLRFTWSMKTTSMEPNEMMREIRKVLDA  
NSCQSELHEKYML  
LCMHGTPGHEDFVQWEMEVCKLPRLSLNGVRFKRIS  
GTSMAFKNIASKIA NELKL

**Amino acids** 1 to 755  
**Tags** proprietary tag N-Terminus

## Specifications

---

Our [Abpromise guarantee](#) covers the use of **ab158356** in the following tested applications.

The application notes include recommended starting dilutions; optimal dilutions/concentrations should be determined by the end user.

**Applications** ELISA  
Western blot

**Form** Liquid

**Additional notes** Protein concentration is above or equal to 0.05 mg/ml.

## Preparation and Storage

---

**Stability and Storage** Shipped on dry ice. Upon delivery aliquot and store at -80°C. Avoid freeze / thaw cycles.  
pH: 8.00  
Constituents: 0.31% Glutathione, 0.79% Tris HCl

## General Info

---

**Function** Role in epithelial morphogenesis. Modulates the developmental decision to build a columnar versus a hepatic epithelial cell apparently by promoting a switch from a direct to a transcytotic mode of apical protein delivery. Essential for the asymmetric development of membrane domains of polarized epithelial cells. One or more isoforms may play a role in graft rejection.

**Tissue specificity** High levels of expression in heart, brain, skeletal muscle and pancreas, lower levels observed in lung, liver and kidney.

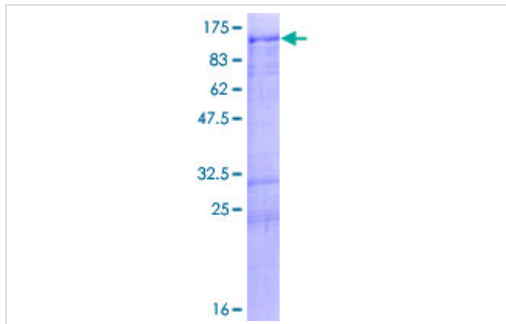
**Sequence similarities** Belongs to the protein kinase superfamily. CAMK Ser/Thr protein kinase family. MARK subfamily. Contains 1 KA1 (kinase-associated) domain.  
Contains 1 protein kinase domain.  
Contains 1 UBA domain.

**Cellular localization** Cell membrane. Phosphorylated by PRKCZ in polarized epithelial cells, resulting in an interaction with YWHAZ which promotes relocation from the lateral to the apical membrane.

---

## Images

---



ab158356 on a 12.5% SDS-PAGE stained with Coomassie Blue.

SDS-PAGE - Recombinant Human MARK2 protein  
(ab158356)

**Please note:** All products are "FOR RESEARCH USE ONLY AND ARE NOT INTENDED FOR DIAGNOSTIC OR THERAPEUTIC USE"

### Our Abpromise to you: Quality guaranteed and expert technical support

---

- Replacement or refund for products not performing as stated on the datasheet
- Valid for 12 months from date of delivery
- Response to your inquiry within 24 hours
- We provide support in Chinese, English, French, German, Japanese and Spanish
- Extensive multi-media technical resources to help you
- We investigate all quality concerns to ensure our products perform to the highest standards

If the product does not perform as described on this datasheet, we will offer a refund or replacement. For full details of the Abpromise, please visit <https://www.abcam.com/abpromise> or contact our technical team.

### Terms and conditions

---

- Guarantee only valid for products bought direct from Abcam or one of our authorized distributors