

Product datasheet

Recombinant Human Mark3 protein ab158858

1 Image

Overview

Product name	Recombinant Human Mark3 protein
Protein length	Full length protein

Description

Nature	Recombinant
Source	Wheat germ
Amino Acid Sequence	
Species	Human

Sequence	<p>MSTRTPPLPTVNERDTENHTSHGDGRQEVTSTRTSRSGA RCRNSIASCADQ PHIGNYRLLKTIGKGNFAKVKLARHILTGREVAIKIIDKTQ LNPTSLQKL FREVRIMKILNHPNIVKLFVETETKLYLIMEYASGGGEVF DYLVAHGRM KEKEARSKFRQMSAVQYCHQKRIVHRDLKAENLLDA DMNIKIDFGFS NEFTVGGKLDTCGSPPYAAPELFGKKYDGPVVDV WSLGVILYTLVSGS LPFDGQNLKELRERVLRGKYRIPFYMSTDCENLLKRFL VLNPIKRGTLQ IMKDRWINAGHEEDELKPFVEPELIDSDQKRIDIMVGM GYSQEEIQESLS KMKYDEITATYLLLGRKSSELDASDSSSSSNLSLAKVR PSSDLNNTGQS PHHKVQRSVSSSQKQRRYSDHAGPAIPSVVAYPKRS QTSTADSDLKEDGI SSRKSSGSAVGGKGIAPASPMLGNASPNKADIPERK KSSTVPSSNTASG GMTRRNTYVCSERTTADRHSVIQNGKENSTIPDQRTPV ASTHSSAATP DRIRFPRGTASRSTFHGQPRRRTATYNGPPASPSLS HEATPLSQTRSRG STNLFSKLTSKLTRSRNVS AEQKDENKEAKPRSLRFT WSMKTSSMDPGD</p>
-----------------	------------------------------------------------------------------------------------------------------------------------------------------------------------------------------------------------------------------------------------------------------------------------------------------------------------------------------------------------------------------------------------------------------------------------------------------------------------------------------------------------------------------------------------------------------------------------------------------------------------------------------------------------------------------------------------------------------------------------------------------------------------------------------------------------------------------------------

MMREIRKVLNANNCDYEQRRERLLFCVHGDGHAENLV
QWEMEVCKLPRLS
LNGVRFKRISGTSIAFKNIASKIANELKL

Amino acids 1 to 729
Tags GST tag N-Terminus

Specifications

Our [Abpromise guarantee](#) covers the use of **ab158858** in the following tested applications.

The application notes include recommended starting dilutions; optimal dilutions/concentrations should be determined by the end user.

Applications Western blot
ELISA
Form Liquid
Additional notes Protein concentration is above or equal to 0.05 mg/ml.

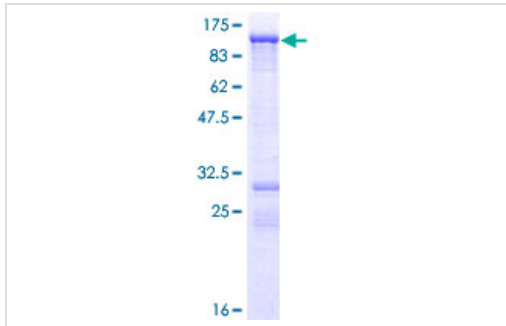
Preparation and Storage

Stability and Storage Shipped on dry ice. Upon delivery aliquot and store at -80°C. Avoid freeze / thaw cycles.
pH: 8.00
Constituents: 0.31% Glutathione, 0.79% Tris HCl

General Info

Function Involved in the specific phosphorylation of microtubule-associated proteins for tau, MAP2 and MAP4. Phosphorylates CDC25C on 'Ser-216'.
Tissue specificity Ubiquitous.
Sequence similarities Belongs to the protein kinase superfamily. CAMK Ser/Thr protein kinase family. MARK subfamily.
Contains 1 KA1 (kinase-associated) domain.
Contains 1 protein kinase domain.
Contains 1 UBA domain.

Images



ab158858 on a 12.5% SDS-PAGE stained with Coomassie Blue.

SDS-PAGE - Recombinant Human Mark3 protein
(ab158858)

Please note: All products are "FOR RESEARCH USE ONLY AND ARE NOT INTENDED FOR DIAGNOSTIC OR THERAPEUTIC USE"

Our Abpromise to you: Quality guaranteed and expert technical support

- Replacement or refund for products not performing as stated on the datasheet
- Valid for 12 months from date of delivery
- Response to your inquiry within 24 hours

- We provide support in Chinese, English, French, German, Japanese and Spanish
- Extensive multi-media technical resources to help you
- We investigate all quality concerns to ensure our products perform to the highest standards

If the product does not perform as described on this datasheet, we will offer a refund or replacement. For full details of the Abpromise, please visit <https://www.abcam.com/abpromise> or contact our technical team.

Terms and conditions

- Guarantee only valid for products bought direct from Abcam or one of our authorized distributors