

Product datasheet

Recombinant Human MC1-R protein ab152515

1 Image

Description

<b>Product name</b>	Recombinant Human MC1-R protein
<b>Expression system</b>	Wheat germ
<b>Accession</b>	<a href="#">Q01726</a>
<b>Protein length</b>	Full length protein
<b>Animal free</b>	No
<b>Nature</b>	Recombinant
<b>Species</b>	Human
<b>Sequence</b>	<pre> MAVQGSQRRLGSLNSTPTAIPQLGLAANQTGARCLEVSI SDGLFSLGL VSLVENALVVATIAKNRNLHSPMYCFICCLALSDLLVSGSN VLETAVILL LEAGALVARAAVLQQLDNVIDVITCSSMLSSLCLFLGAIIVD RYSISIFYAL RYHSTVTLPARRAVAAIWWASVVFSTLFIAYYDHVAVLLC LVVFFLAML VLMAVLYVHMLARACQHAQGIARLHKRQRPVHQGFGLKG AVTLTILLGIF FLCWGPFFLHLTLVLCPEHPTCGCIFKNFNLFLALICNAIID PLIYAF HSQELRRTLKEVLTCSW </pre>
<b>Predicted molecular weight</b>	61 kDa including tags
<b>Amino acids</b>	1 to 317

Specifications

Our [Abpromise guarantee](#) covers the use of **ab152515** in the following tested applications. The application notes include recommended starting dilutions; optimal dilutions/concentrations should be determined by the end user.

<b>Applications</b>	<ul style="list-style-type: none"> <li>ELISA</li> <li>SDS-PAGE</li> <li>Western blot</li> </ul>
<b>Form</b>	Liquid
<b>Additional notes</b>	This product was previously labelled as MC1 Receptor.

## Preparation and Storage

---

**Stability and Storage** Shipped on dry ice. Upon delivery aliquot and store at -80°C. Avoid freeze / thaw cycles.  
pH: 8.00  
Constituents: 0.31% Glutathione, 0.79% Tris HCl

## General Info

---

**Function** Receptor for MSH (alpha, beta and gamma) and ACTH. The activity of this receptor is mediated by G proteins which activate adenylate cyclase.

**Tissue specificity** Melanocytes and corticoadrenal tissue.

**Involvement in disease** Genetic variations in MC1R are a cause of susceptibility to cutaneous malignant melanoma type 5 (CMM5) [MIM:613099]. Malignant melanoma is a malignant neoplasm of melanocytes, arising de novo or from a pre-existing benign nevus, which occurs most often in the skin but also may involve other sites.

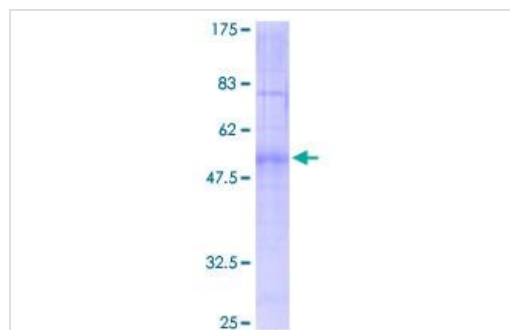
**Sequence similarities** Belongs to the G-protein coupled receptor 1 family.

**Cellular localization** Cell membrane.

---

## Images

---



12.5% SDS-PAGE analysis of ab152515 stained with Coomassie Blue.

SDS-PAGE - Recombinant Human MC1-R protein  
(ab152515)

**Please note:** All products are "FOR RESEARCH USE ONLY. NOT FOR USE IN DIAGNOSTIC PROCEDURES"

## Our Abpromise to you: Quality guaranteed and expert technical support

---

- Replacement or refund for products not performing as stated on the datasheet
- Valid for 12 months from date of delivery
- Response to your inquiry within 24 hours
- We provide support in Chinese, English, French, German, Japanese and Spanish

- Extensive multi-media technical resources to help you
- We investigate all quality concerns to ensure our products perform to the highest standards

If the product does not perform as described on this datasheet, we will offer a refund or replacement. For full details of the Abpromise, please visit <https://www.abcam.com/abpromise> or contact our technical team.

### **Terms and conditions**

---

- Guarantee only valid for products bought direct from Abcam or one of our authorized distributors