

Product datasheet

Recombinant human MCP1 protein (Active) ab218722

[1 Image](#)

Description

Product name	Recombinant human MCP1 protein (Active)	
Biological activity	Fully biologically active when compared to standard. The biological activity determined by a chemotaxis bioassay using human monocytes is in a concentration range of 10-100 ng/mL.	
Purity	> 96 % SDS-PAGE. >96 % as determined by HPLC .	
Endotoxin level	< 1.000 Eu/μg	
Expression system	Escherichia coli	
Accession	P13500	
Protein length	Full length protein	
Animal free	No	
Nature	Recombinant	
Species	Human	
Sequence	QPDAINAPVTCCYNFTNRKISVQRLASYRRITSSKCPKE AVIFKTVAKE ICADPKQKWVQDSMDHLDKQTQTPKT	
Predicted molecular weight	9 kDa	
Amino acids	24 to 99	
Additional sequence information	This product is for the mature full length protein. The signal peptide is not included.	

Specifications

Our [Abpromise guarantee](#) covers the use of **ab218722** in the following tested applications.

The application notes include recommended starting dilutions; optimal dilutions/concentrations should be determined by the end user.

Applications	SDS-PAGE HPLC Functional Studies
Form	Lyophilised

Preparation and Storage

Stability and Storage Shipped at 4°C. Store at -20°C long term. Store under desiccating conditions.

pH: 7.4

Constituents: 0.58% Sodium chloride, 99% Phosphate Buffer

Lyophilized from a 0.2 µm filtered concentrated solution

This product is an active protein and may elicit a biological response in vivo, handle with caution.

Reconstitution

Centrifuge vial prior to opening. Add sterile distilled water or aqueous buffer to a concentration of 0.1-1.0 mg/mL. Further dilutions should be made in appropriate buffered solutions. Upon reconstitution, stable for up to 1 week at 2-8°C. For longer term, store in working aliquots below -20°C. Avoid repeated freeze/thaw cycles.

General Info

Function

Chemotactic factor that attracts monocytes and basophils but not neutrophils or eosinophils. Augments monocyte anti-tumor activity. Has been implicated in the pathogenesis of diseases characterized by monocytic infiltrates, like psoriasis, rheumatoid arthritis or atherosclerosis. May be involved in the recruitment of monocytes into the arterial wall during the disease process of atherosclerosis.

Sequence similarities

Belongs to the intercrine beta (chemokine CC) family.

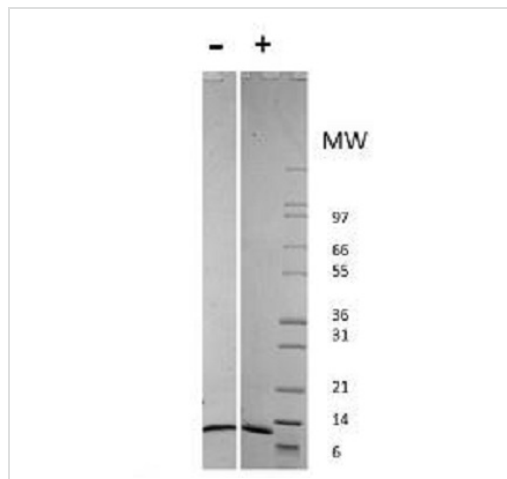
Post-translational modifications

Processing at the N-terminus can regulate receptor and target cell selectivity. Deletion of the N-terminal residue converts it from an activator of basophil to an eosinophil chemoattractant.

Cellular localization

Secreted.

Images



1 µg ab218722 in each lane (-) non-reducing conditions and (+) reducing conditions in a 4-20% Tris-Glycine gel, stained with coomassie blue. Human MCP1 has a predicted MW of 8.6 kDa.

SDS-PAGE - Recombinant human MCP1 protein
(Active) (ab218722)

Please note: All products are "FOR RESEARCH USE ONLY. NOT FOR USE IN DIAGNOSTIC PROCEDURES"

Our Abpromise to you: Quality guaranteed and expert technical support

- Replacement or refund for products not performing as stated on the datasheet
- Valid for 12 months from date of delivery
- Response to your inquiry within 24 hours

- We provide support in Chinese, English, French, German, Japanese and Spanish
- Extensive multi-media technical resources to help you
- We investigate all quality concerns to ensure our products perform to the highest standards

If the product does not perform as described on this datasheet, we will offer a refund or replacement. For full details of the Abpromise, please visit <https://www.abcam.com/abpromise> or contact our technical team.

Terms and conditions

- Guarantee only valid for products bought direct from Abcam or one of our authorized distributors