

## Product datasheet

# Recombinant Human MDP1 protein ab101631

1 Image

### Description

<b>Product name</b>	Recombinant Human MDP1 protein	
<b>Purity</b>	> 95 % SDS-PAGE. ab101631 was purified using conventional chromatography techniques.	
<b>Expression system</b>	Escherichia coli	
<b>Accession</b>	<a href="#">Q86V88</a>	
<b>Protein length</b>	Full length protein	
<b>Animal free</b>	No	
<b>Nature</b>	Recombinant	
<b>Species</b>	Human	
<b>Sequence</b>	<p><b>MGSSHHHHHSSGLVPRGSHMGSHMARLPKLAVFDLD</b>  <b>YTLWPFWDTHVD</b>  <b>PPFHKSSDGTVRDRRQDVRLYPEVPEVLKRLQSLGVPG</b>  <b>AAASRTSEIEG</b>  <b>ANQLLELFDLFRYFVHREMPGSKITHFERLQKKTGIPFSQM</b>  <b>IFFDDERR</b>  <b>NVDVSKLGVTCIHIQNGMNLQTLSQGLETFAKAQTGPLRS</b>  <b>SLEESPFEA</b></p>	
<b>Predicted molecular weight</b>	23 kDa including tags	
<b>Amino acids</b>	1 to 176	
<b>Tags</b>	His tag N-Terminus	

### Specifications

Our [Abpromise guarantee](#) covers the use of **ab101631** in the following tested applications.

The application notes include recommended starting dilutions; optimal dilutions/concentrations should be determined by the end user.

<b>Applications</b>	SDS-PAGE Mass Spectrometry
<b>Mass spectrometry</b>	MALDI-TOF
<b>Form</b>	Liquid

### Preparation and Storage

---

**Stability and Storage**

Shipped at 4°C. Upon delivery aliquot and store at -20°C or -80°C. Avoid repeated freeze / thaw cycles.

pH: 8.00

Constituents: 0.0308% DTT, 0.316% Tris HCl, 10% Glycerol (glycerin, glycerine), 0.58% Sodium chloride

---

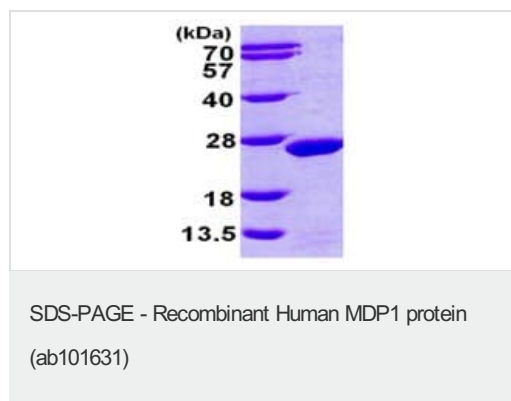
**General Info****Function**

Magnesium-dependent phosphatase which may act as a tyrosine phosphatase.

**Sequence similarities**

Belongs to the HAD-like hydrolase superfamily.

---

**Images**

15% SDS-PAGE analysis of 3 µg ab101631.

**Please note:** All products are "FOR RESEARCH USE ONLY. NOT FOR USE IN DIAGNOSTIC PROCEDURES"

---

**Our Abpromise to you: Quality guaranteed and expert technical support**

- Replacement or refund for products not performing as stated on the datasheet
- Valid for 12 months from date of delivery
- Response to your inquiry within 24 hours
  
- We provide support in Chinese, English, French, German, Japanese and Spanish
- Extensive multi-media technical resources to help you
- We investigate all quality concerns to ensure our products perform to the highest standards

If the product does not perform as described on this datasheet, we will offer a refund or replacement. For full details of the Abpromise, please visit <https://www.abcam.com/abpromise> or contact our technical team.

---

**Terms and conditions**

- Guarantee only valid for products bought direct from Abcam or one of our authorized distributors