

Product datasheet

Recombinant human MELK protein ab102551

5 Images

Description

Product name	Recombinant human MELK protein
Biological activity	The Specific activity of ab102551 was determined to be 200 nmol/min/mg.
Purity	> 85 % Densitometry. Purity was determined to be >85% by densitometry.
Expression system	Baculovirus infected Sf9 cells
Accession	Q14680
Protein length	Protein fragment
Animal free	No
Nature	Recombinant
Species	Human
Predicted molecular weight	61 kDa including tags
Amino acids	1 to 340

Specifications

Our [Abpromise guarantee](#) covers the use of **ab102551** in the following tested applications.

The application notes include recommended starting dilutions; optimal dilutions/concentrations should be determined by the end user.

Applications	Functional Studies SDS-PAGE Western blot
Form	Liquid
Additional notes	ab204885 (ZIP Kinase peptide substrate) can be utilized as a substrate for assessing kinase activity

Preparation and Storage

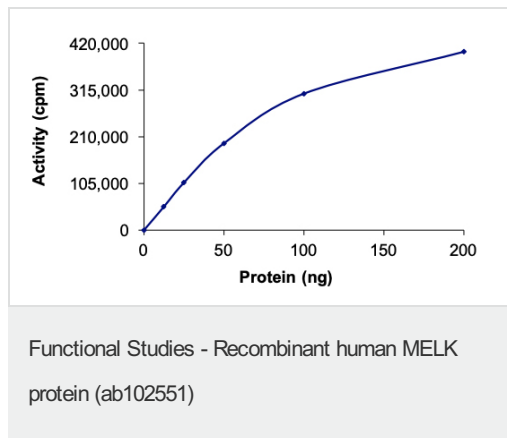
Stability and Storage	Shipped on dry ice. Upon delivery aliquot and store at -80°C. Avoid freeze / thaw cycles. pH: 7.50 Constituents: 0.307% Glutathione, 0.00174% PMSF, 0.00385% DTT, 0.79% Tris HCl, 0.00292% EDTA, 25% Glycerol, 0.87% Sodium chloride
------------------------------	--

This product is an active protein and may elicit a biological response in vivo, handle with caution.

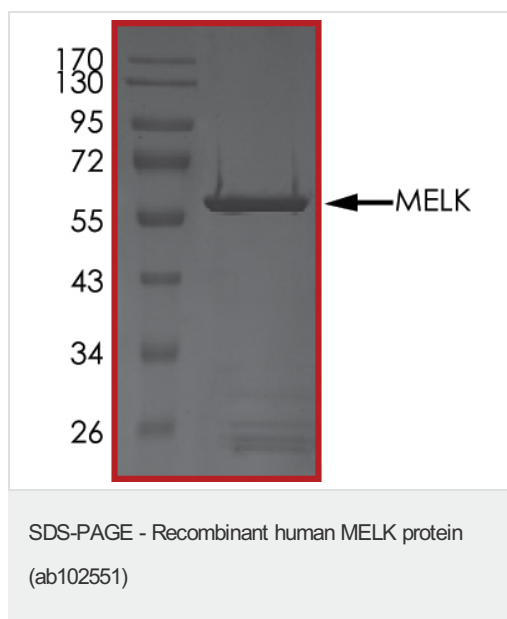
General Info

Function	Phosphorylates ZNF622 and may contribute to its redirection to the nucleus. May be involved in the inhibition of spliceosome assembly during mitosis.
Tissue specificity	Expressed in placenta, kidney, thymus, testis, ovary and intestine.
Sequence similarities	Belongs to the protein kinase superfamily. CAMK Ser/Thr protein kinase family. SNF1 subfamily. Contains 1 KA1 (kinase-associated) domain. Contains 1 protein kinase domain.
Post-translational modifications	Autophosphorylated. Thr-478 phosphorylation during mitosis promotes interaction with PPP1R8.
Cellular localization	Cytoplasm.

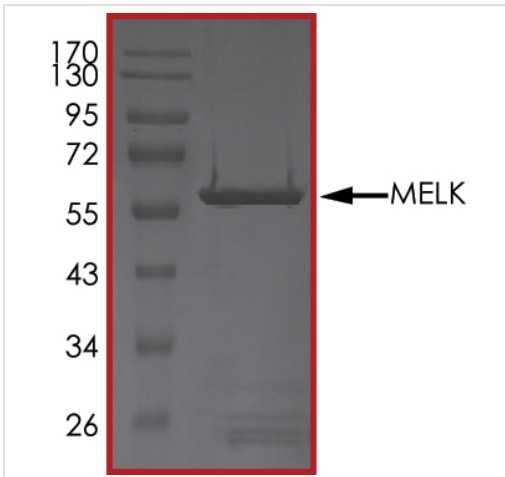
Images



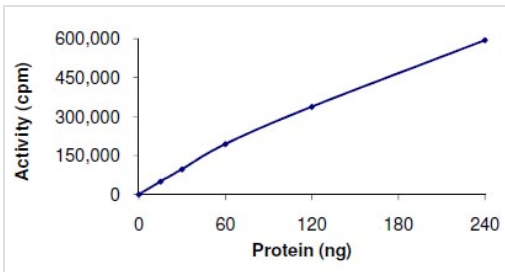
The specific activity of MELK (ab102551) was determined to be 230 nmol/min/mg as per activity assay protocol



SDS PAGE analysis of ab102551

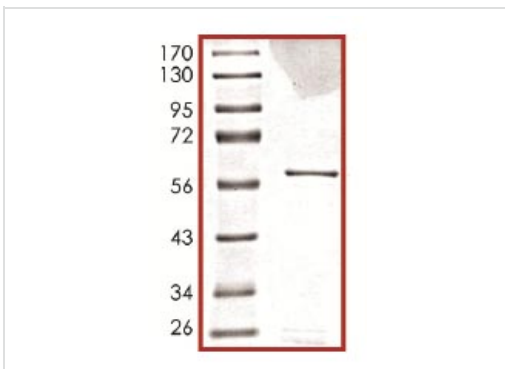


SDS-PAGE - Recombinant human MELK protein (ab102551)



The Specific activity of ab102551 was determined to be 200 nmol/min/mg.

Functional Studies - Recombinant human MELK protein (ab102551)



SDS-PAGE showing ab102551 at approximately 61kDa.

SDS-PAGE - Recombinant human MELK protein (ab102551)

Please note: All products are "FOR RESEARCH USE ONLY. NOT FOR USE IN DIAGNOSTIC PROCEDURES"

Our Abpromise to you: Quality guaranteed and expert technical support

- Replacement or refund for products not performing as stated on the datasheet

- Valid for 12 months from date of delivery
- Response to your inquiry within 24 hours

- We provide support in Chinese, English, French, German, Japanese and Spanish
- Extensive multi-media technical resources to help you
- We investigate all quality concerns to ensure our products perform to the highest standards

If the product does not perform as described on this datasheet, we will offer a refund or replacement. For full details of the Abpromise, please visit <https://www.abcam.com/abpromise> or contact our technical team.

Terms and conditions

- Guarantee only valid for products bought direct from Abcam or one of our authorized distributors