

Product datasheet

Recombinant human MERTK protein (Active) ab271471

2 Images

Description

Product name	Recombinant human MERTK protein (Active)	
Biological activity	Specific activity ≥50 pmol/min/μg. Assay was done in kinase buffer containing 1 mM DTT using Poly- (Glu4:Tyr) substrate (0.2 mg/ml) and 20 μM ATP. Reaction was done at 30°C for 45 min.	
Purity	≥ 90 % SDS-PAGE. Affinity purified.	
Expression system	Baculovirus infected Sf9 cells	
Accession	Q12866	
Protein length	Protein fragment	
Animal free	No	
Nature	Recombinant	
Species	Human	
Sequence	EDVVIDRNLL ILGKILGEGE FGSVMEGNLK QEDGTSLKVA VKTMKLDNSS QREIEEFLSE AACMKDFSHP NVIRLLGVC IEMSSQGIPKP MVILPFMKYG DLHTYLLYSR LETGPKHIPL QTLLKFMVDI ALGMEYLSNR NFLHRDLAAR NCMLRDDMTV CVADFGLSKK IYSGDYRQG RIAKMPVKWI AIESLADRVY TSKSDVWAFG VTMWEIATRG MTPYPGVQNH EMYDYLLHGH RLKQPEDCLD ELYEIMYSCW RTDPLDRPTF SVLRLQLEKL LESLPDVRNQ ADVIY	
Predicted molecular weight	60 kDa including tags	
Amino acids	578 to 872	
Tags	GST tag N-Terminus	
Additional sequence information	Genbank: NM_006343	

Specifications

Our [Abpromise guarantee](#) covers the use of **ab271471** in the following tested applications.

The application notes include recommended starting dilutions; optimal dilutions/concentrations should be determined by the end user.

Applications Flow Cytometry

SDS-PAGE

Form Liquid

Preparation and Storage

Stability and Storage

Shipped on Dry Ice. Store at -80°C. Avoid freeze / thaw cycle.

pH: 8.00

Constituents: 0.63% Tris HCl, 0.64% Sodium chloride, 0.02% Potassium chloride, 0.04% Tween, 20% Glycerol (glycerin, glycerine), 0.05% Glutathione

This product is an active protein and may elicit a biological response in vivo, handle with caution.

General Info

Function

In case of filovirus infection, seems to function as a cell entry factor.

Tissue specificity

Not expressed in normal B- and T-lymphocytes but is expressed in numerous neoplastic B- and T-cell lines.

Involvement in disease

Defects in MERTK are the cause of retinitis pigmentosa type 38 (RP38) [MIM:613862]. RP38 is a retinal dystrophy belonging to the group of pigmentary retinopathies. Retinitis pigmentosa is characterized by retinal pigment deposits visible on fundus examination and primary loss of rod photoreceptor cells followed by secondary loss of cone photoreceptors. Patients typically have night vision blindness and loss of midperipheral visual field. As their condition progresses, they lose their far peripheral visual field and eventually central vision as well.

Sequence similarities

Belongs to the protein kinase superfamily. Tyr protein kinase family. AXL/UFO subfamily.

Contains 2 fibronectin type-III domains.

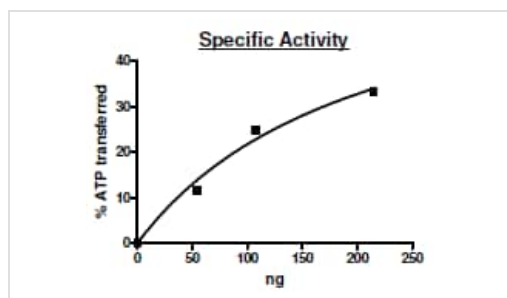
Contains 2 Ig-like C2-type (immunoglobulin-like) domains.

Contains 1 protein kinase domain.

Cellular localization

Membrane.

Images

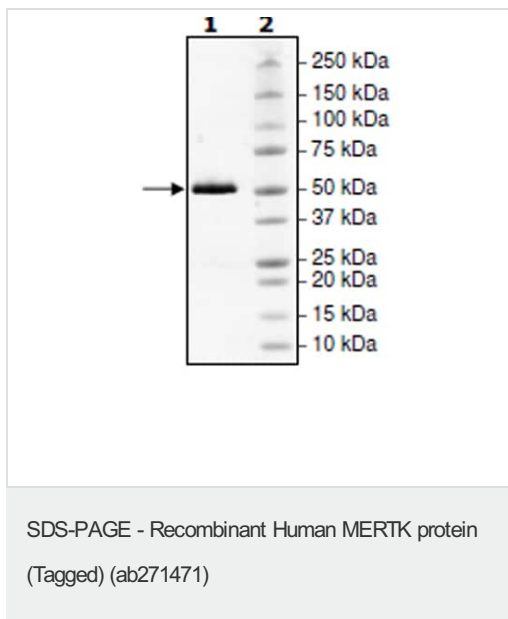


Specific activity of ab271471.

Specific activity ≥ 50 pmol/min/ μ g.

Assay was done in kinase buffer containing 1 mM DTT using Poly-(Glu4:Tyr) substrate (0.2 mg/ml) and 20 μ M ATP. Reaction was done at 30°C for 45 min.

Functional Studies - Recombinant Human MERTK protein (Tagged) (ab271471)



SDS-PAGE analysis of ab271471.

Please note: All products are "FOR RESEARCH USE ONLY. NOT FOR USE IN DIAGNOSTIC PROCEDURES"

Our Abpromise to you: Quality guaranteed and expert technical support

- Replacement or refund for products not performing as stated on the datasheet
- Valid for 12 months from date of delivery
- Response to your inquiry within 24 hours
- We provide support in Chinese, English, French, German, Japanese and Spanish
- Extensive multi-media technical resources to help you
- We investigate all quality concerns to ensure our products perform to the highest standards

If the product does not perform as described on this datasheet, we will offer a refund or replacement. For full details of the Abpromise, please visit <https://www.abcam.com/abpromise> or contact our technical team.

Terms and conditions

- Guarantee only valid for products bought direct from Abcam or one of our authorized distributors