

Product datasheet

Recombinant Human Metallothionein protein (Tagged) ab112324

1 Image

Description

Product name	Recombinant Human Metallothionein protein (Tagged)	
Expression system	Wheat germ	
Accession	P02795	
Protein length	Full length protein	
Animal free	No	
Nature	Recombinant	
Species	Human	
Sequence	MDPNCSCAAGDSCTCAGSCKCKECKCTSCKKSCCSCC PVGCAKCAQGCIC KGASDKCSCCA	
Predicted molecular weight	33 kDa including tags	
Amino acids	1 to 61	
Tags	GST tag N-Terminus	

Specifications

Our [Abpromise guarantee](#) covers the use of **ab112324** in the following tested applications.

The application notes include recommended starting dilutions; optimal dilutions/concentrations should be determined by the end user.

Applications	SDS-PAGE
	ELISA
	Western blot
Form	Liquid

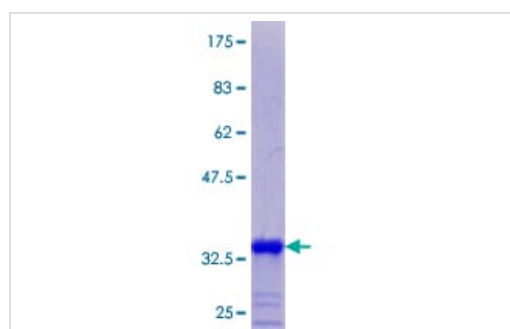
Preparation and Storage

Stability and Storage	Shipped on dry ice. Upon delivery aliquot and store at -80°C. Avoid freeze / thaw cycles. pH: 8.00 Constituents: 0.31% Glutathione, 0.79% Tris HCl
------------------------------	--

General Info

Function	Metallothioneins have a high content of cysteine residues that bind various heavy metals; these proteins are transcriptionally regulated by both heavy metals and glucocorticoids.
Sequence similarities	Belongs to the metallothionein superfamily. Type 1 family.
Domain	Class I metallothioneins contain 2 metal-binding domains: four divalent ions are chelated within cluster A of the alpha domain and are coordinated via cysteinyl thiolate bridges to 11 cysteine ligands. Cluster B, the corresponding region within the beta domain, can ligate three divalent ions to 9 cysteines.

Images



ab112324 analysed on a 12.5% SDS-PAGE gel stained with Coomassie Blue.

SDS-PAGE - Recombinant Human Metallothionein protein (Tagged) (ab112324)

Please note: All products are "FOR RESEARCH USE ONLY. NOT FOR USE IN DIAGNOSTIC PROCEDURES"

Our Abpromise to you: Quality guaranteed and expert technical support

- Replacement or refund for products not performing as stated on the datasheet
- Valid for 12 months from date of delivery
- Response to your inquiry within 24 hours
- We provide support in Chinese, English, French, German, Japanese and Spanish
- Extensive multi-media technical resources to help you
- We investigate all quality concerns to ensure our products perform to the highest standards

If the product does not perform as described on this datasheet, we will offer a refund or replacement. For full details of the Abpromise, please visit <https://www.abcam.com/abpromise> or contact our technical team.

Terms and conditions

- Guarantee only valid for products bought direct from Abcam or one of our authorized distributors