

Product datasheet

Recombinant Human METTL11A protein (His tag)  
ab211312

1 Image

Description

<b>Product name</b>	Recombinant Human METTL11A protein (His tag)	
<b>Purity</b>	> 95 % SDS-PAGE. ab211312 was purified using conventional chromatography techniques.	
<b>Expression system</b>	Escherichia coli	
<b>Accession</b>	<a href="#">Q9BV86</a>	
<b>Protein length</b>	Full length protein	
<b>Animal free</b>	No	
<b>Nature</b>	Recombinant	
<b>Species</b>	Human	
<b>Sequence</b>	MGSSHHHHHH SSGLVPRGSH MGSEFMTSEV IEDEKQFYSK AKTYWKQIPP TVDGMLGGYG HISSIDINSS RKFLQRFLRE GPNKTGTSCA LDCGAGIGRI TKRLLLPLFR EVDMDITED FLVQAKTYLG EEGKRVRYNF CCGLQDFTPE PDSYDVIWIQ WIGHLTDQH LAEFLRRCKG SLRPNQIVM KDNMAQEGVILDDVDSSVCR DLDVVRRIIC SAGLSLLAEE RQENLPDEIY HVYSFALR	
<b>Predicted molecular weight</b>	28 kDa including tags	
<b>Amino acids</b>	1 to 223	
<b>Tags</b>	His tag N-Terminus	
<b>Additional sequence information</b>	NP_054783.	

Specifications

Our [Abpromise guarantee](#) covers the use of **ab211312** in the following tested applications.

The application notes include recommended starting dilutions; optimal dilutions/concentrations should be determined by the end user.

<b>Applications</b>	SDS-PAGE
<b>Form</b>	Liquid

Preparation and Storage

## Stability and Storage

Shipped at 4°C. Store at +4°C short term (1-2 weeks). Upon delivery aliquot. Store at -20°C or -80°C. Avoid freeze / thaw cycle.

pH: 8.00

Constituents: 0.32% Tris HCl, 0.87% Sodium chloride, 10% Glycerol (glycerin, glycerine)

## General Info

### Function

Alpha-N-methyltransferase that methylates the N-terminus of target proteins containing the N-terminal motif [Ala/Pro/Ser]-Pro-Lys when the initiator Met is cleaved. Specifically catalyzes mono-, di- or tri-methylation of exposed alpha-amino group of Ala, Pro or Ser residue in the [Ala/Pro/Ser]-Pro-Lys motif. Mediates the N-terminal methylation of KLHL31, MYL2, MYL3, RB1, RCC1, RPL23A and SET. Required during mitosis for normal bipolar spindle formation and chromosome segregation.

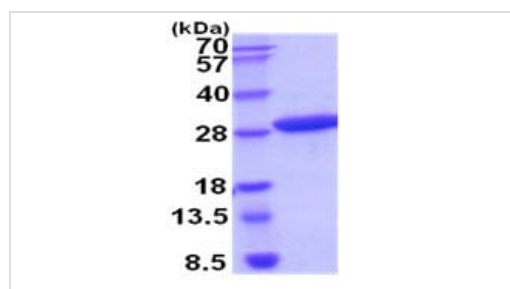
### Sequence similarities

Belongs to the methyltransferase superfamily. NTM1 family.

### Cellular localization

Nucleus. Predominantly nuclear.

## Images



15% SDS-PAGE analysis of ab211312 (3 µg).

SDS-PAGE - Recombinant Human METTL11A  
protein (His tag) (ab211312)

**Please note:** All products are "FOR RESEARCH USE ONLY. NOT FOR USE IN DIAGNOSTIC PROCEDURES"

## Our Abpromise to you: Quality guaranteed and expert technical support

- Replacement or refund for products not performing as stated on the datasheet
- Valid for 12 months from date of delivery
- Response to your inquiry within 24 hours
- We provide support in Chinese, English, French, German, Japanese and Spanish
- Extensive multi-media technical resources to help you
- We investigate all quality concerns to ensure our products perform to the highest standards

If the product does not perform as described on this datasheet, we will offer a refund or replacement. For full details of the Abpromise, please visit <https://www.abcam.com/abpromise> or contact our technical team.

## Terms and conditions

---

- Guarantee only valid for products bought direct from Abcam or one of our authorized distributors