

Product datasheet

Recombinant Human METTL14 protein ab163640

1 Image

Description

Product name	Recombinant Human METTL14 protein
Expression system	Wheat germ
Protein length	Full length protein
Animal free	No
Nature	Recombinant
Species	Human
Sequence	<p>MDSRLQEIRERQKLRQQLLAQQLGAESADSIGAVLNSKDE QREIAETRET CRASYDTSAPNAKRKYLDEGETDEDKMEEYKDELEMQQ DEENLPYEEEEY KDSSTFLKGTQSLNPHNDYCQHFVDTGHRPQNFIRDVGL ADRFEEYPKLR ELIRLKDELIAKSNTPPMYLQADIEAFDIRELTPKFDVILLEP PLEEYYR ETGITANEKCWTWDDIMKLEIDEIAAPRSFIFLWCGSGEGL DLGRVCLRK WGYRRCEDICWIKTNKNNPGKTKLDPKAVFQRTKEHCL MGIKGTVKRST DGDFIHANVDIDLITEEPEIGNIEKPVEIFHIEHFCLGRRRLH LFGRD STIRPGWLVGPTLTNSNYNAETYASYFSAPNSYLTGCTEEI ERLRPKSP PPKSKSDRGGGAPRGGGRGGTSAGRGRERNRNSNFRGE RGGFRGGRGGAHR GGFPPR</p>
Amino acids	1 to 456
Tags	GST tag N-Terminus

Specifications

Our [Abpromise guarantee](#) covers the use of **ab163640** in the following tested applications.

The application notes include recommended starting dilutions; optimal dilutions/concentrations should be determined by the end user.

Applications	ELISA
	Western blot

Form Liquid

Additional notes

Preparation and Storage

Stability and Storage Shipped on dry ice. Upon delivery aliquot and store at -80°C. Avoid freeze / thaw cycles.
pH: 8.00
Constituents: 0.31% Glutathione, 0.79% Tris HCl

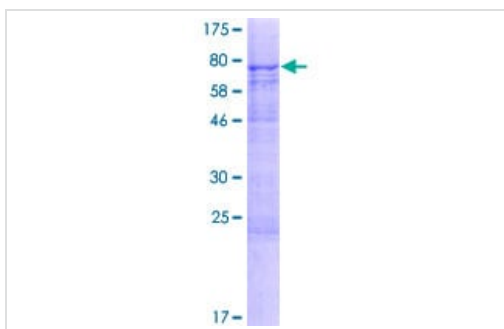
General Info

Function N6-methyltransferase that methylates adenosine residues of some mRNAs and acts as a regulator of the circadian clock and differentiation of embryonic stem cells. N6-methyladenosine (m6A), which takes place at the 5'-[AG]GAC-3' consensus sites of some mRNAs, plays a role in the efficiency of mRNA splicing, processing and mRNA stability (PubMed:24316715, PubMed:24407421, PubMed:25719671). M6A regulates the length of the circadian clock: acts as a early pace-setter in the circadian loop. M6A also acts as a regulator of mRNA stability: in embryonic stem cells (ESCs), m6A methylation of mRNAs encoding key naive pluripotency-promoting transcripts results in transcript destabilization.

Sequence similarities Belongs to the MT-A70-like family.

Cellular localization Nucleus.

Images



ab163640 on a 12.5% SDS-PAGE stained with Coomassie Blue.

SDS-PAGE - Recombinant Human METTL14 protein
(ab163640)

Please note: All products are "FOR RESEARCH USE ONLY. NOT FOR USE IN DIAGNOSTIC PROCEDURES"

Our Abpromise to you: Quality guaranteed and expert technical support

- Replacement or refund for products not performing as stated on the datasheet
- Valid for 12 months from date of delivery

- Response to your inquiry within 24 hours
- We provide support in Chinese, English, French, German, Japanese and Spanish
- Extensive multi-media technical resources to help you
- We investigate all quality concerns to ensure our products perform to the highest standards

If the product does not perform as described on this datasheet, we will offer a refund or replacement. For full details of the Abpromise, please visit <https://www.abcam.com/abpromise> or contact our technical team.

Terms and conditions

- Guarantee only valid for products bought direct from Abcam or one of our authorized distributors