

Product datasheet

Recombinant Human MFI2/MTf protein ab158883

1 Image

Description

Product name	Recombinant Human MFI2/MTf protein
Expression system	Wheat germ
Protein length	Full length protein
Animal free	No
Nature	Recombinant
Species	Human
Sequence	<pre> MEVRWCATSDPEQHKCGNMSEAFREAGIQPSLLCVRGT SADHCVQLIAAQ EADAITLDGGAYEAGKEHGLKPVVGEVYDQEVGTSYYAV AVVRRSSHVT IDTLKGVKSCHTGINRTVGWNVPGYLVESGRLSVMGCD VLKAVSDHFGG SCVPGAGETSYSESLCRLCRGDSPGEGVCDKSPLERY DYSGAFRCLAEG AGDVAFVKHSTVLENTDESPSRRQWTWRSEEEEGECPA HEEARRTMRSSA GQAWKWAPVHRPQDESDKGEFGKRAKSRDMLG </pre>
Amino acids	21 to 302
Tags	GST tag N-Terminus

Specifications

Our [Abpromise guarantee](#) covers the use of **ab158883** in the following tested applications. The application notes include recommended starting dilutions; optimal dilutions/concentrations should be determined by the end user.

Applications	Western blot ELISA
Form	Liquid
Additional notes	This product was previously labelled as MFI2.

Preparation and Storage

Stability and Storage

Shipped on dry ice. Upon delivery aliquot and store at -80°C. Avoid freeze / thaw cycles.

pH: 8.00

Constituents: 0.31% Glutathione, 0.79% Tris HCl

General Info

Function

Involved in iron cellular uptake. Seems to be internalized and then recycled back to the cell membrane. Binds a single atom of iron per subunit. Could also bind zinc.

Tissue specificity

Found predominantly in human melanomas and in certain fetal tissues; also found in liver, epithelium, umbilical chord, placenta and sweat gland ducts.

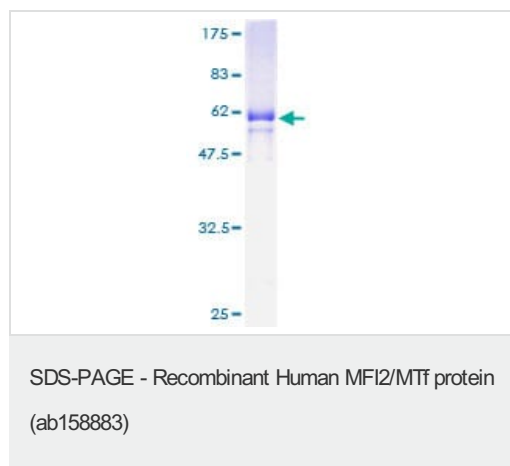
Sequence similarities

Belongs to the transferrin family.
Contains 2 transferrin-like domains.

Cellular localization

Cell membrane.

Images



ab158883 on a 12.5% SDS-PAGE stained with Coomassie Blue.

Please note: All products are "FOR RESEARCH USE ONLY. NOT FOR USE IN DIAGNOSTIC PROCEDURES"

Our Abpromise to you: Quality guaranteed and expert technical support

- Replacement or refund for products not performing as stated on the datasheet
- Valid for 12 months from date of delivery
- Response to your inquiry within 24 hours
- We provide support in Chinese, English, French, German, Japanese and Spanish
- Extensive multi-media technical resources to help you
- We investigate all quality concerns to ensure our products perform to the highest standards

If the product does not perform as described on this datasheet, we will offer a refund or replacement. For full details of the Abpromise, please visit <https://www.abcam.com/abpromise> or contact our technical team.

Terms and conditions

- Guarantee only valid for products bought direct from Abcam or one of our authorized distributors