

Product datasheet

Recombinant Human MGAT1 protein ab158886

1 Image

Overview

Product name	Recombinant Human MGAT1 protein
Protein length	Full length protein

Description

Nature	Recombinant
Source	Wheat germ
Amino Acid Sequence	
Species	Human

Sequence	<p>MLKKQSAGLVLVGAILFVAWNALLLFFWTRPAPGRP PSVSALDGD PASL TREVIRLAQDAEVELERQRGLLQQIGDALSSQRGRVPT AAPPAQPRVPVT PAPA V I P I L V I A C D R S T V R R C L D K L L H Y R P S A E L F P I I V S Q D C G H E E T A Q A I A S Y G S A V T H I R Q P D L S S I A V P P D H R K F Q G Y Y K I A R H Y R W A L G Q V F R Q F R F P A A V V E D D L E V A P D F F E Y F R A T Y P L L K A D P S L W C V S A W N D N G K E Q M V D A S R P E L L Y R T D F F P G L G W L L L A E L W A E L P K W P K A F W D D W M R R P E Q R Q G R A C I R P E I S R T M T F G R K G V S H G Q F F D Q H L K F I K L N Q Q F V H F T Q L D L S Y L Q R E A Y D R D F L A R V Y G A P Q L Q V E K V R T N D R K E L G E V R V Q Y T G R D S F K A F A K A L G V M D D L K S G V P R A G Y R G I V T F Q F R G R R V H L A P P T W E G Y D P S W N</p>
-----------------	--

Amino acids	1 to 445
Tags	proprietary tag N-Terminus

Specifications

Our [Abpromise guarantee](#) covers the use of **ab158886** in the following tested applications.

The application notes include recommended starting dilutions; optimal dilutions/concentrations should be determined by the end user.

Applications	Western blot ELISA
Form	Liquid
Additional notes	Protein concentration is above or equal to 0.05 mg/ml.

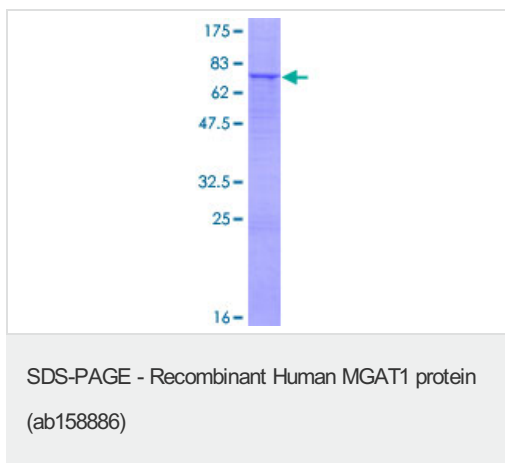
Preparation and Storage

Stability and Storage	Shipped on dry ice. Upon delivery aliquot and store at -80°C. Avoid freeze / thaw cycles. pH: 8.00 Constituents: 0.31% Glutathione, 0.79% Tris HCl
------------------------------	--

General Info

Function	Initiates complex N-linked carbohydrate formation. Essential for the conversion of high-mannose to hybrid and complex N-glycans.
Tissue specificity	Appears to be present in all tissues.
Pathway	Protein modification; protein glycosylation.
Sequence similarities	Belongs to the glycosyltransferase 13 family.
Cellular localization	Golgi apparatus membrane.

Images



ab158886 on a 12.5% SDS-PAGE stained with Coomassie Blue.

Please note: All products are "FOR RESEARCH USE ONLY AND ARE NOT INTENDED FOR DIAGNOSTIC OR THERAPEUTIC USE"

Our Abpromise to you: Quality guaranteed and expert technical support

- Replacement or refund for products not performing as stated on the datasheet
- Valid for 12 months from date of delivery
- Response to your inquiry within 24 hours
- We provide support in Chinese, English, French, German, Japanese and Spanish

- Extensive multi-media technical resources to help you
- We investigate all quality concerns to ensure our products perform to the highest standards

If the product does not perform as described on this datasheet, we will offer a refund or replacement. For full details of the Abpromise, please visit <https://www.abcam.com/abpromise> or contact our technical team.

Terms and conditions

- Guarantee only valid for products bought direct from Abcam or one of our authorized distributors