

Product datasheet

Recombinant Human Milk Fat Globule 1 protein (Tagged) ab235800

1 Image

Description

Product name	Recombinant Human Milk Fat Globule 1 protein (Tagged)	
Purity	> 90 % SDS-PAGE.	
Expression system	Escherichia coli	
Accession	Q08431	
Protein length	Full length protein	
Animal free	No	
Nature	Recombinant	
Species	Human	
Sequence	LDICSKNPCHNGGLCEEISQEVRGDVFPSYTCTCLKGYAG NHCETKCVEP LGMENGNANSQIAASSVRVTFGLQHWVPELARLNRMAGM VNAWTPSSND DNPWIQVNULLRRMWVTGVVTQGASRLASHEYLKAFKVAY SLNGHEFDLFIH DVNKKHKEFVGNWNKNAVHVNLFETPVEAQYVRLYPTSC HTACTLRFELL GCELNGCANPLGLKNNSIPDKQITASSSYKTWGLHLFSWN PSYARLDKQG NFNAWVAGSYGNDQWLQVDLGSSKEVTGIITQGARNFGS VQFVASYKVAY SNDSANWTEYQDPRTGSSKIFPGNWDNHSKKNLFETPIL ARYVRILPVA WHNRIALRLELLGC	
Predicted molecular weight	57 kDa including tags	
Amino acids	24 to 387	
Tags	His tag N-Terminus	
Additional sequence information	This product is the mature full length protein from aa 24 to 387. The signal peptide is not included. N-terminal 6xHis-SUMO-tag.	

Specifications

Our [Abpromise guarantee](#) covers the use of **ab235800** in the following tested applications.

The application notes include recommended starting dilutions; optimal dilutions/concentrations should be determined by the end user.

Applications SDS-PAGE

Form Liquid

Preparation and Storage

Stability and Storage Shipped at 4°C. Store at -20°C or -80°C. Avoid freeze / thaw cycle.

Constituents: Tris buffer, 50% Glycerol (glycerin, glycerine)

General Info

Function Plays an important role in the maintenance of intestinal epithelial homeostasis and the promotion of mucosal healing. Promotes VEGF-dependent neovascularization (By similarity). Contributes to phagocytic removal of apoptotic cells in many tissues. Specific ligand for the alpha-v/beta-3 and alpha-v/beta-5 receptors. Also binds to phosphatidylserine-enriched cell surfaces in a receptor-independent manner. Zona pellucida-binding protein which may play a role in gamete interaction. Binds specifically to rotavirus and inhibits its replication. Medin is the main constituent of aortic medial amyloid.

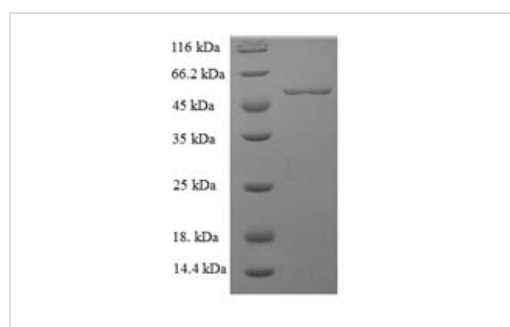
Tissue specificity Mammary epithelial cell surfaces and aortic media. Overexpressed in several carcinomas.

Sequence similarities Contains 1 EGF-like domain.
Contains 2 F5/8 type C domains.

Post-translational modifications Medin has a ragged N-terminus with minor species starting at Pro-264 and Gly-273.

Cellular localization Membrane. Secreted.

Images



SDS-PAGE - Recombinant Human Milk Fat Globule
1 protein (Tagged) (ab235800)

(Tris-Glycine gel) Discontinuous SDS-PAGE (reduced) analysis with 5% enrichment gel and 15% separation gel of ab235800.

Please note: All products are "FOR RESEARCH USE ONLY. NOT FOR USE IN DIAGNOSTIC PROCEDURES"

Our Abpromise to you: Quality guaranteed and expert technical support

-
- Replacement or refund for products not performing as stated on the datasheet
 - Valid for 12 months from date of delivery
 - Response to your inquiry within 24 hours

 - We provide support in Chinese, English, French, German, Japanese and Spanish
 - Extensive multi-media technical resources to help you
 - We investigate all quality concerns to ensure our products perform to the highest standards

If the product does not perform as described on this datasheet, we will offer a refund or replacement. For full details of the Abpromise, please visit <https://www.abcam.com/abpromise> or contact our technical team.

Terms and conditions

- Guarantee only valid for products bought direct from Abcam or one of our authorized distributors