

Product datasheet

Recombinant Human MIM protein ab160652

1 Image

Overview

<b>Product name</b>	Recombinant Human MIM protein
<b>Protein length</b>	Protein fragment

Description

<b>Nature</b>	Recombinant
<b>Source</b>	Wheat germ
<b>Amino Acid Sequence</b>	
<b>Species</b>	Human
<b>Sequence</b>	GVLPAAPPDGPEERGEHSPESPSVGEGPQGVTSMPS SMWSGQASVNPPLPG PKPSIPEEHRQAIPESAEDQEREPPSATVSPGQIPES DPADLSPRDTPQ
<b>Amino acids</b>	346 to 445
<b>Tags</b>	GST tag N-Terminus

Specifications

Our [Abpromise guarantee](#) covers the use of **ab160652** in the following tested applications.

The application notes include recommended starting dilutions; optimal dilutions/concentrations should be determined by the end user.

<b>Applications</b>	ELISA Western blot
<b>Form</b>	Liquid
<b>Additional notes</b>	Protein concentration is above or equal to 0.05 mg/ml. This product was previously labelled as MTSS1

Preparation and Storage

<b>Stability and Storage</b>	Shipped on dry ice. Upon delivery aliquot and store at -80°C. Avoid freeze / thaw cycles. pH: 8.00
------------------------------	---

Constituents: 0.31% Glutathione, 0.79% Tris HCl

## General Info

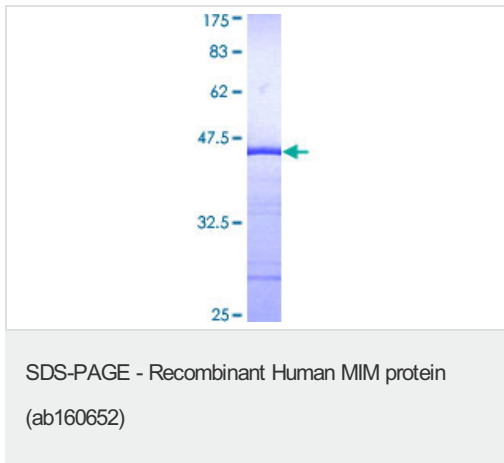
---

<b>Function</b>	May be related to cancer progression or tumor metastasis in a variety of organ sites, most likely through an interaction with the actin cytoskeleton.
<b>Tissue specificity</b>	Expressed in many tissues, including spleen, thymus, prostate, testis, uterus, colon, and peripheral blood.
<b>Sequence similarities</b>	Belongs to the MTSS1 family. Contains 1 IMD (IRSp53/MIM homology) domain. Contains 1 WH2 domain.
<b>Domain</b>	The WH2 motif at the C-terminus binds to actin monomers.
<b>Cellular localization</b>	Cytoplasm, cytoskeleton.

---

## Images

---



ab160652 on a 12.5% SDS-PAGE stained with Coomassie Blue.

**Please note:** All products are "FOR RESEARCH USE ONLY AND ARE NOT INTENDED FOR DIAGNOSTIC OR THERAPEUTIC USE"

## Our Abpromise to you: Quality guaranteed and expert technical support

---

- Replacement or refund for products not performing as stated on the datasheet
- Valid for 12 months from date of delivery
- Response to your inquiry within 24 hours
- We provide support in Chinese, English, French, German, Japanese and Spanish
- Extensive multi-media technical resources to help you
- We investigate all quality concerns to ensure our products perform to the highest standards

If the product does not perform as described on this datasheet, we will offer a refund or replacement. For full details of the Abpromise, please visit <https://www.abcam.com/abpromise> or contact our technical team.

## Terms and conditions

---

- 
- Guarantee only valid for products bought direct from Abcam or one of our authorized distributors