

Product datasheet

Recombinant Human MMP23 protein ab160066

1 Image

Description

Product name	Recombinant Human MMP23 protein
Expression system	Wheat germ
Protein length	Full length protein
Animal free	No
Nature	Recombinant
Species	Human
Sequence	<p>MGRGARVPSEAPGAGVERRWLGAALVALCLLPALVLLAR LGAPAVPAWSA AQGDVAALGLSAVPPTRVPGPLAPRRRRYTLTPARLRWD HFNLTYRILSF PRNLLSPRETRRALAAAFRMWSDVSPFSFREVAPEQPS DLRIGFYPIHNT DCLVSALHHCDFGPTGELAHAFPPHGGIHFDDSEYWWL GPTRYSWKKGV WLTDLVHVA AHEIGHALGLMHSQHGRALMHLNATLRGWK ALSQDELWGLH RLYGCLDRLFVCASWARRGFCDARRRLMKRLCPSSCDF CYEFPFPTVATT PPPPRTKTRLVPEGRNVTFRCGQKILHKKGKVYWKDQE PLEFSYPGYLA LGEAHLSIANAVNEGTYTCVVRQRVLTYSWRVRVRG</p>
Amino acids	1 to 390
Tags	GST tag N-Terminus

Specifications

Our [Abpromise guarantee](#) covers the use of **ab160066** in the following tested applications.

The application notes include recommended starting dilutions; optimal dilutions/concentrations should be determined by the end user.

Applications	ELISA
	Western blot
Form	Liquid

Additional notes

Preparation and Storage

Stability and Storage Shipped on dry ice. Upon delivery aliquot and store at -80°C. Avoid freeze / thaw cycles.
pH: 8.00
Constituents: 0.31% Glutathione, 0.79% Tris HCl

General Info

Function Protease. May regulate the surface expression of some potassium channels by retaining them in the endoplasmic reticulum.

Tissue specificity Predominantly expressed in ovary, testis and prostate.

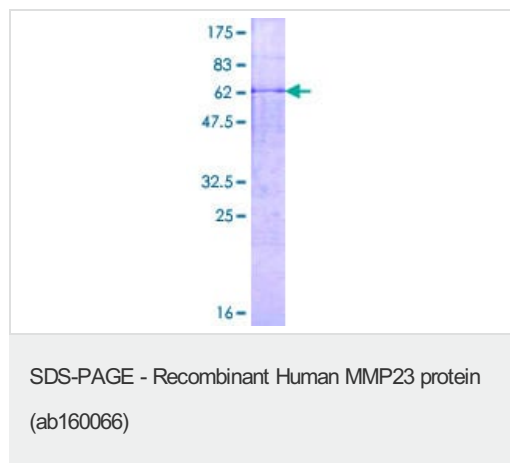
Sequence similarities Belongs to the peptidase M10A family.
Contains 1 Ig-like C2-type (immunoglobulin-like) domain.

Domain The toxin-like domain associates with, and blocks several potassium channels in the nanomolar to low micromolar range. The relative affinity is Kv1.6 > Kv1.3 > Kv1.1 = Kv3.2 > Kv1.4.

Post-translational modifications N-glycosylated.
Proteolytic cleavage might yield an active form.

Cellular localization Endoplasmic reticulum membrane. Membrane. A secreted form produced by proteolytic cleavage may also exist.

Images



ab160066 on a 12.5% SDS-PAGE stained with Coomassie Blue.

Please note: All products are "FOR RESEARCH USE ONLY. NOT FOR USE IN DIAGNOSTIC PROCEDURES"

Our Abpromise to you: Quality guaranteed and expert technical support

- Replacement or refund for products not performing as stated on the datasheet
- Valid for 12 months from date of delivery
- Response to your inquiry within 24 hours

- We provide support in Chinese, English, French, German, Japanese and Spanish
- Extensive multi-media technical resources to help you
- We investigate all quality concerns to ensure our products perform to the highest standards

If the product does not perform as described on this datasheet, we will offer a refund or replacement. For full details of the Abpromise, please visit <https://www.abcam.com/abpromise> or contact our technical team.

Terms and conditions

- Guarantee only valid for products bought direct from Abcam or one of our authorized distributors