

Product datasheet

Recombinant Human MMP28 protein ab153506

1 Image

Description

<b>Product name</b>	Recombinant Human MMP28 protein	
<b>Expression system</b>	Wheat germ	
<b>Protein length</b>	Protein fragment	
<b>Animal free</b>	No	
<b>Nature</b>	Recombinant	
<b>Species</b>	Human	
<b>Sequence</b>	LARGGLQVEPYPRSLQDWGGIPEEVSGALPRPDGSIIF RDDRWRDLQ AKLQATTSGRWATELPWMGCWHANSGSALF	
<b>Amino acids</b>	441 to 520	
<b>Tags</b>	GST tag N-Terminus	

Specifications

Our [Abpromise guarantee](#) covers the use of **ab153506** in the following tested applications. The application notes include recommended starting dilutions; optimal dilutions/concentrations should be determined by the end user.

<b>Applications</b>	Western blot ELISA
<b>Form</b>	Liquid
<b>Additional notes</b>	

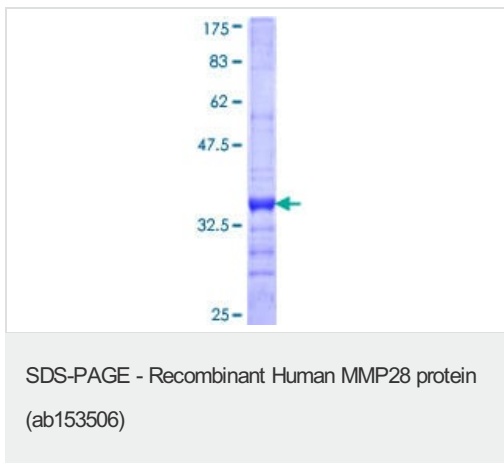
Preparation and Storage

<b>Stability and Storage</b>	Shipped on dry ice. Upon delivery aliquot and store at -80°C. Avoid freeze / thaw cycles. pH: 8.00 Constituents: 0.31% Glutathione, 0.79% Tris HCl
------------------------------	--

General Info

<b>Function</b>	Can degrade casein. Could play a role in tissues homeostasis and repair.
<b>Tissue specificity</b>	Expressed at high levels in testes and lung. Low levels are detected in kidney, pancreas and skin. Also expressed in fetal lung, brain, skeletal muscle and kidney. Expressed selectively in keratinocytes. Widely expressed in several carcinomas as well. Is up-regulated in response to injury in the skin.
<b>Sequence similarities</b>	Belongs to the peptidase M10A family. Contains 4 hemopexin-like domains.
<b>Domain</b>	The conserved cysteine present in the cysteine-switch motif binds the catalytic zinc ion, thus inhibiting the enzyme. The dissociation of the cysteine from the zinc ion upon the activation-peptide release activates the enzyme.
<b>Post-translational modifications</b>	The precursor is cleaved by a furin endopeptidase.
<b>Cellular localization</b>	Secreted > extracellular space > extracellular matrix.

## Images



ab153506 on a 12.5% SDS-PAGE stained with Coomassie Blue.

**Please note:** All products are "FOR RESEARCH USE ONLY. NOT FOR USE IN DIAGNOSTIC PROCEDURES"

## Our Abpromise to you: Quality guaranteed and expert technical support

- Replacement or refund for products not performing as stated on the datasheet
- Valid for 12 months from date of delivery
- Response to your inquiry within 24 hours
- We provide support in Chinese, English, French, German, Japanese and Spanish
- Extensive multi-media technical resources to help you
- We investigate all quality concerns to ensure our products perform to the highest standards

If the product does not perform as described on this datasheet, we will offer a refund or replacement. For full details of the Abpromise, please visit <https://www.abcam.com/abpromise> or contact our technical team.

## Terms and conditions

- Guarantee only valid for products bought direct from Abcam or one of our authorized distributors