

Product datasheet

Recombinant human MMP3 protein (Active) ab96555

3 References 1 Image

Description

Product name	Recombinant human MMP3 protein (Active)	
Biological activity	<p>ab96555 activity was measured by its ability to cleave a chromogenic peptide MMP3 substrate at room temperature.</p> <p>At a MMP3 concentration of 2.5 µg/ml, 50% cleavage was achieved at an incubation time of approximately 75 minutes.</p>	
Purity	<p>>= 98 % SDS-PAGE.</p> <p>>=98% HPLC analyses.</p>	
Endotoxin level	< 1.000 Eu/µg	
Expression system	Escherichia coli	
Accession	P08254	
Protein length	Full length protein	
Animal free	No	
Nature	Recombinant	
Species	Human	
Sequence	<pre> MRTFPGIPKW RKTHLTYRIV NYTPDLPKDA VDSAVEKALK VWEEVTPLTF SRLYEGEADI MISFAVREHG DFYFPDGPNG VLAHAYAPGP GINGDAHFDDEQWTKD TTG TNLFLVAAHE IGHSLGLFHS ANTEALMYPL YHSLDLTRF RLSQDDINGI QSLYGPPDPS PETPLVPTEP VPPEPGTPAN CDPALSFDVAV STLRGEILIF KDRHFWRKSL RKLEPELHLI SSFWPSLPSG VDAAYEVTSK DLVFIFKGNQ FWAIRGNEVR AGYPRGIHTL GFPPTVRKID AAISDKEKNK TYFFVEDKYW RFDEKRNSME PGFPAKQIAD FPGIDSKIDA VFEFEGFFYF FTGSSQLEFD PNAKKVTHTL KSNSWLNC </pre>	
Predicted molecular weight	43 kDa	
Amino acids	101 to 477	

Specifications

Our [Abpromise guarantee](#) covers the use of **ab96555** in the following tested applications.

The application notes include recommended starting dilutions; optimal dilutions/concentrations should be determined by the end user.

Applications	HPLC SDS-PAGE Functional Studies Western blot
Form	Lyophilized

Preparation and Storage

Stability and Storage Shipped at 4°C. Store at +4°C short term (1-2 weeks). Upon delivery aliquot. Store at -20°C or -80°C. Avoid freeze / thaw cycle. For long term storage it is recommended to add a carrier protein on reconstitution (0.1% HSA or BSA). Working aliquots stored with a carrier protein are stable for at least 3 months at -20°C to -80°C..

Constituents: 0.00111% Calcium chloride, 0.164% Sodium phosphate, 0.1% CHAPS, 0.002% EDTA disodium salt

This product is an active protein and may elicit a biological response in vivo, handle with caution.

Reconstitution Centrifuge the vial prior to opening. Reconstitute in water to a concentration of 0.5-1.0 mg/ml. Do not vortex.

General Info

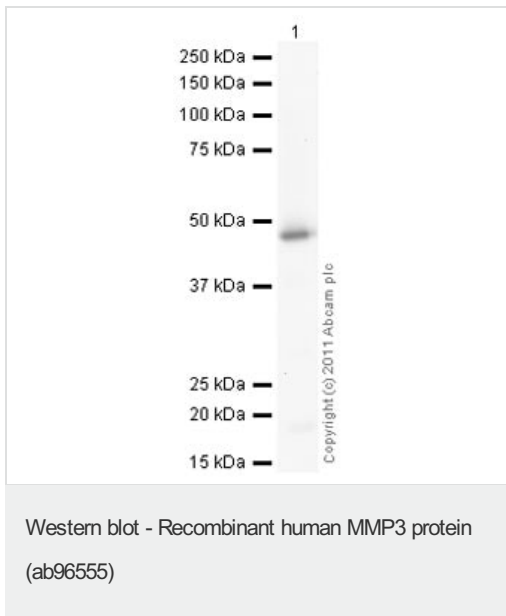
Function Can degrade fibronectin, laminin, gelatins of type I, III, IV, and V; collagens III, IV, X, and IX, and cartilage proteoglycans. Activates procollagenase.

Sequence similarities Belongs to the peptidase M10A family.
Contains 4 hemopexin-like domains.

Domain The conserved cysteine present in the cysteine-switch motif binds the catalytic zinc ion, thus inhibiting the enzyme. The dissociation of the cysteine from the zinc ion upon the activation-peptide release activates the enzyme.

Cellular localization Secreted > extracellular space > extracellular matrix.

Images



Please note: All products are "FOR RESEARCH USE ONLY. NOT FOR USE IN DIAGNOSTIC PROCEDURES"

Our Abpromise to you: Quality guaranteed and expert technical support

- Replacement or refund for products not performing as stated on the datasheet
- Valid for 12 months from date of delivery
- Response to your inquiry within 24 hours

- We provide support in Chinese, English, French, German, Japanese and Spanish
- Extensive multi-media technical resources to help you
- We investigate all quality concerns to ensure our products perform to the highest standards

If the product does not perform as described on this datasheet, we will offer a refund or replacement. For full details of the Abpromise, please visit <https://www.abcam.com/abpromise> or contact our technical team.

Terms and conditions

- Guarantee only valid for products bought direct from Abcam or one of our authorized distributors