

Product datasheet

Recombinant Human MORC3 protein (Tagged)
ab225648

1 Image

Description

Product name	Recombinant Human MORC3 protein (Tagged)	
Purity	> 90 % SDS-PAGE.	
Expression system	Escherichia coli	
Accession	Q14149	
Protein length	Protein fragment	
Animal free	No	
Nature	Recombinant	
Species	Human	
Sequence	<pre> MAAQPPRGIRLSALCPKFLHTNSTSHTWPFSVAVELID NAYDPDVNAKQI WIDKTVINDHICLTFTDNGNGMTSDKLHKMLSFGFSDK VTMNGHVPVGLY GNGFKSGSMRLGKDAIFTKNGESMSVGLLSQTYLEVI KAEHVVPMAF NKHRQMINLAESKASLAAILEHSLFSTEQKLLAELDAIIG KKGTRIIWN LRSYKNATEFDFEKDYDIRIPEDLDEITGKKGYKKQER MDQIAPESDYS LRAYCSILYLKPRMQIILRGQKVKTQLVSKSLAYIERDVY </pre>	
Predicted molecular weight	49 kDa including tags	
Amino acids	1 to 290	
Tags	His tag N-Terminus	
Additional sequence information	N-terminal 6xHis-SUMO tag.	

Specifications

Our [Abpromise guarantee](#) covers the use of **ab225648** in the following tested applications.

The application notes include recommended starting dilutions; optimal dilutions/concentrations should be determined by the end user.

Applications	SDS-PAGE
---------------------	----------

Form Liquid

Preparation and Storage

Stability and Storage Shipped at 4°C. Upon delivery aliquot. Store at -20°C or -80°C. Avoid freeze / thaw cycle.
Constituents: 50% Glycerol, Tris buffer

General Info

Function Nuclear factor which forms MORC3-NBs (nuclear bodies) via an ATP-dependent mechanism (PubMed:20501696). Sumoylated MORC3-NBs can also associate with PML-NBs (PubMed:20501696). Recruits TP53 and SP100 to PML-NBs, thus regulating TP53 activity (PubMed:17332504). Binds RNA in vitro (PubMed:11927593). May be required for influenza A transcription during viral infection (PubMed:26202233).

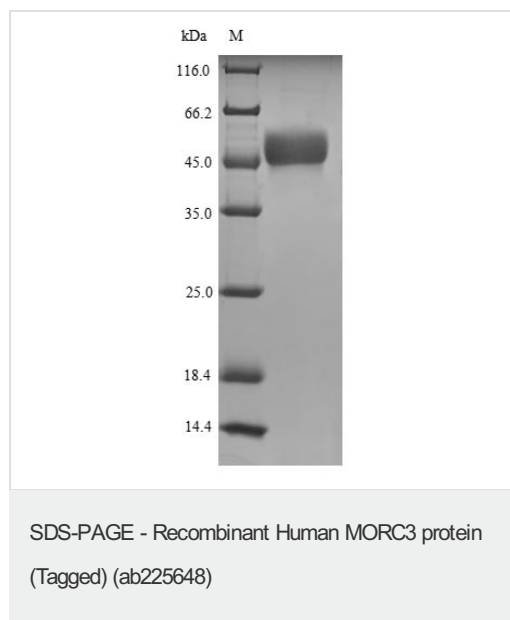
Tissue specificity Expressed in heart, placenta, skeletal muscle, brain, pancreas, lung, liver, but not kidney.

Sequence similarities Contains 1 CW-type zinc finger.

Post-translational modifications Sumoylation is involved in interaction with PML and localization to PML nuclear bodies.

Cellular localization Nucleus, nucleoplasm. Nucleus matrix. Nucleus, PML body. Also found in PML-independent nuclear bodies. Localization to nuclear bodies is ATP-dependent.

Images



Discontinuous SDS-PAGE (Tris-Glycine gel) (reduced) with 5% enrichment gel and 15% separation gel.

Please note: All products are "FOR RESEARCH USE ONLY. NOT FOR USE IN DIAGNOSTIC PROCEDURES"

Our Abpromise to you: Quality guaranteed and expert technical support

- Replacement or refund for products not performing as stated on the datasheet

- Valid for 12 months from date of delivery
- Response to your inquiry within 24 hours

- We provide support in Chinese, English, French, German, Japanese and Spanish
- Extensive multi-media technical resources to help you
- We investigate all quality concerns to ensure our products perform to the highest standards

If the product does not perform as described on this datasheet, we will offer a refund or replacement. For full details of the Abpromise, please visit <https://www.abcam.com/abpromise> or contact our technical team.

Terms and conditions

- Guarantee only valid for products bought direct from Abcam or one of our authorized distributors