

Product datasheet

Recombinant Human Morg1 protein ab164559

1 Image

Overview

Product name	Recombinant Human Morg1 protein
Protein length	Protein fragment

Description

Nature	Recombinant
Source	Wheat germ
Amino Acid Sequence	
Species	Human
Sequence	VDGRVRRYDLRMGQLFSDYVGSPITCTCF SRDGQCTL VSSLDSTLRLLDK DTGELLGEYKGHKNQEYKLDCCLSERDTHVSCSED GKVFFW
Amino acids	171 to 262
Tags	GST tag N-Terminus

Specifications

Our [Abpromise guarantee](#) covers the use of **ab164559** in the following tested applications. The application notes include recommended starting dilutions; optimal dilutions/concentrations should be determined by the end user.

Applications	ELISA Western blot
Form	Liquid
Additional notes	Protein concentration is above or equal to 0.05 mg/ml.

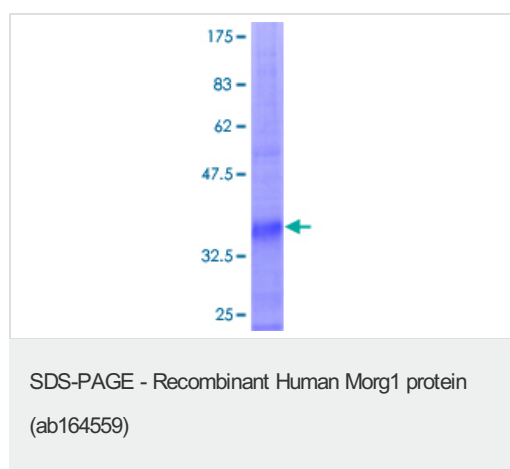
Preparation and Storage

Stability and Storage	Shipped on dry ice. Upon delivery aliquot and store at -80°C. Avoid freeze / thaw cycles. pH: 8.00 Constituents: 0.31% Glutathione, 0.79% Tris HCl
------------------------------	--

General Info

Function	Molecular scaffold protein for various multimeric protein complexes. Acts as a module in the assembly of a multicomponent scaffold for the ERK pathway, linking ERK responses to specific agonists. At low concentrations it enhances ERK activation, whereas high concentrations lead to the inhibition of ERK activation. Also involved in response to hypoxia by acting as a negative regulator of HIF 1A/HIF-1-alpha via its interaction with EGLN3/PHD3. May promote degradation of HIF 1A. May act by recruiting signaling complexes to a specific upstream activator (By similarity). May also be involved in pre-mRNA splicing.
Sequence similarities	Belongs to the WD repeat MORG1 family. Contains 7 WD repeats.
Cellular localization	Cytoplasm. Nucleus. Predominantly cytoplasmic (By similarity). Partially nuclear.

Images



ab164559 on a 12.5% SDS-PAGE stained with Coomassie Blue.

Please note: All products are "FOR RESEARCH USE ONLY. NOT FOR USE IN DIAGNOSTIC PROCEDURES"

Our Abpromise to you: Quality guaranteed and expert technical support

- Replacement or refund for products not performing as stated on the datasheet
- Valid for 12 months from date of delivery
- Response to your inquiry within 24 hours
- We provide support in Chinese, English, French, German, Japanese and Spanish
- Extensive multi-media technical resources to help you
- We investigate all quality concerns to ensure our products perform to the highest standards

If the product does not perform as described on this datasheet, we will offer a refund or replacement. For full details of the Abpromise, please visit <https://www.abcam.com/abpromise> or contact our technical team.

Terms and conditions

- Guarantee only valid for products bought direct from Abcam or one of our authorized distributors