

Product datasheet

Recombinant Human MPP7 protein ab165495

1 Image

Overview

Product name	Recombinant Human MPP7 protein
Protein length	Full length protein

Description

Nature	Recombinant
Source	Wheat germ
Amino Acid Sequence	
Species	Human
Sequence	<p>MPALSTGSGSDTGLYELLAALPAQLQPHVDSQEDLTF LWDMFGEKSLHSL VKIHEKLYHYEKQSPVPIHGAAALADDLAEELQNKPL NSEIRELLKLLS KPNVKALLSVHDTVAQKNYDPVLPMPEDIDDEEDSV KIIRLVKNREPLG ATIKKDEQTGAIVARIMRGGAADRSGLIHVGDELREVN GIPVEDKRPEE IIQILAQSQGAIITFKIIPGSKEETPSKEGKMFICALFDYNP NEDKAIPCK EAGLSFKKGDILQIMSQDDATWWQAKHEADANPRAG LIPSKHFQERRLAL RRPEILVQPLKVSNRKSSGFRRSFRLSRKDKKTNKSM YECKKSDQYDTAD VPTYEEVTPYRRQTNEKYRLVVLVGPVGVGLNELKRKL LISDTQHYGVTV PHTTRARRSQESDGVEYIFISKHLFETDVQNNKFIEYGE YKNNYYGTSID SVRSVLAKNKVCLLDVQPHTVKHLRLEFKPYVIFIKPP SIERLRETRKN AKIISRDDQGAAKPFTEEDFQEMIKSAQIMESQYGH FDKIIINDDLTV AFNELKTTFDKLETETHWVPVSWLHS</p>
Amino acids	1 to 576
Tags	GST tag N-Terminus

Specifications

Our [Abpromise guarantee](#) covers the use of **ab165495** in the following tested applications.

The application notes include recommended starting dilutions; optimal dilutions/concentrations should be determined by the end user.

Applications	ELISA Western blot
Form	Liquid
Additional notes	Protein concentration is above or equal to 0.05 mg/ml.

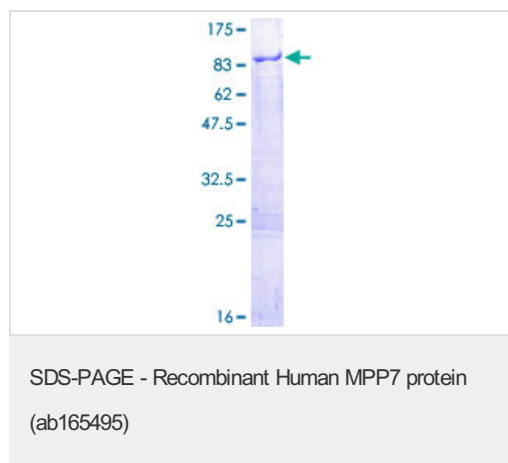
Preparation and Storage

Stability and Storage	Shipped on dry ice. Upon delivery aliquot and store at -80°C. Avoid freeze / thaw cycles. pH: 8.00 Constituents: 0.31% Glutathione, 0.79% Tris HCl
------------------------------	--

General Info

Function	Acts as an important adapter that promotes epithelial cell polarity and tight junction formation via its interaction with DLG1. Involved in the assembly of protein complexes at sites of cell-cell contact.
Sequence similarities	Belongs to the MAGUK family. Contains 1 guanylate kinase-like domain. Contains 2 L27 domains. Contains 1 PDZ (DHR) domain. Contains 1 SH3 domain.
Cellular localization	Membrane. Cell junction > tight junction. Cell junction > adherens junction.

Images



ab165495 on a 12.5% SDS-PAGE stained with Coomassie Blue.

Please note: All products are "FOR RESEARCH USE ONLY AND ARE NOT INTENDED FOR DIAGNOSTIC OR THERAPEUTIC USE"

Our Abpromise to you: Quality guaranteed and expert technical support

- Replacement or refund for products not performing as stated on the datasheet
- Valid for 12 months from date of delivery
- Response to your inquiry within 24 hours

- We provide support in Chinese, English, French, German, Japanese and Spanish
- Extensive multi-media technical resources to help you
- We investigate all quality concerns to ensure our products perform to the highest standards

If the product does not perform as described on this datasheet, we will offer a refund or replacement. For full details of the Abpromise, please visit <https://www.abcam.com/abpromise> or contact our technical team.

Terms and conditions

- Guarantee only valid for products bought direct from Abcam or one of our authorized distributors