

Product datasheet

Recombinant Human MS4A2 protein ab158422

1 Image

Overview

Product name	Recombinant Human MS4A2 protein
Protein length	Full length protein

Description

Nature	Recombinant
Source	Wheat germ
Amino Acid Sequence	
Species	Human
Sequence	<p>MDTESNRRANLALPQEPSSVPAFEVLEISPQEVSSGR LLKSASSPPLHTW LTVLKKEQEFLGVTQILTAMICLCFGTVVCSVLDISHIEG DIFSSFKAGY PFWGAIFFSISGMLSIIISERRNATYLVRGSLGANTASSIA GGTGITILII NLKKSLAYIHIHSCQKFFETKCFMASFSTEMVMMLFLTI LGLGSAVSLT ICGAGEELKGNKVPEDRVYEELNIYSATYSELEDPGEM SPPIDL</p>
Amino acids	1 to 244
Tags	GST tag N-Terminus

Specifications

Our [Abpromise guarantee](#) covers the use of **ab158422** in the following tested applications.

The application notes include recommended starting dilutions; optimal dilutions/concentrations should be determined by the end user.

Applications	ELISA Western blot
Form	Liquid
Additional notes	Protein concentration is above or equal to 0.05 mg/ml.

Preparation and Storage

Stability and Storage

Shipped on dry ice. Upon delivery aliquot and store at -80°C. Avoid freeze / thaw cycles.

pH: 8.00

Constituents: 0.31% Glutathione, 0.79% Tris HCl

General Info

Function

High affinity receptor that binds to the Fc region of immunoglobulins epsilon. Aggregation of FCER1 by multivalent antigens is required for the full mast cell response, including the release of preformed mediators (such as histamine) by degranulation and de novo production of lipid mediators and cytokines. Also mediates the secretion of important lymphokines. Binding of allergen to receptor-bound IgE leads to cell activation and the release of mediators responsible for the manifestations of allergy.

Tissue specificity

Found on the surface of mast cells and basophils.

Sequence similarities

Belongs to the MS4A family.

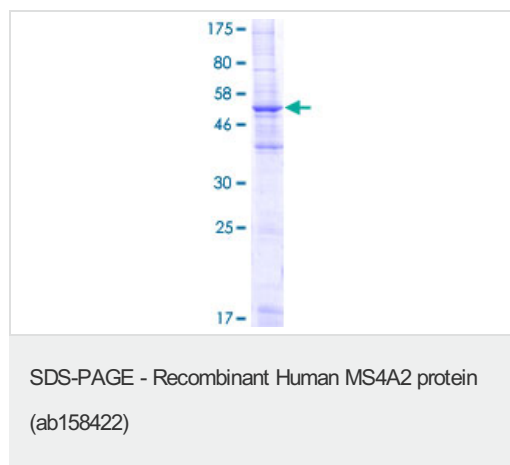
Post-translational modifications

Phosphorylated on tyrosine residues by LYN.

Cellular localization

Membrane.

Images



ab158422 on a 12.5% SDS-PAGE stained with Coomassie Blue.

Please note: All products are "FOR RESEARCH USE ONLY AND ARE NOT INTENDED FOR DIAGNOSTIC OR THERAPEUTIC USE"

Our Abpromise to you: Quality guaranteed and expert technical support

- Replacement or refund for products not performing as stated on the datasheet
- Valid for 12 months from date of delivery
- Response to your inquiry within 24 hours
- We provide support in Chinese, English, French, German, Japanese and Spanish
- Extensive multi-media technical resources to help you
- We investigate all quality concerns to ensure our products perform to the highest standards

If the product does not perform as described on this datasheet, we will offer a refund or replacement. For full details of the Abpromise, please visit <https://www.abcam.com/abpromise> or contact our technical team.

Terms and conditions

- Guarantee only valid for products bought direct from Abcam or one of our authorized distributors