

Product datasheet

Recombinant Human MTA2/PID protein ab160388

1 Image

Overview

Product name	Recombinant Human MTA2/PID protein
Protein length	Full length protein

Description

Nature	Recombinant
Source	Wheat germ
Amino Acid Sequence	
Species	Human

Sequence	<p>MAANMYRVGDWYFENSSSNPYLVRRIEELNKTANGN VEAKVVCLFRRRD ISSLNSLADSNAREFEEESKQPGVSEQQRHQLKHRE LFLSRQFESLPAT HIRGKCSVTLLNETDILSQYLEKEDCFFYSLVFDPVQKT LLADQGEIRVG CKYQAEIPDRLVEGESDNRNQQKMEMKVWDPDNPLT DRQIDQFLVVARAV GTFARALDCSSSIRQPSLHMSAAAASRDITLFHAMDTL QRNGYDLAKAMS TLVPQGGPVLCRDEMEEWSASEAMLFEEALEKYGKD FNDIRQDFLPWKSL ASIVQFYMWKTTDRYIQQKRLKAAEADSKLKQVYIPTY TKPNPNQIISV GSKPGMNGAGFQKGLTCESCHTTQSAQWYAWGPPN MQCRLCASCWYWKK YGGLKTPTQLEGATRGTTEPHSRGHLRPEAQSLSPY TTSANRAKLLAKN RQTFLLQTTKLTRLARRMCRDLLQPRRAARRPYAPINA NAIKAECSIRLP KAAKTPKIHPLVRLPLATVKDLVAQAPLKPCTPRGTK TPINRNQLSQN RGLGGIMVKRAYETMAGAGVPFSAAGRPLASGIRSSS QPAKRQKLNPAD APNPVVFVATKDTRALRKALTHLEMRAARRPNLPLK VKPTLIAVRPPVP LPAPSHPASTNEPMLD</p>
-----------------	---

Amino acids	1 to 668
Tags	GST tag N-Terminus

Specifications

Our [Abpromise guarantee](#) covers the use of **ab160388** in the following tested applications.

The application notes include recommended starting dilutions; optimal dilutions/concentrations should be determined by the end user.

Applications	Western blot ELISA
Form	Liquid
Additional notes	Protein concentration is above or equal to 0.05 mg/ml. This product was previously labelled as MTA2

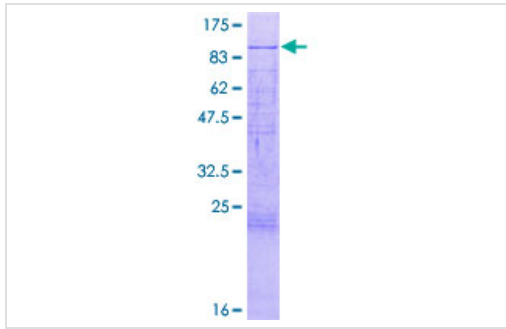
Preparation and Storage

Stability and Storage	Shipped on dry ice. Upon delivery aliquot and store at -80°C. Avoid freeze / thaw cycles. pH: 8.00 Constituents: 0.31% Glutathione, 0.79% Tris HCl
------------------------------	--

General Info

Function	May be involved in the regulation of gene expression as repressor and activator. The repression might be related to covalent modification of histone proteins.
Tissue specificity	Widely expressed.
Sequence similarities	Contains 1 BAH domain. Contains 1 ELM2 domain. Contains 1 GATA-type zinc finger. Contains 1 SANT domain.
Cellular localization	Nucleus.

Images



ab160388 on a 12.5% SDS-PAGE stained with Coomassie Blue.

SDS-PAGE - Recombinant Human MTA2/PID protein (ab160388)

Please note: All products are "FOR RESEARCH USE ONLY. NOT FOR USE IN DIAGNOSTIC PROCEDURES"

Our Abpromise to you: Quality guaranteed and expert technical support

- Replacement or refund for products not performing as stated on the datasheet
- Valid for 12 months from date of delivery
- Response to your inquiry within 24 hours

- We provide support in Chinese, English, French, German, Japanese and Spanish
- Extensive multi-media technical resources to help you
- We investigate all quality concerns to ensure our products perform to the highest standards

If the product does not perform as described on this datasheet, we will offer a refund or replacement. For full details of the Abpromise, please visit <https://www.abcam.com/abpromise> or contact our technical team.

Terms and conditions

- Guarantee only valid for products bought direct from Abcam or one of our authorized distributors