

Product datasheet

Recombinant Human Mutarotase protein ab98150

1 Image

Overview

Product name	Recombinant Human Mutarotase protein
Protein length	Full length protein

Description

Nature	Recombinant
Source	Escherichia coli
Amino Acid Sequence	
Accession	Q96C23
Species	Human

Sequence	<p>MGSSHHHHHSSGLVPRGSHMASVTRAVFGELPSG GGTVEKFQLQSDLLR VDIISWGCTITALEVKDRQGRASDVVLGFAELEGYLQK QPYFGAVIGRVA NRIAKGTFKVDGKEYHLAINKEPNSLHGGVRFDFKVL WTPRVLSNGVQFS RISPDGEEGYPGELKVWVWVYTLDDGGELVNYRAQASQA TPVNLTNHSYFN LAGQASPNINDHEVTIEADTYLPVDETLIPTGEVAPVQG TAFDLRKPVEL GKHLQDFHLNGFDHNFCLKGSKEKHFCARVHHAASG RVLEVYTTQPGVQF YTGNFLDGTLKGKNGAVYPKHSGFCLETQNWPDVN QPRFPPVLLRPGEE YDHTTWFKFSVA</p>
-----------------	--

Molecular weight	40 kDa including tags
Amino acids	1 to 342
Tags	His tag N-Terminus

Specifications

Our [Abpromise guarantee](#) covers the use of **ab98150** in the following tested applications.

The application notes include recommended starting dilutions; optimal dilutions/concentrations should be determined by the end user.

Applications	Mass Spectrometry
---------------------	-------------------

	SDS-PAGE
Mass spectrometry	MALDI-TOF
Purity	> 95 % SDS-PAGE. ab98150 was purified by using conventional chromatography.
Form	Liquid

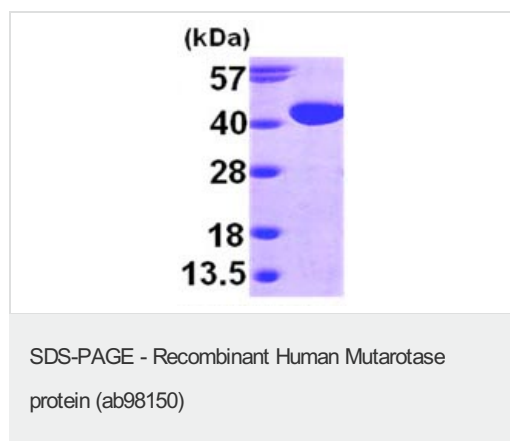
Preparation and Storage

Stability and Storage	Shipped at 4°C. Store at +4°C short term (1-2 weeks). Upon delivery aliquot. Store at -20°C or -80°C. Avoid freeze / thaw cycle. pH: 8.00 Constituents: 0.316% Tris HCl, 10% Glycerol
------------------------------	---

General Info

Function	Mutarotase converts alpha-aldose to the beta-anomer. It is active on D-glucose, L-arabinose, D-xylose, D-galactose, maltose and lactose.
Pathway	Carbohydrate metabolism; hexose metabolism.
Sequence similarities	Belongs to the aldose epimerase family.
Cellular localization	Cytoplasm.

Images



15% SDS-PAGE analysis of 3µg ab98150

Please note: All products are "FOR RESEARCH USE ONLY AND ARE NOT INTENDED FOR DIAGNOSTIC OR THERAPEUTIC USE"

Our Abpromise to you: Quality guaranteed and expert technical support

- Replacement or refund for products not performing as stated on the datasheet
- Valid for 12 months from date of delivery
- Response to your inquiry within 24 hours
- We provide support in Chinese, English, French, German, Japanese and Spanish

- Extensive multi-media technical resources to help you
- We investigate all quality concerns to ensure our products perform to the highest standards

If the product does not perform as described on this datasheet, we will offer a refund or replacement. For full details of the Abpromise, please visit <https://www.abcam.com/abpromise> or contact our technical team.

Terms and conditions

- Guarantee only valid for products bought direct from Abcam or one of our authorized distributors