

Product datasheet

Recombinant Human Ndufs1 protein ab152559

1 Image

Description

<b>Product name</b>	Recombinant Human Ndufs1 protein
<b>Expression system</b>	Wheat germ
<b>Accession</b>	<a href="#">P28331</a>
<b>Protein length</b>	Full length protein
<b>Animal free</b>	No
<b>Nature</b>	Recombinant
<b>Species</b>	Human

Sequence

MLRIPVRKALVGLSKSPKGCVRRTATAASNIEVFVDG  
 QSVMVEPGTTVL  
 QACEKVGMQIPRFCYHERLSVAGNCRMCLVEIEKAPK  
 VVAACAMPVMKGW  
 NILTNSEKSKKAREGVMFLLANHPLDCPICDQGGEC  
 DLQDQSMFMGNDR  
 SRFLEGKRAVEDKNIGPLVKTIMTRCIQCTRCIRFASEIA  
 GVDDLGTGR  
 GNDMQVGTIEKMFMSSELSGNIIDICPVGALTSKPYAFT  
 AQPWETRKTES  
 IDVMDAVGSNIVVSTRTGEVMRILPRMHEDINEEWISDK  
 TRFAYDGLKRQ  
 RLTEPMVRNEKGLLTYTSWEDALSRVAGMLQSFQ GK  
 DVAAIAGGLVDAEA  
 LVALKDLLNRVDSDTLCTEEVFPTAGAGTDLRSNYLLN  
 TTIAGVEEADV  
 LLVGTNPRFEAPLFNARIRKSWLHNDLKVALIGSPVDL  
 TYTYDHLG DSPK  
 ILQDIASGSHPFSSQVLKEAKKPMVVLGSSALQRNDGA  
 AILAAVSSIAQKI  
 RMTSGVTGDWKVMNILHRIASQVAALDLGYKPGVEAIR  
 KNPPKVLFLGA  
 DGGCITRQDLPKDCFIYQGHGHDVGAPIADVILPGAAY  
 TEKSATYVNTE  
 GRAQQTKVAVTPPGLAREDWKIIRALSEIAGMTLPYDTL  
 DQVRNRLEEVS  
 PNLVRYDDIEGANYFQQANELSKLVNQQLLADPLVPP  
 QLTIKDFYMTDSI

<b>Predicted molecular weight</b>	106 kDa including tags
<b>Amino acids</b>	1 to 727

## Specifications

---

Our [Abpromise guarantee](#) covers the use of **ab152559** in the following tested applications.

The application notes include recommended starting dilutions; optimal dilutions/concentrations should be determined by the end user.

<b>Applications</b>	ELISA
	SDS-PAGE
	Western blot

<b>Form</b>	Liquid
-------------	--------

## Additional notes

## Preparation and Storage

---

<b>Stability and Storage</b>	Shipped on dry ice. Upon delivery aliquot and store at -80°C. Avoid freeze / thaw cycles. pH: 8.00 Constituents: 0.31% Glutathione, 0.79% Tris HCl
------------------------------	--

## General Info

---

<b>Function</b>	Core subunit of the mitochondrial membrane respiratory chain NADH dehydrogenase (Complex I) that is believed to belong to the minimal assembly required for catalysis. Complex I functions in the transfer of electrons from NADH to the respiratory chain. The immediate electron acceptor for the enzyme is believed to be ubiquinone (By similarity). This is the largest subunit of complex I and it is a component of the iron-sulfur (IP) fragment of the enzyme. It may form part of the active site crevice where NADH is oxidized.
-----------------	---

<b>Involvement in disease</b>	Defects in <i>NDUFS1</i> are a cause of mitochondrial complex I deficiency (MT-C1D) [MIM:252010]. A disorder of the mitochondrial respiratory chain that causes a wide range of clinical disorders, from lethal neonatal disease to adult-onset neurodegenerative disorders. Phenotypes include macrocephaly with progressive leukodystrophy, non-specific encephalopathy, cardiomyopathy, myopathy, liver disease, Leigh syndrome, Leber hereditary optic neuropathy, and some forms of Parkinson disease.
-------------------------------	---

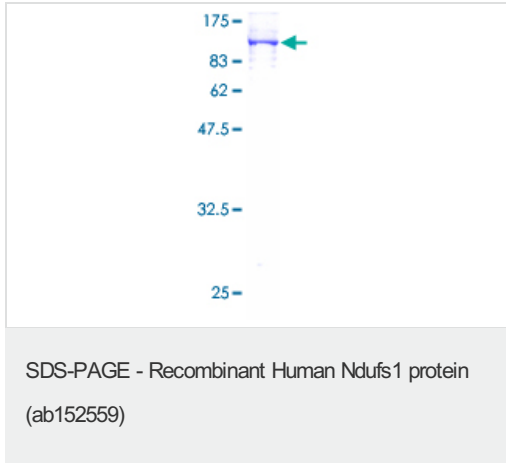
<b>Sequence similarities</b>	Belongs to the complex I 75 kDa subunit family. Contains 1 2Fe-2S ferredoxin-type domain.
------------------------------	--

<b>Cellular localization</b>	Mitochondrion inner membrane.
------------------------------	-------------------------------

---

## Images

---



12.5% SDS-PAGE analysis of ab152559 stained with Coomassie Blue.

**Please note:** All products are "FOR RESEARCH USE ONLY. NOT FOR USE IN DIAGNOSTIC PROCEDURES"

### Our Abpromise to you: Quality guaranteed and expert technical support

---

- Replacement or refund for products not performing as stated on the datasheet
- Valid for 12 months from date of delivery
- Response to your inquiry within 24 hours
- We provide support in Chinese, English, French, German, Japanese and Spanish
- Extensive multi-media technical resources to help you
- We investigate all quality concerns to ensure our products perform to the highest standards

If the product does not perform as described on this datasheet, we will offer a refund or replacement. For full details of the Abpromise, please visit <https://www.abcam.com/abpromise> or contact our technical team.

### Terms and conditions

---

- Guarantee only valid for products bought direct from Abcam or one of our authorized distributors