

Product datasheet

Recombinant Human Nectin-4 protein ab164347

1 Image

Description

Product name	Recombinant Human Nectin-4 protein
Expression system	Wheat germ
Protein length	Full length protein
Animal free	No
Nature	Recombinant
Species	Human
Sequence	<p>MPLSLGAEMWGPEAWLLLLLLLLASFTGRCPAGELETSDV VTVVLGQDAKL PCFYRGDSGEQVGQVAWARVDAGEGAQELALLHSKYGL HVSPAYEGRVEQ PPPPRNPLDGSVLLRNAVQADEGEYECRVSTFPAGSFQA RLRLRVLVPPL PSLNPGPALEEGQGLTLAASCTAEGSPAPSVTWDTEVKG TTSSRSFKHSR SAAVTSEFHLVPSRSMNGQPLTCVVSHPGLLQDQRITHIL HVSFLAEASV RGLDQNLWHIGREGAMKCLSEGQPPPSYNWTRLDGPL PSGVRVDGDTL GFPPLTTEHSGIVCHVSNEFSSRDSQVTDVLDPQEDS GKQVDLVSASV VVVGVIAALLFCLLVVVVLMSTRYHRRKAQQMTQKYEEEL TLTRENSIRR LSHHTDPRSQPPEESVGLRAEGHPDSLKDNSSCSVMSE EPEGRSYSTLTT VREIETQTELLSPGSGRAEEEEEDQDEGIKQAMNHFVQEN GTLRAKPTGNG MYNGRGHLV</p>
Amino acids	1 to 510
Tags	GST tag N-Terminus

Specifications

Our [Abpromise guarantee](#) covers the use of **ab164347** in the following tested applications.

The application notes include recommended starting dilutions; optimal dilutions/concentrations should be determined by the end user.

Applications	ELISA Western blot
Form	Liquid
Additional notes	

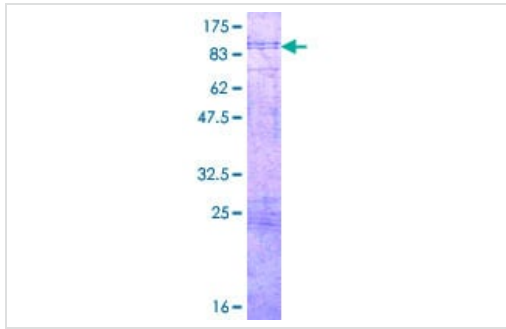
Preparation and Storage

Stability and Storage	Shipped on dry ice. Upon delivery aliquot and store at -80°C. Avoid freeze / thaw cycles. pH: 8.00 Constituents: 0.31% Glutathione, 0.79% Tris HCl
------------------------------	--

General Info

Function	Seems to be involved in cell adhesion through trans-homophilic and -heterophilic interactions, the latter including specifically interactions with PVRL2/nectin-1. Does not act as receptor for alpha-herpesvirus entry into cells.
Tissue specificity	Predominantly expressed in placenta. Not detected in normal breast epithelium but expressed in breast carcinoma.
Involvement in disease	Defects in PVRL4 are the cause of ectodermal dysplasia-syndactyly syndrome type 1 (EDSS1) [MIM:613573]. EDSS1 is a form of ectodermal dysplasia, a heterogeneous group of disorders due to abnormal development of two or more ectodermal structures. EDSS1 is characterized by the association of hair and teeth abnormalities with cutaneous syndactyly of the hands and/or feet. Hair morphologic abnormalities include twists at irregular intervals (pili torti) and swelling along the shafts, particularly associated with areas of breakage. Dental findings consist of abnormally widely spaced teeth, with peg-shaped and conical crowns. Patients have normal sweating.
Sequence similarities	Belongs to the nectin family. Contains 2 Ig-like C2-type (immunoglobulin-like) domains. Contains 1 Ig-like V-type (immunoglobulin-like) domain.
Post-translational modifications	The soluble form is produced by proteolytic cleavage at the cell surface (shedding), probably by ADAM17/TACE.
Cellular localization	Cell membrane. Cell junction > adherens junction. Colocalizes with MLLT4 at cadherin-based adherens junctions and Secreted. The secreted form is found in breast tumor patients.

Images



ab164347 on a 12.5% SDS-PAGE stained with Coomassie Blue.

SDS-PAGE - Recombinant Human Nectin-4 protein
(ab164347)

Please note: All products are "FOR RESEARCH USE ONLY. NOT FOR USE IN DIAGNOSTIC PROCEDURES"

Our Abpromise to you: Quality guaranteed and expert technical support

- Replacement or refund for products not performing as stated on the datasheet
- Valid for 12 months from date of delivery
- Response to your inquiry within 24 hours

- We provide support in Chinese, English, French, German, Japanese and Spanish
- Extensive multi-media technical resources to help you
- We investigate all quality concerns to ensure our products perform to the highest standards

If the product does not perform as described on this datasheet, we will offer a refund or replacement. For full details of the Abpromise, please visit <https://www.abcam.com/abpromise> or contact our technical team.

Terms and conditions

- Guarantee only valid for products bought direct from Abcam or one of our authorized distributors