

Product datasheet

Recombinant human NEK3 protein ab89758

5 Images

Description

---

<b>Product name</b>	Recombinant human NEK3 protein
<b>Biological activity</b>	The Specific activity of ab89758 was determined to be 132 nmol/min/mg.
<b>Expression system</b>	Baculovirus infected Sf9 cells
<b>Protein length</b>	Full length protein
<b>Animal free</b>	No
<b>Nature</b>	Recombinant
<b>Species</b>	Human

Specifications

---

Our [Abpromise guarantee](#) covers the use of **ab89758** in the following tested applications.

The application notes include recommended starting dilutions; optimal dilutions/concentrations should be determined by the end user.

<b>Applications</b>	SDS-PAGE Western blot Functional Studies
<b>Form</b>	Liquid
<b>Additional notes</b>	<a href="#">ab64311</a> (Myelin Basic Protein protein) can be utilized as a substrate for assessing kinase activity

Preparation and Storage

---

<b>Stability and Storage</b>	Shipped on dry ice. Upon delivery aliquot and store at -80°C. Avoid freeze / thaw cycles. pH: 7.50 Constituents: 0.0038% EGTA, 0.00174% PMSF, 0.00385% DTT, 0.79% Tris HCl, 0.00292% EDTA, 25% Glycerol, 0.87% Sodium chloride This product is an active protein and may elicit a biological response in vivo, handle with caution.
------------------------------	--

General Info

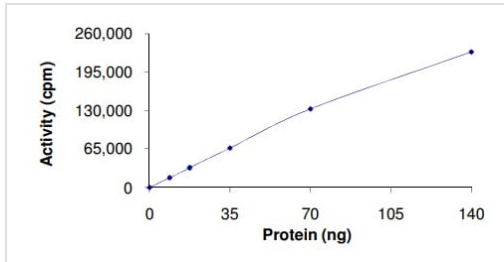
---

<b>Function</b>	Kinase that may play a role in mitotic regulation.
-----------------	--

## Sequence similarities

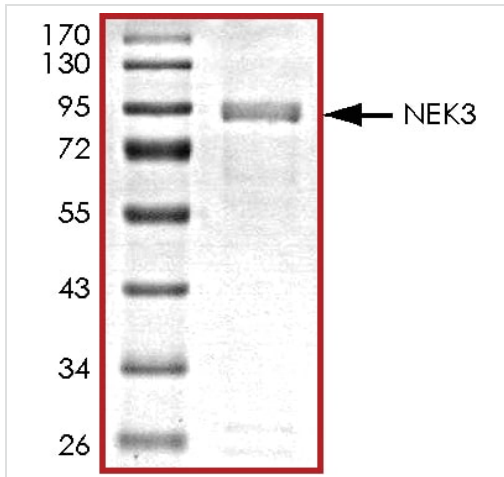
Belongs to the protein kinase superfamily. NEK Ser/Thr protein kinase family. NIMA subfamily.  
Contains 1 protein kinase domain.

## Images



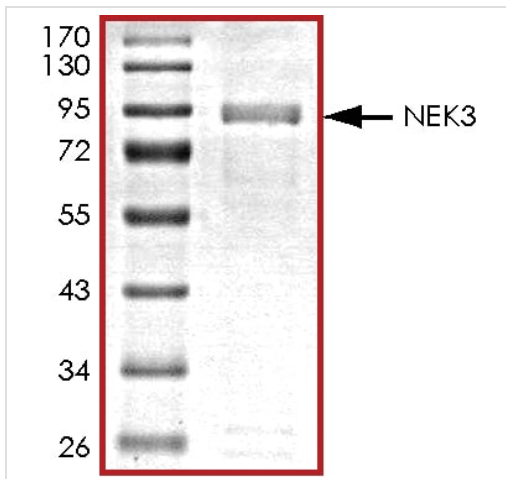
The specific activity of NEK3 (ab89758) was determined to be 112 nmol/min/mg as per activity assay protocol

Functional Studies - Recombinant human NEK3 protein (ab89758)



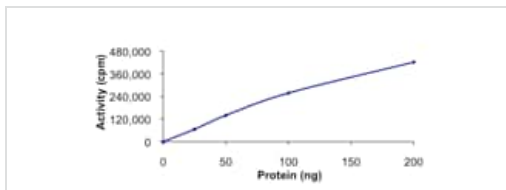
SDS PAGE analysis of ab89758

SDS-PAGE - Recombinant human NEK3 protein (ab89758)



SDS PAGE analysis of ab89758

SDS-PAGE - Recombinant human NEK3 protein (ab89758)



Kinase Assay demonstrating specific activity of ab89758.

Functional Studies - Recombinant human NEK3 protein (ab89758)



SDS-PAGE showing ab89758 at approximately 86kDa.

SDS-PAGE - Recombinant human NEK3 protein (ab89758)

**Please note:** All products are "FOR RESEARCH USE ONLY. NOT FOR USE IN DIAGNOSTIC PROCEDURES"

**Our Abpromise to you: Quality guaranteed and expert technical support**

- Replacement or refund for products not performing as stated on the datasheet
- Valid for 12 months from date of delivery
- Response to your inquiry within 24 hours
- We provide support in Chinese, English, French, German, Japanese and Spanish
- Extensive multi-media technical resources to help you
- We investigate all quality concerns to ensure our products perform to the highest standards

If the product does not perform as described on this datasheet, we will offer a refund or replacement. For full details of the Abpromise, please visit <https://www.abcam.com/abpromise> or contact our technical team.

## Terms and conditions

---

- Guarantee only valid for products bought direct from Abcam or one of our authorized distributors