

Product datasheet

Recombinant Human NETO1 protein ab164366

1 Image

Description

<b>Product name</b>	Recombinant Human NETO1 protein
<b>Expression system</b>	Wheat germ
<b>Protein length</b>	Full length protein
<b>Animal free</b>	No
<b>Nature</b>	Recombinant
<b>Species</b>	Human
<b>Sequence</b>	<p>MIHGRSVLHIVASLILHLHGATKKGTEKQTTSETQKSVQ            CGTWTKHAEG            GIFTSPNYPSKYPPDRECMIEAAPRQCIELYFDEKYSIE            PSWECKFDH            IEVRDGPFGFSPPIGRFCGQQNPPVIKSSGRFLWIKFFA            AGELESMGFS            RYNFTDPDFKDLGALKPLPACEFEMGGSEGIVESIQI            MKEGKATASEAV            DCKWYIRAPPRSKIYLRFLDYEMQNSNECKRNFVAVYD            GSSSVEDLKAKF            CSTVANDVMLRTGLGVIRMWADEGSRNSRFQMLFTS            FQEPPEGNTFFCH            SNMCINNTLVCNGLQNCVYPWDENHCKEKRKTSLLDQ            LTNTSGTVIGVTS            CIVILIIISVIVQIKQPRKKYVQRKSDFDQTVFQEVFEP            YELCTLRG            TGATADFADVADDFENYHKLRRSSSKCIHDHHCQS            SSKGSRNLSTR            DASILTEMPQPGKPLIPPMNRRNILVMKHNYSQDAAD            ACDIDEIEEVPT            TSHRLSRHDKAVQRFCLIGLSLKHSEYNTTRV</p>
<b>Amino acids</b>	1 to 533
<b>Tags</b>	GST tag N-Terminus

Specifications

Our [Abpromise guarantee](#) covers the use of **ab164366** in the following tested applications.

The application notes include recommended starting dilutions; optimal dilutions/concentrations should be determined by the end user.

<b>Applications</b>	Western blot ELISA
<b>Form</b>	Liquid
<b>Additional notes</b>	

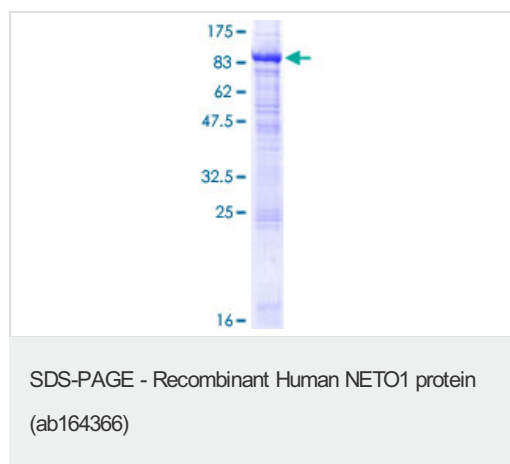
## Preparation and Storage

<b>Stability and Storage</b>	Shipped on dry ice. Upon delivery aliquot and store at -80°C. Avoid freeze / thaw cycles. pH: 8.00 Constituents: 0.31% Glutathione, 0.79% Tris HCl
------------------------------	--

## General Info

<b>Function</b>	Involved in the development and/or maintenance of neuronal circuitry. Accessory subunit of the neuronal N-methyl-D-aspartate receptor (NMDAR) critical for maintaining the abundance of GRIN2A-containing NMDARs in the postsynaptic density. Regulates long-term NMDA receptor-dependent synaptic plasticity and cognition, at least in the context of spatial learning and memory.
<b>Tissue specificity</b>	Isoform 1 and isoform 2 are retina-specific. Isoform 3 is found in retina as well as at lower levels in adult and fetal brain.
<b>Sequence similarities</b>	Contains 2 CUB domains. Contains 1 LDL-receptor class A domain.
<b>Cellular localization</b>	Secreted; Cell membrane and Cell membrane. Cell junction > synapse > postsynaptic cell membrane > postsynaptic density. Component of the postsynaptic density (PSD) of excitatory synapses.

## Images



ab164366 on a 12.5% SDS-PAGE stained with Coomassie Blue.

**Please note:** All products are "FOR RESEARCH USE ONLY. NOT FOR USE IN DIAGNOSTIC PROCEDURES"

## **Our Abpromise to you: Quality guaranteed and expert technical support**

---

- Replacement or refund for products not performing as stated on the datasheet
- Valid for 12 months from date of delivery
- Response to your inquiry within 24 hours
  
- We provide support in Chinese, English, French, German, Japanese and Spanish
- Extensive multi-media technical resources to help you
- We investigate all quality concerns to ensure our products perform to the highest standards

If the product does not perform as described on this datasheet, we will offer a refund or replacement. For full details of the Abpromise, please visit <https://www.abcam.com/abpromise> or contact our technical team.

## **Terms and conditions**

---

- Guarantee only valid for products bought direct from Abcam or one of our authorized distributors