

Product datasheet

Recombinant Human Neurotrypsin protein (Tagged)  
 ab236162

1 Image

Description

<b>Product name</b>	Recombinant Human Neurotrypsin protein (Tagged)	
<b>Purity</b>	> 90 % SDS-PAGE.	
<b>Expression system</b>	Escherichia coli	
<b>Accession</b>	<a href="#">P56730</a>	
<b>Protein length</b>	Protein fragment	
<b>Animal free</b>	No	
<b>Nature</b>	Recombinant	
<b>Species</b>	Human	
<b>Sequence</b>	IIGGKNSLRGGWPWQVSLRLKSSHGDGRLLCGATLLS SCWVLTAAHCFKR YGNSTRSYAVRVGDYHTLVPEEFEEEEIGVQQMIHREYR PDRSDYDIALV RLQGPEEQCARFSSHVLPACLPLWRERPQKTASNCYI TGWGDTGRAYRT LQQAAPLLPKRFCEERYKGRFTGRMLCAGNLHEHKR VDSCQGDSGGPLM CERPGESWVVYGVTSWGYGCGVKDSPGVYTKVSAF VPWIKSVTK	
<b>Predicted molecular weight</b>	43 kDa including tags	
<b>Amino acids</b>	631 to 874	
<b>Tags</b>	His tag N-Terminus	
<b>Additional sequence information</b>	Peptidase S1 domain. N-terminal 6xHis-SUMO-tag.	

Specifications

Our [Abpromise guarantee](#) covers the use of **ab236162** in the following tested applications.

The application notes include recommended starting dilutions; optimal dilutions/concentrations should be determined by the end user.

**Applications** SDS-PAGE

**Form** Liquid

## Preparation and Storage

---

### Stability and Storage

Shipped at 4°C. Store at -20°C or -80°C. Avoid freeze / thaw cycle.

Constituents: Tris buffer, 50% Glycerol

## General Info

---

### Function

Plays a role in neuronal plasticity and the proteolytic action may subserve structural reorganizations associated with learning and memory operations.

### Tissue specificity

Brain and Leydig cells of the testis.

### Involvement in disease

Defects in PRSS12 are the cause of mental retardation autosomal recessive type 1 (MRT1) [MIM:249500]. Mental retardation is a mental disorder characterized by significantly sub-average general intellectual functioning associated with impairments in adaptive behavior and manifested during the developmental period. Non-syndromic mental retardation patients do not manifest other clinical signs.

### Sequence similarities

Belongs to the peptidase S1 family.

Contains 1 kringle domain.

Contains 1 peptidase S1 domain.

Contains 4 SRCR domains.

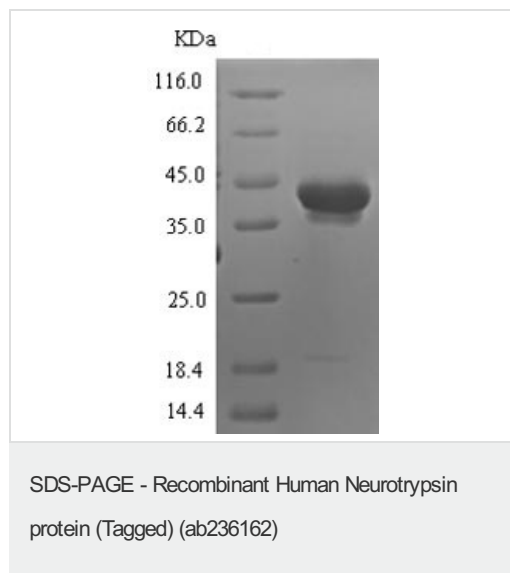
### Cellular localization

Secreted.

---

## Images

---



(Tris-Glycine gel) Discontinuous SDS-PAGE (reduced) analysis with 5% enrichment gel and 15% separation gel analysis of ab236162.

**Please note:** All products are "FOR RESEARCH USE ONLY. NOT FOR USE IN DIAGNOSTIC PROCEDURES"

## Our Promise to you: Quality guaranteed and expert technical support

---

- Replacement or refund for products not performing as stated on the datasheet
- Valid for 12 months from date of delivery

- Response to your inquiry within 24 hours
- We provide support in Chinese, English, French, German, Japanese and Spanish
- Extensive multi-media technical resources to help you
- We investigate all quality concerns to ensure our products perform to the highest standards

If the product does not perform as described on this datasheet, we will offer a refund or replacement. For full details of the Abpromise, please visit <https://www.abcam.com/abpromise> or contact our technical team.

### **Terms and conditions**

---

- Guarantee only valid for products bought direct from Abcam or one of our authorized distributors