

Product datasheet

Recombinant Human NHSL2 protein ab166281

1 Image

Description

Product name	Recombinant Human NHSL2 protein
Expression system	Wheat germ
Protein length	Full length protein
Animal free	No
Nature	Recombinant
Species	Human

Sequence

MESMGMVYVSPSSCNGPTESTFSTSWKGDAFTYMTP
 SATSQSNQVNENGGK
 NPSCGNSWVSLNKVPPLVPKEAATLLVARDNPAGCS
 GSAGYPERLIQQRH
 MPERPSKIGLLTSGTSRLETGPGGASRFRRERSLSVPT
 DSGTTDVDYDEEQ
 KANEACALPFASTSSEGSNSADNIASLSAQQEAQHRR
 QRSKISLRKAKK
 KPSPPTRSVSLVKDEPGLLPEGGSALPKDQRPKSLCL
 SLEHQGHSSHPD
 AQGHPAIPNHKDPESTQFSHHWYLDWKSGDITYQSL
 SSSTATGTTVIEC
 TQVQGSSSESLASPSTSRATTPSQLSIEVEAREISSPGR
 PPGLMSPSSGYS
 SQSETPTPTVSMSTLGHLPSSSVRVRPVVPERKS
 SLPPTSPMEKFPK
 SRLSFDLPLTSSPNLDLSGMSISIRSKTKVSRHHSETNF
 GVKLAQKTNP
 QPIMPMVTQSDLRSVRLRSVSKSEPEDDIESPEYAE
 PRAEEVFTLPERK
 TKPPVAEKPPVARRPPSLVHKPPSVPEEYALTSP
 TLA
 MPPRSSIQHARPL
 PQDSYTVVRKPKPSSFPDGRSPGESTAPSSLVFT
 PFA
 SSSDAFFSGTQQP
 PQGSVEDEGPKVRVLPERISLQSQEEAEKKK
 GKIPPP
 VPKKPSVLYLPLT
 SPTAQMEAYVAEPRLPLSPIITLEEDTKCPAT
 GDDLQS
 LGQRVTSTPQAD SEREASPLG

Amino acids	1 to 709
Tags	GST tag N-Terminus

Specifications

Our [Abpromise guarantee](#) covers the use of **ab166281** in the following tested applications.

The application notes include recommended starting dilutions; optimal dilutions/concentrations should be determined by the end user.

Applications	ELISA Western blot
Form	Liquid

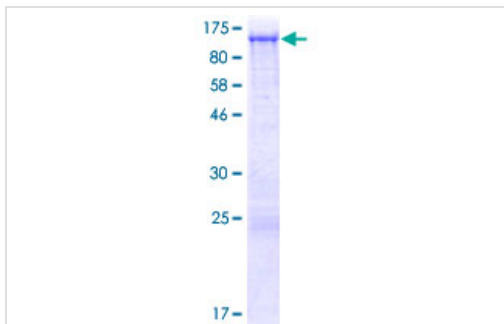
Additional notes

Preparation and Storage

Stability and Storage	Shipped on dry ice. Upon delivery aliquot and store at -80°C. Avoid freeze / thaw cycles. pH: 8.00 Constituents: 0.31% Glutathione, 0.79% Tris HCl
------------------------------	--

General Info

Images



ab166281 on a 12.5% SDS-PAGE stained with Coomassie Blue.

SDS-PAGE - Recombinant Human NHSL2 protein
(ab166281)

Please note: All products are "FOR RESEARCH USE ONLY. NOT FOR USE IN DIAGNOSTIC PROCEDURES"

Our Promise to you: Quality guaranteed and expert technical support

- Replacement or refund for products not performing as stated on the datasheet
- Valid for 12 months from date of delivery

- Response to your inquiry within 24 hours
- We provide support in Chinese, English, French, German, Japanese and Spanish
- Extensive multi-media technical resources to help you
- We investigate all quality concerns to ensure our products perform to the highest standards

If the product does not perform as described on this datasheet, we will offer a refund or replacement. For full details of the Abpromise, please visit <https://www.abcam.com/abpromise> or contact our technical team.

Terms and conditions

- Guarantee only valid for products bought direct from Abcam or one of our authorized distributors