

Product datasheet

Recombinant Human NMUR1 protein ab160942

1 Image

Description

Product name	Recombinant Human NMUR1 protein	
Expression system	Wheat germ	
Protein length	Full length protein	
Animal free	No	
Nature	Recombinant	
Species	Human	
Sequence	MTPCLCNCSVLPGDLYPGGARNPMACNGSAARGHFD PEDLNLTDEALRLK YLG PQQTELFMPICATYLLIFVVGAVGNGLTCLVILRHKA MRTPTNYL F SLAVSDLLVLLVGLPLELYEMWHNYPFL LGVGGCYFRT LLFEMVCLASVL NVTALSVERYVAVVHPLQARSMVTRAHVRRVLGAVW GLAMLCSLPNTSLH GIQQLHVPCRGPVPDSAVCMLVRPRALYNM VVQTAL LFFCLPMAIMSVL YLLIGLRLRRERLLL MQEAKGRGSAAARSRYTCRLQQH DRGRRQVTKMLF VLVVVFGICWAPFHADRVMWSVVSQWTDGLHLAFQH VHVISGIFFYL GSA ANPVL YSLMSSRFRETFQEALCLGACCHRLRPRHSSH SLSRMTTGSTLCD VGSLGSWWHPLAGNDGPEAQQETDPS	
Amino acids	1 to 426	
Tags	GST tag N-Terminus	

Specifications

Our [Abpromise guarantee](#) covers the use of **ab160942** in the following tested applications. The application notes include recommended starting dilutions; optimal dilutions/concentrations should be determined by the end user.

Applications	ELISA
	Western blot

Form	Liquid
Additional notes	Protein concentration is above or equal to 0.05 mg/ml.

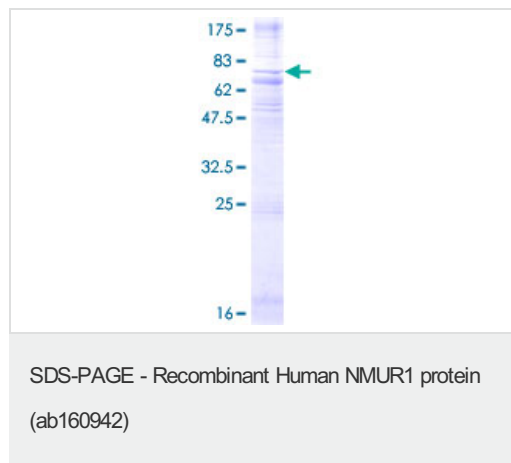
Preparation and Storage

Stability and Storage	Shipped on dry ice. Upon delivery aliquot and store at -80°C. Avoid freeze / thaw cycles. pH: 8.00 Constituents: 0.31% Glutathione, 0.79% Tris HCl
------------------------------	--

General Info

Function	Receptor for the neuromedin-U and neuromedin-S neuropeptides.
Tissue specificity	Expressed in greatest abundance in peripheral organs, particularly in elements of the gastrointestinal and urogenital systems with highest levels in testes. In central nervous system structures express levels are much lower than those seen in peripheral organs. Within the CNS, has been detected in highest abundance in the cerebellum, dorsal root ganglia, hippocampus, and spinal cord.
Sequence similarities	Belongs to the G-protein coupled receptor 1 family.
Cellular localization	Cell membrane.

Images



ab160942 on a 12.5% SDS-PAGE stained with Coomassie Blue.

Please note: All products are "FOR RESEARCH USE ONLY. NOT FOR USE IN DIAGNOSTIC PROCEDURES"

Our Abpromise to you: Quality guaranteed and expert technical support

- Replacement or refund for products not performing as stated on the datasheet
- Valid for 12 months from date of delivery
- Response to your inquiry within 24 hours
- We provide support in Chinese, English, French, German, Japanese and Spanish
- Extensive multi-media technical resources to help you

- We investigate all quality concerns to ensure our products perform to the highest standards

If the product does not perform as described on this datasheet, we will offer a refund or replacement. For full details of the Abpromise, please visit <https://www.abcam.com/abpromise> or contact our technical team.

Terms and conditions

- Guarantee only valid for products bought direct from Abcam or one of our authorized distributors