

Product datasheet

Recombinant Human NOR1/TEC protein ab152835

[1 Image](#)

Overview

Product name	Recombinant Human NOR1/TEC protein
Protein length	Protein fragment

Description

Nature	Recombinant
Source	Wheat germ
Amino Acid Sequence	
Accession	Q92570
Species	Human
Sequence	LDYSRYCPTDQAAAGTDAEHVQQFYNLLTASIDVSRS WAEKIPGFSDLPK EDQTLIESAFLELFVLRSLRSNTAEDKFVFCNGLVLH RLQCLRGFGWEW LDSIKDFS
Molecular weight	38 kDa including tags
Amino acids	414 to 521

Specifications

Our [Abpromise guarantee](#) covers the use of **ab152835** in the following tested applications.

The application notes include recommended starting dilutions; optimal dilutions/concentrations should be determined by the end user.

Applications	ELISA Western blot SDS-PAGE
Form	Liquid
Additional notes	Protein concentration is above or equal to 0.05 µg/µl. This product was previously labelled as NOR1

Preparation and Storage

Stability and Storage

Shipped on dry ice. Upon delivery aliquot and store at -80°C. Avoid freeze / thaw cycles.

pH: 8.00

Constituents: 0.31% Glutathione, 0.79% Tris HCl

General Info

Function

Binds to the B1A response-element.

Tissue specificity

Isoform alpha is highly expressed in skeletal muscle. Isoform beta is highly expressed in skeletal muscle and low expressed in fetal brain and placenta.

Involvement in disease

Defects in NR4A3 are a cause of Ewing sarcoma (ES) [MIM:612219]. A highly malignant, metastatic, primitive small round cell tumor of bone and soft tissue that affects children and adolescents. It belongs to the Ewing sarcoma family of tumors, a group of morphologically heterogeneous neoplasms that share the same cytogenetic features. They are considered neural tumors derived from cells of the neural crest. Ewing sarcoma represents the less differentiated form of the tumors. Note=A chromosomal aberration involving NR4A3 is found in patients with Erwing sarcoma. Translocation t(9;22)(q22-31;q11-12) with EWSR1.

Note=A chromosomal aberration involving NR4A3 is a cause of a form of extraskeletal myxoid chondrosarcomas (EMC). Translocation t(9;17)(q22;q11) with TAF2N.

Sequence similarities

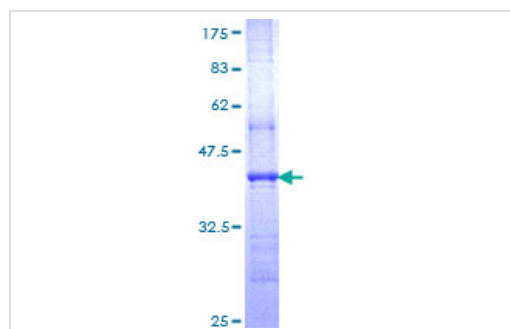
Belongs to the nuclear hormone receptor family. NR4 subfamily.

Contains 1 nuclear receptor DNA-binding domain.

Cellular localization

Nucleus.

Images



12.5% SDS-PAGE analysis of ab152835 stained with Coomassie Blue.

SDS-PAGE - Recombinant Human NOR1/TEC protein (ab152835)

Please note: All products are "FOR RESEARCH USE ONLY. NOT FOR USE IN DIAGNOSTIC PROCEDURES"

Our Abpromise to you: Quality guaranteed and expert technical support

- Replacement or refund for products not performing as stated on the datasheet
- Valid for 12 months from date of delivery
- Response to your inquiry within 24 hours

- We provide support in Chinese, English, French, German, Japanese and Spanish
- Extensive multi-media technical resources to help you
- We investigate all quality concerns to ensure our products perform to the highest standards

If the product does not perform as described on this datasheet, we will offer a refund or replacement. For full details of the Abpromise, please visit <https://www.abcam.com/abpromise> or contact our technical team.

Terms and conditions

- Guarantee only valid for products bought direct from Abcam or one of our authorized distributors