

Product datasheet

Recombinant Human Norbin protein ab161548

1 References 1 Image

Description

Product name	Recombinant Human Norbin protein
Expression system	Wheat germ
Protein length	Full length protein
Animal free	No
Nature	Recombinant
Species	Human

Sequence

```

MSCCDLAAAGQLGKASIMASDCEPALNQAEGRNPTLERY
LGALREAKNDS
EQFAALLLVTKAVKAGDIDAKTRRRIFDAVGFTFPNRLTT
KEAPDGCPD
HVLRALGVALLACFCSDPELAAHPQVLNKIPILSTFLTARG
DPDDAARRS
MIDDTYQCLTAVAGTPRGPRHLIAGGTVSALCQAYLGHY
GFDQALALLV
GLLAAAETQCWKEAEPDLLAVLRGLSEDFQKAEDASKFE
LCQLLPLFLPP
TTPPECYRDLQAGLARILGSKLSSWQRNPALKLAARLAH
ACGSDWIPAG
SSGSKFLALLVNLACVEVRLALEETGTEVKEDVVTACYAL
MELGIQECTR
CEQSLLKEPQKVQLVSVMKEAIGAVIHLLQVGSEKQKEP
FVFASVRILG
AWLAEETSSLRKEVCQLLPFLVRYAKTLYEEAEEANDLSQ
QVANLAISPT
TPGPTWPGDALRLLLPGWCHLTVEDGPREILIKEGAPSL
CKYFLQQWEL
TSPGHDTSVLPDSVEIGLQTCCHIFLNLVVTAPGLIKRDAC
FTSLMNTLM
TSLPALVQQQGRLLLAANVATLGLLMARLLSTSPALQGTP
ASRGFFAAAI
LFLSQSHVARATPGSDQAVLALSPEYEGWADLQELWFL
GMAFTGCVPL
LPWLAPAALRSRWPQELLQLLGSVSPNSVKPEMVAAYQ
GVLVELARANRL
CREAMRLQAGEETASHYRMAALEQCLSEP
    
```

Amino acids	1 to 729
Tags	GST tag N-Terminus

Specifications

Our [Abpromise guarantee](#) covers the use of **ab161548** in the following tested applications.

The application notes include recommended starting dilutions; optimal dilutions/concentrations should be determined by the end user.

Applications	Western blot ELISA
Form	Liquid

Additional notes

Preparation and Storage

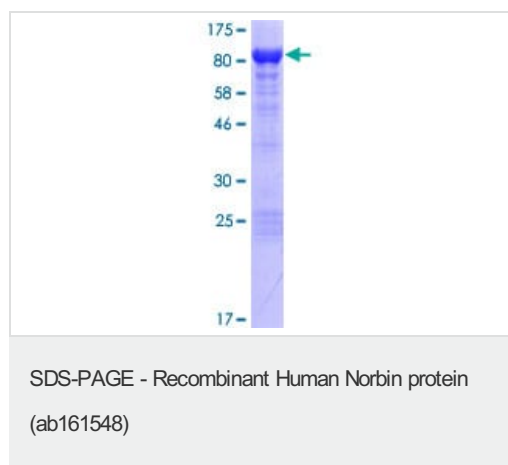
Stability and Storage	Shipped on dry ice. Upon delivery aliquot and store at -80°C. Avoid freeze / thaw cycles. pH: 8.00 Constituents: 0.31% Glutathione, 0.79% Tris HCl
------------------------------	--

General Info

Relevance	Neurochondrin is a leucine rich cytoplasmic protein, which is highly similar to a mouse protein that negatively regulates Ca/calmodulin dependent protein kinase II phosphorylation and may be essential for spatial learning processes.
------------------	--

Cellular localization	Cytoplasm. Cell projection, dendrite. Note: Localizes to somatic regions of neurons.
------------------------------	--

Images



ab161548 on a 12.5% SDS-PAGE stained with Coomassie Blue.

Please note: All products are "FOR RESEARCH USE ONLY. NOT FOR USE IN DIAGNOSTIC PROCEDURES"

Our Abpromise to you: Quality guaranteed and expert technical support

- Replacement or refund for products not performing as stated on the datasheet
- Valid for 12 months from date of delivery
- Response to your inquiry within 24 hours

- We provide support in Chinese, English, French, German, Japanese and Spanish
- Extensive multi-media technical resources to help you
- We investigate all quality concerns to ensure our products perform to the highest standards

If the product does not perform as described on this datasheet, we will offer a refund or replacement. For full details of the Abpromise, please visit <https://www.abcam.com/abpromise> or contact our technical team.

Terms and conditions

- Guarantee only valid for products bought direct from Abcam or one of our authorized distributors